

Off Leash Dog Park

May 16, 2019 Park Board Meeting

History

- February 1995: Dog Beach at Centennial Park Opened
- August 2006: Board Consideration of Dog Park (Off-Beach)
 - Centennial, Crow Island Woods & Lloyd
 - Meetings Reflected Non – Support from the Community
- 2014: LFMP Plan proposal for Maple Park as a potential Dog Park
 - Strongly opposed and was tabled at the time to be reviewed later
- December 2018: Staff are evaluating a similar request

Request



- December 2018 Park Board Meeting
- Dog Park resident group advocated for Off Leash Dog Park
- Staff Directed to research options & opportunities
- Initial results indicate the following

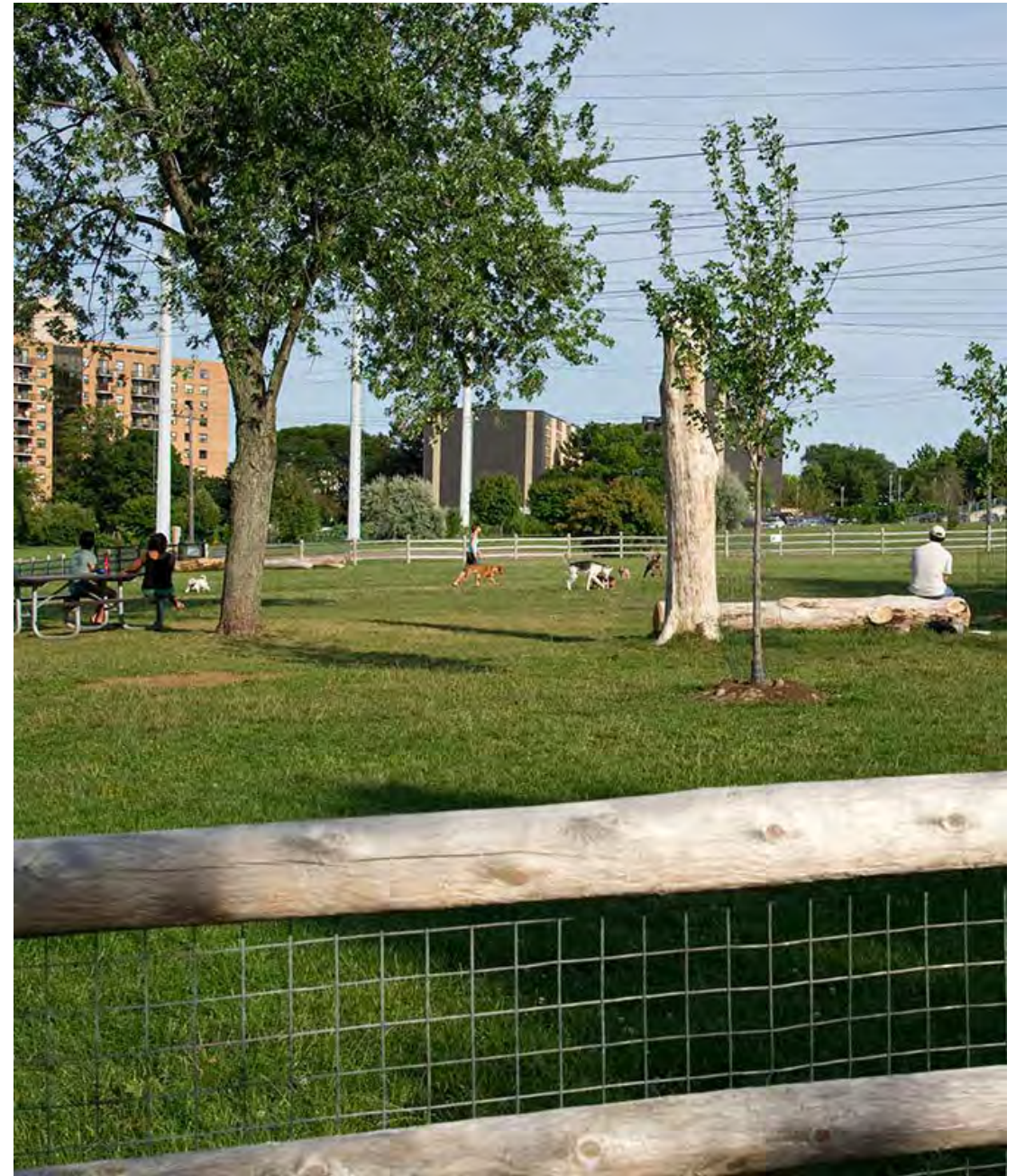
Communication & Research

Stakeholder Group & Research	Reviewed
Dog Owners	<ul style="list-style-type: none">• Several Meetings over the past few months• Reviewed the needs and amenities on locations and suggestions• What makes a desirable dog park
Village of Winnetka	<ul style="list-style-type: none">• Base concept, expectations and concerns• Reviewed possible locations with in the Village Boundaries
Cook County Forest Preserve	<ul style="list-style-type: none">• Discussed possible locations (Erickson Woods, Skokie Lagoons, Etc.)
Northfield & Glencoe Park District	<ul style="list-style-type: none">• Possible Partnership or collaboration on a shared site• Staff attendance at Glencoe Dog Park Open House & Board Meetings
Site Visits	<ul style="list-style-type: none">• Visited 10 North Suburban Dog Parks

Off Leash Dog Park

Base Criteria

- Size between 1 and 2 acres (less space can be used)
- 4' high fencing with double entry gates
- Signage (rules and regulations)
- Key card access system
- Pathways (crushed stone or wood fiber)
- Shade Trees
- Site Furnishings (benches, picnic tables, waste receptacles, dog bag dispensers, etc.)
- No playground on project site (adjacent would need to be reviewed)
- No school on project site (adjacent would need to be reviewed)
- Maintained natural grass areas
- Minimal impact to adjacent residents
- 10 parking spaces (minimum; off-street preferred)
- ADA Accessibility





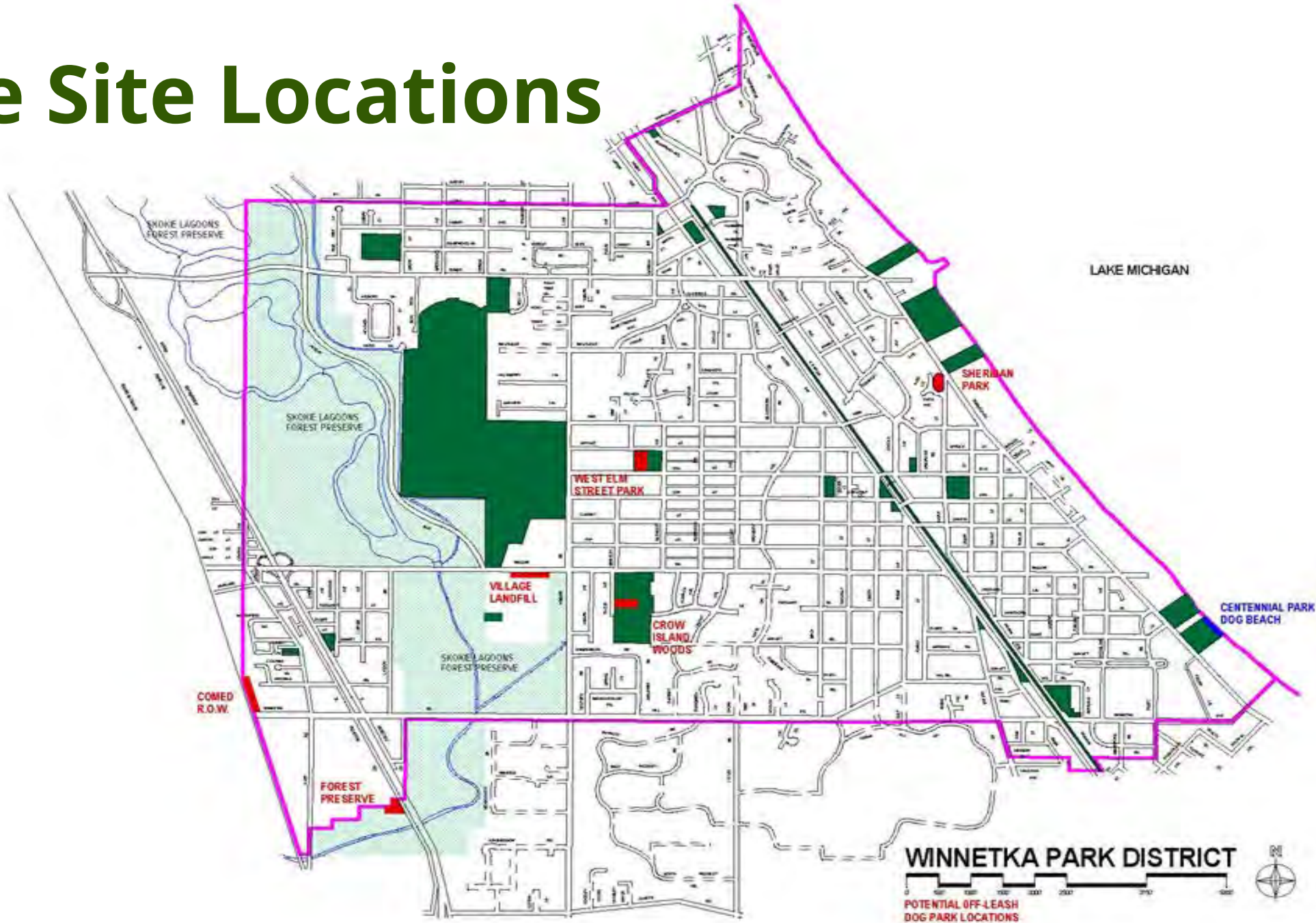
Off Leash Dog Park

Potential Amenities

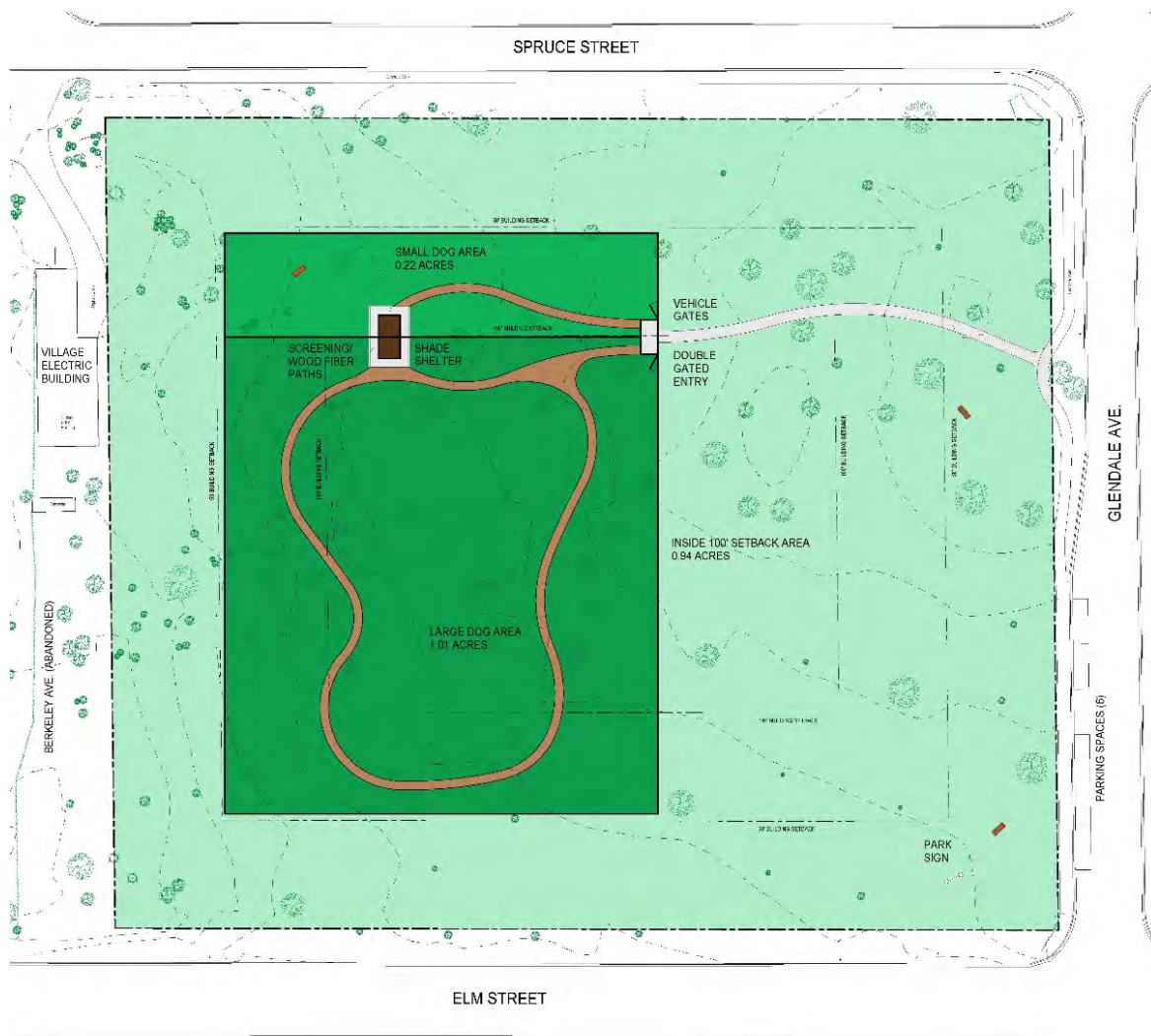
Future Phasing

- Drinking fountain (with dog dishes)
- Shade structure/shelter (fabric, metal, wood, TBD)
- Separate small dog area (separate entry gate)
- Dog shower area (to rinse paws)
- Exercise or agility equipment
- Donation Recognition

Possible Site Locations

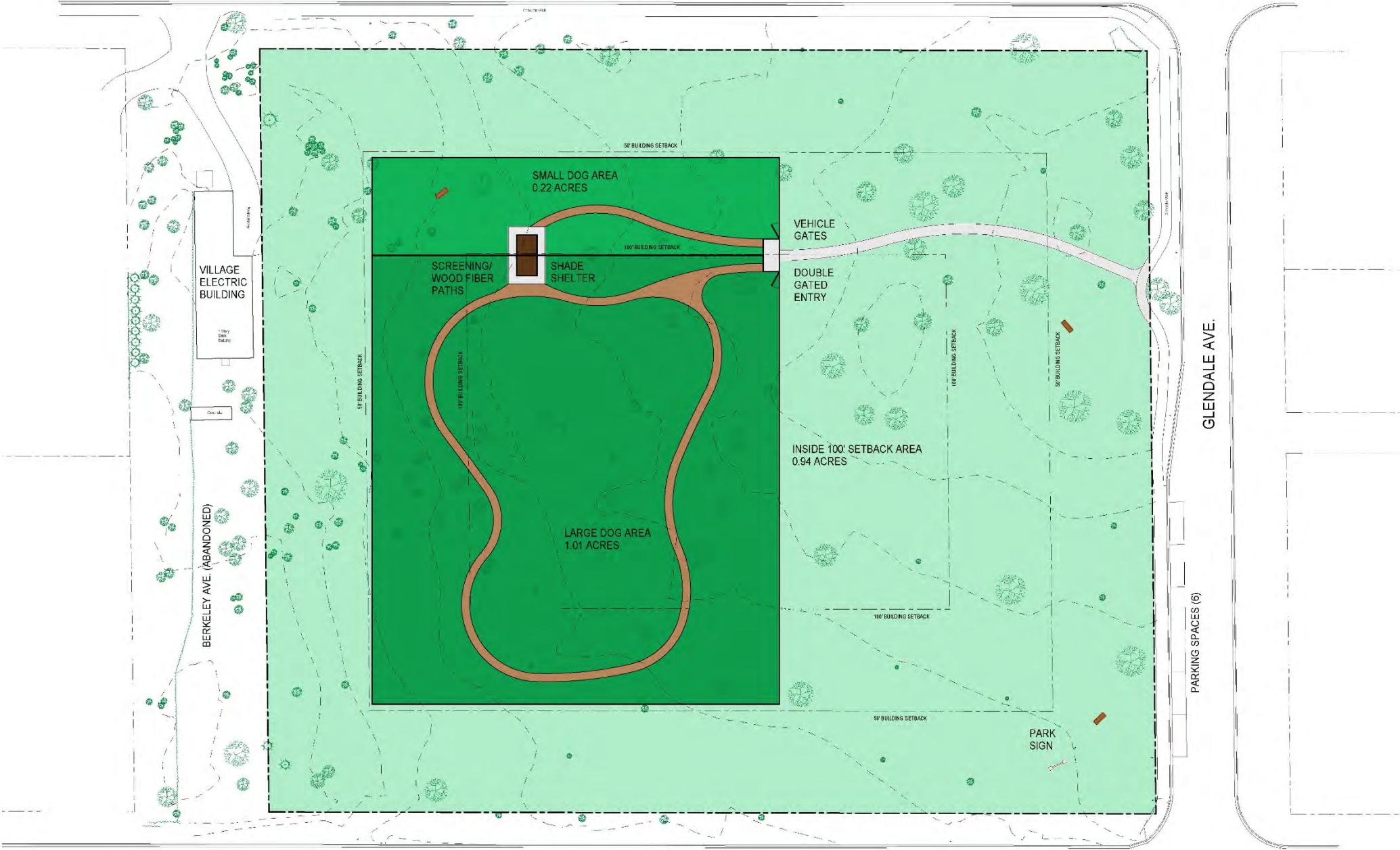


West Elm Street Park



- Property size 3.74 acres
- Proposed Dog Park 1.23 Acres
- Potential Concerns
 - Proximity to neighbors
 - Topography (some drainage issues)
 - Mature tree canopy
 - Limited to On-Street Parking (currently)
- Estimated Budget
 - \$100,000 - \$125,000

SPRUCE STREET



ELM STREET

GLENDAL AVE.

PARKING SPACES (6)

Off Leash Dog Park

West Elm Street Park



Looking Northwest



Looking Southwest



Looking Northeast



Looking Southeast

Crow Island Woods



- Property size 17.91 acres
- Proposed Dog Park 1.1 Acres
- Potential Concerns
 - Proximity to neighbors/School
 - Amount of Rentals and mixed usage
 - Topography (some drainage issues)
 - Mature tree canopy
 - Limited to On-Street Parking (currently)
 - Redirection of our current Restoration Plan
- Estimated Budget
 - \$100,000 - \$125,000



Off Leash Dog Park

Crow Island Woods



Looking Southwest



Looking Southeast



Looking Northwest

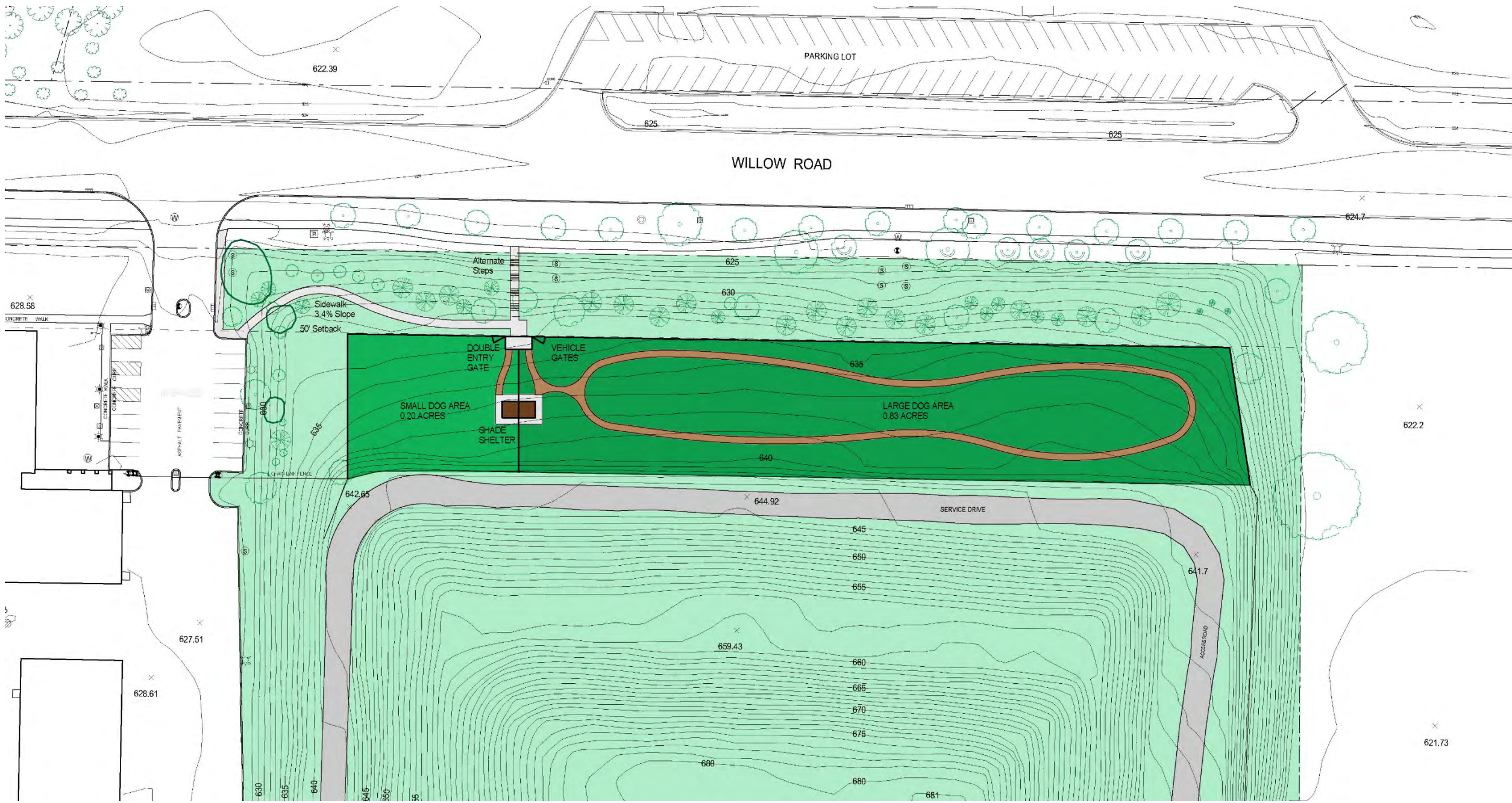


Looking Northeast

Village Landfill



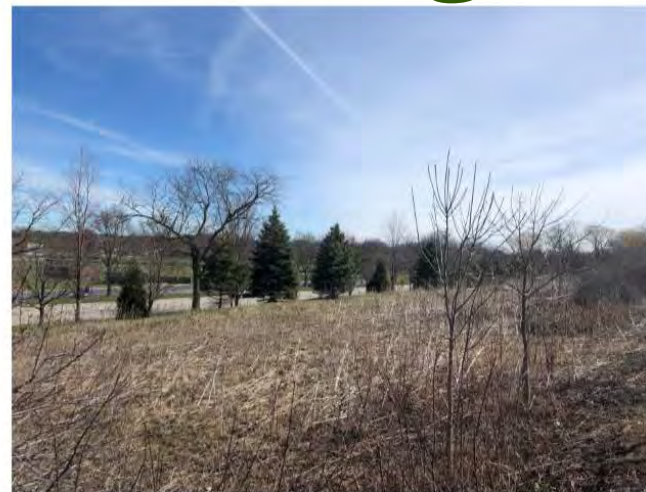
- Proposed Dog Park 1.03 Acres
- Potential Concerns
 - Topography (Clearing needed)
 - Limited Parking (currently shared use of Village Visitor Parking)
- Owned by Village of Winnetka
- Estimated Budget
 - \$100,000 - \$125,000



Village Landfill



Looking Southeast



Looking Northeast



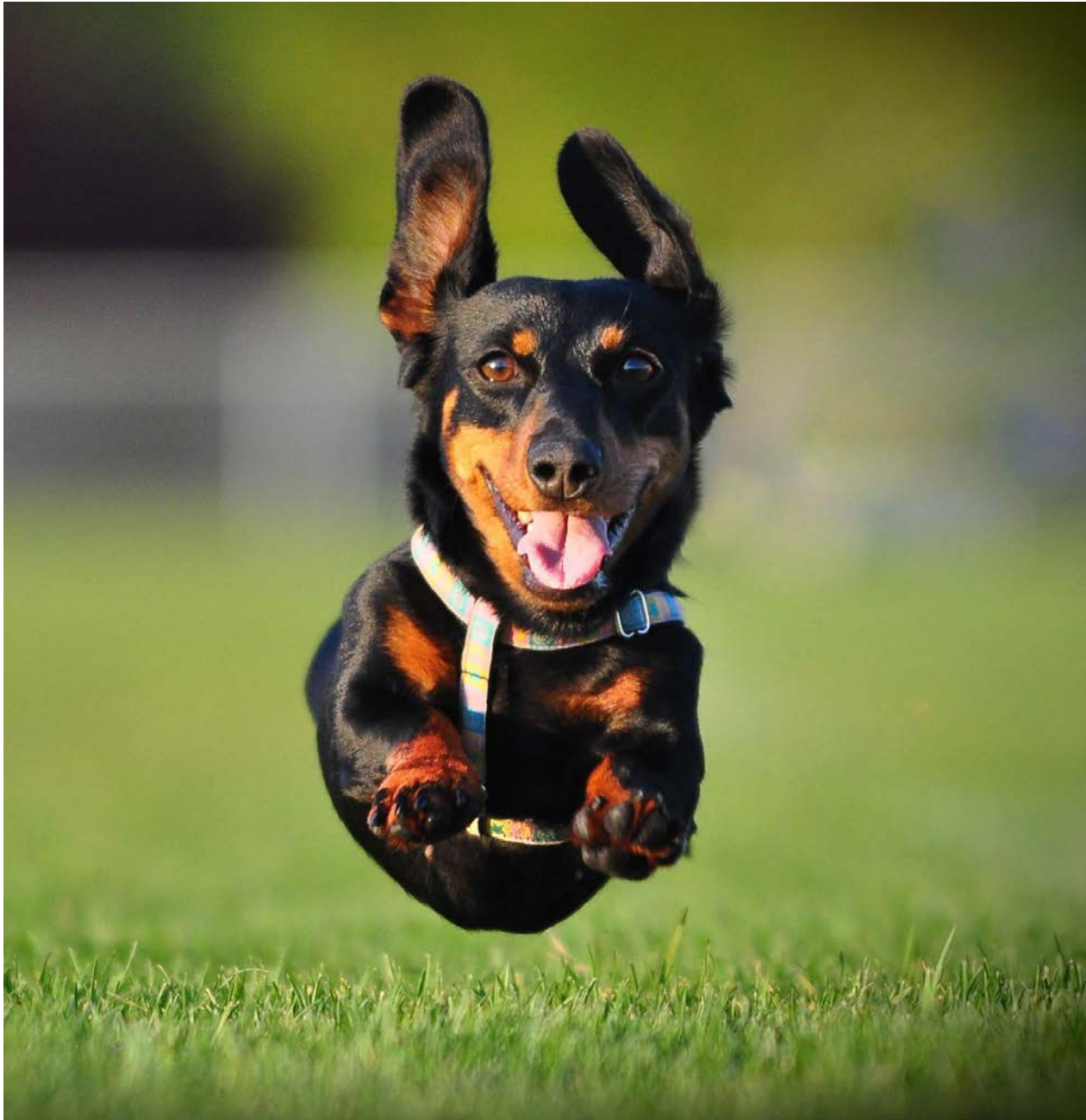
Looking Southwest



Looking Northwest

Next Steps

- Identify Top Locations.....
 - Park District Board Review/Workshop
 - Stakeholder Engagement (top sites)
 - Operations Planning
 - Maintenance Plan
 - Budget (Cost Estimate)
 - Fee Structure
- Revisit with the Park Board
- Village Permit Process
- Timeline



Questions