

# Off Leash Dog Park

March 21<sup>st</sup> Park Board Meeting



# Request



- December 13<sup>th</sup> 2018 Park Board Meeting
- Dog Park resident group advocated for Off Leash Dog Park
- Staff Directed to research options & opportunities
- Initial results indicate the following

# History

- February 1995: Dog Beach at Centennial Park Opened
- August 2006: Board Consideration of Dog Park (Off-Beach)
  - Centennial, Crow Island Woods & Lloyd
  - Meetings Reflected Non – Support from the Community
- 2014: LFMP Plan proposal for Maple Park as a potential Dog Park
  - Strongly opposed and was tabled at the time to be reviewed later
- December 2018: Staff are evaluating a similar request

# Communication & Research

Stakeholder Group & Research	Reviewed
Dog Owners	<ul style="list-style-type: none"><li>• Several Meetings, including this past week</li><li>• Reviewed the needs and amenities on locations and suggestions</li><li>• What makes a desirable dog park</li></ul>
Village of Winnetka	<ul style="list-style-type: none"><li>• Base concept, expectations and concerns</li><li>• Reviewed possible locations with in the Village Boundaries</li></ul>
Cook County Forest Preserve	<ul style="list-style-type: none"><li>• Discussed possible locations (Erickson Woods, Skokie Lagoons, Etc.)</li></ul>
Northfield & Glencoe Park District	<ul style="list-style-type: none"><li>• Possible Partnership or collaboration on a shared site</li><li>• Staff attendance at Glencoe Dog Park Open House</li></ul>
Site Visits	<ul style="list-style-type: none"><li>• Visited 10 North Suburban Dog Parks</li></ul>



Off Leash Dog Park

# Local Dog Parks



## Northbrook

Coast Guard Dog Park  
4.39 acres

## Deerfield

Jaycee Dog Park  
0.9 acres

## Glenview

Community Bark West  
Dog Park  
6 acres

## Lake Forest

Prairie Wolf Dog Park  
44 acres

# Top Three Takeaways from Site Visits

**1**

**Double Entry Gates and Fencing**

**2**

**Site Amenities (shade structures,  
benches/picnic tables, water features)**

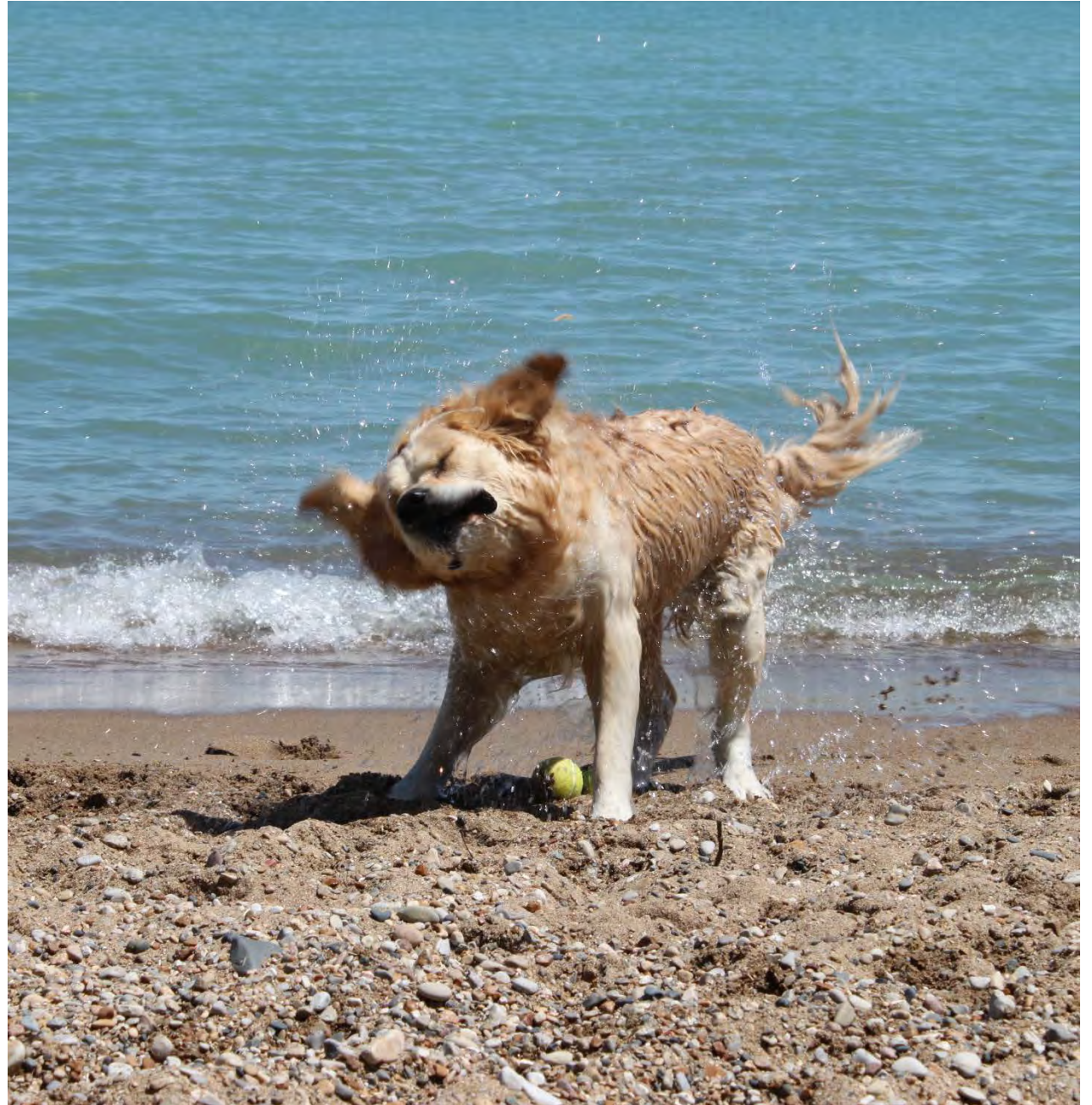
**3**

**Parking adjacent or close by**

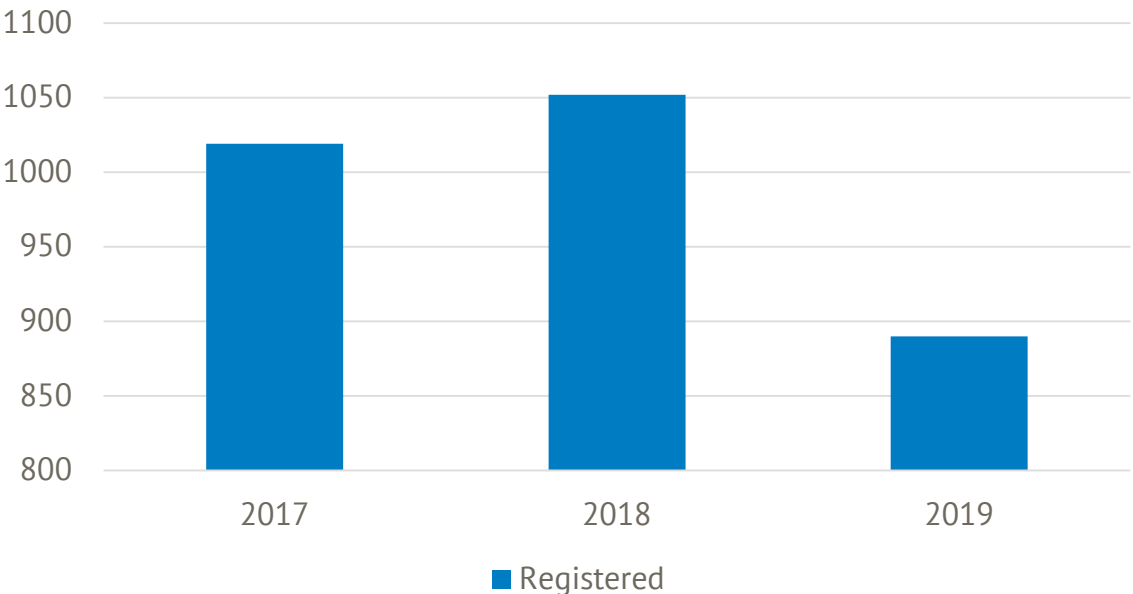
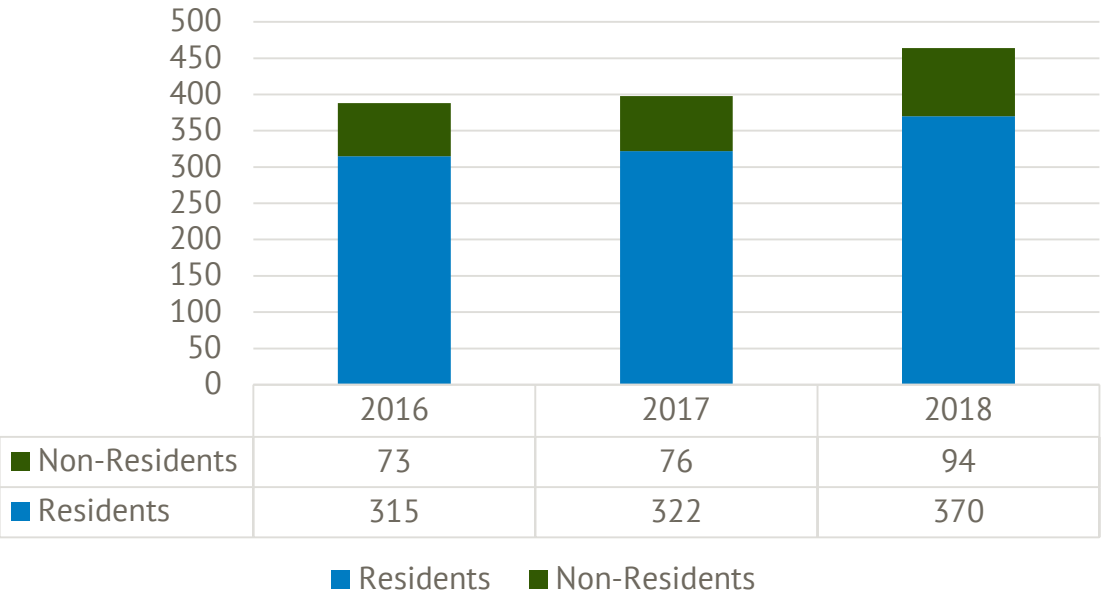


# Current Use

- Centennial Park Dog Beach
  - 2018: Resident 370, Non-Resident 94
  - 2017: Resident 322, Non-Resident 76
  - 2016: Resident 315, Non-Resident 73
- Dogs Registered in the Village
  - 2019: To date 890+
  - 2018: 1052
  - 2017: 1019
  - Typically average between 980-1100



# Current Use



WPD Dog Passes Cent.

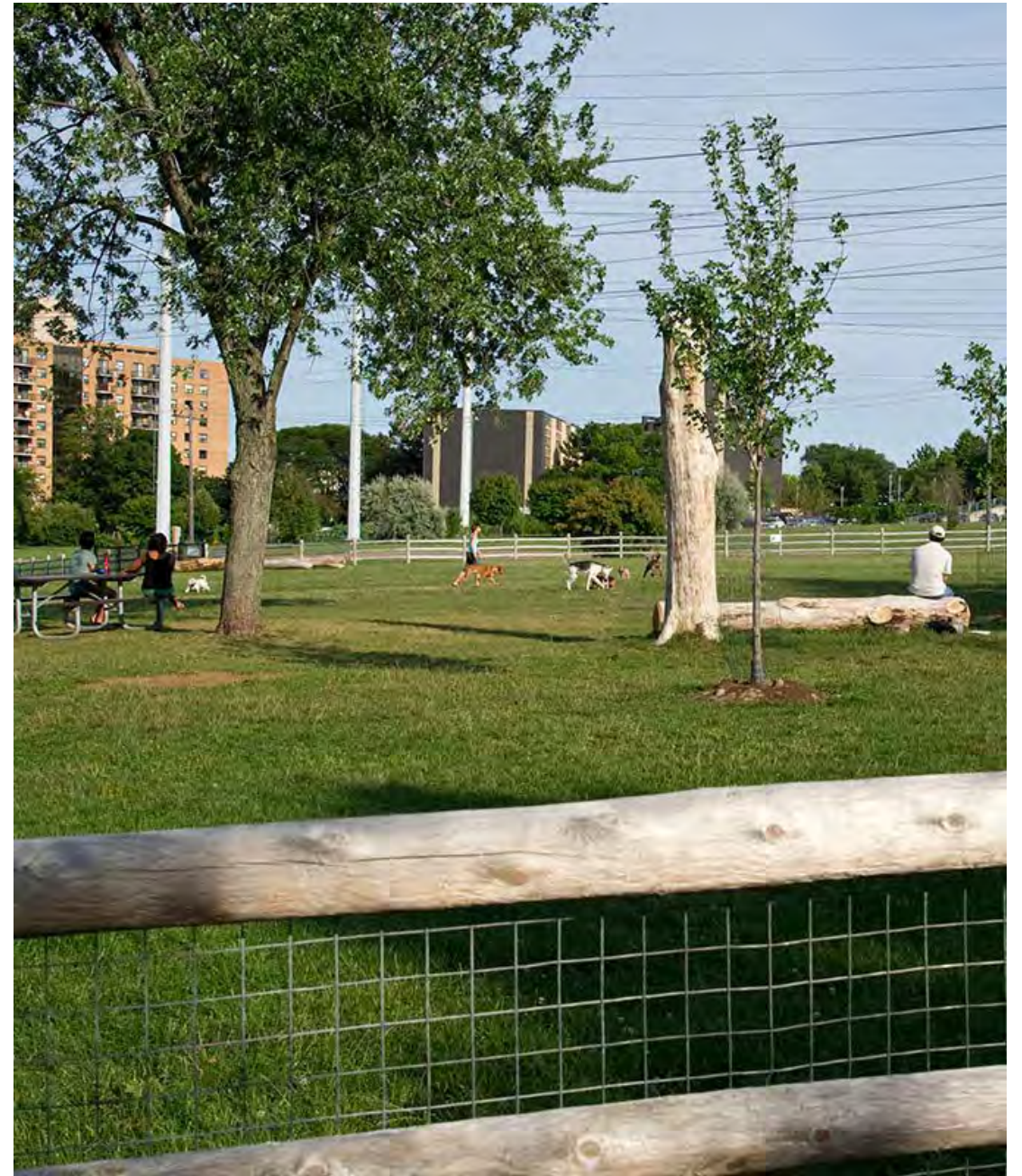
Registered Dogs Winnetka



## Off Leash Dog Park

# Base Criteria

- Size between 1 and 2 acres (less space can be used)
- 4' high fencing with double entry gates
- Signage (rules and regulations)
- Key card access system
- Pathways (crushed stone or wood fiber)
- Shade Trees
- Site Furnishings (benches, picnic tables, waste receptacles, dog bag dispensers, etc.)
- No playground on project site (adjacent would need to be reviewed)
- No school on project site (adjacent would need to be reviewed)
- Maintained natural grass areas
- Minimal impact to adjacent residents
- 10 parking spaces (minimum; off-street preferred)
- ADA Accessibility







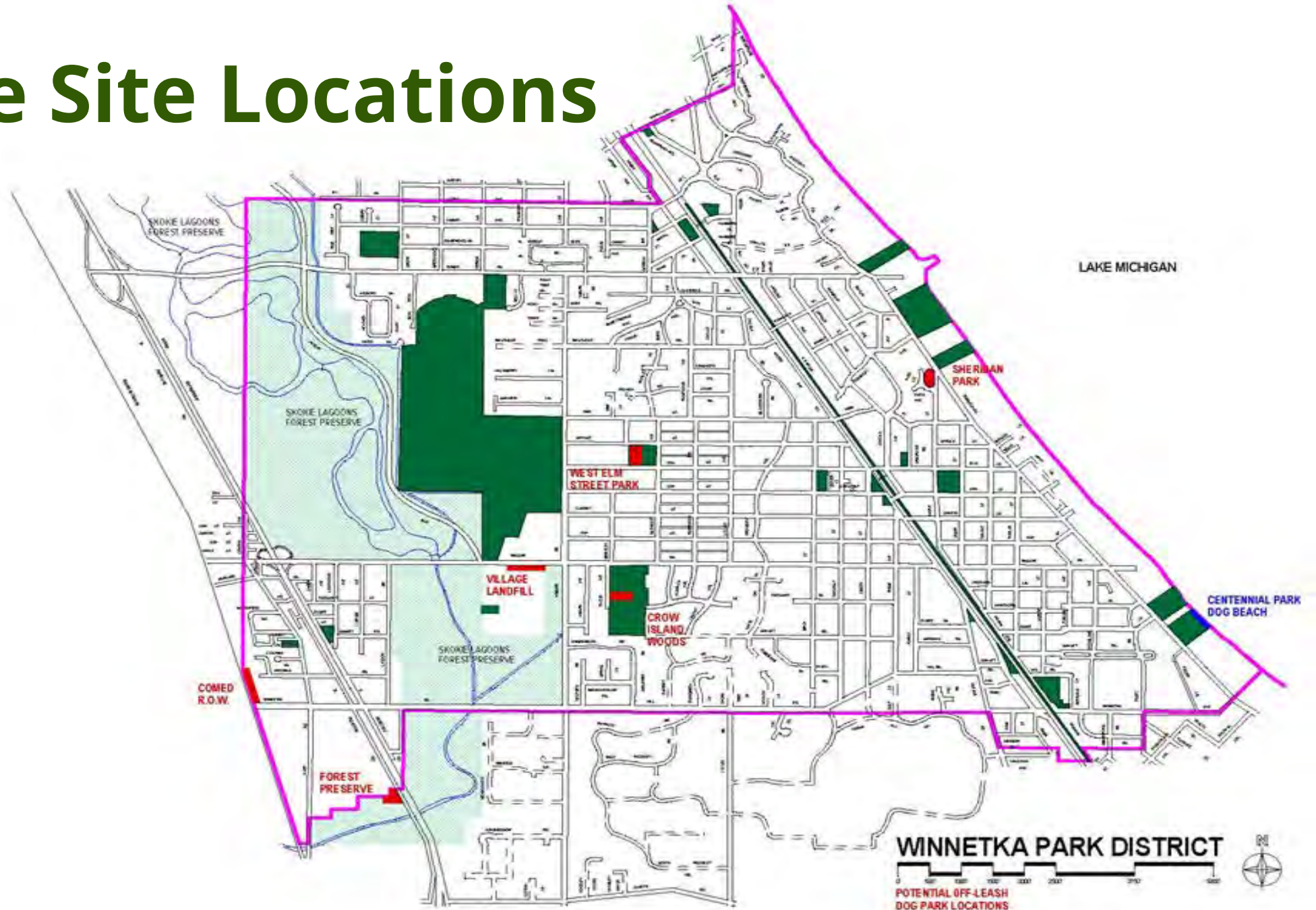
Off Leash Dog Park

# Potential Amenities

- Drinking fountain (with dog dishes)
- Shade structure/shelter (fabric, metal, wood, TBD)
- Separate small dog area (separate entry gate)
- Dog shower area (to rinse paws)
- Exercise or agility equipment
- Donation Recognition



# Possible Site Locations





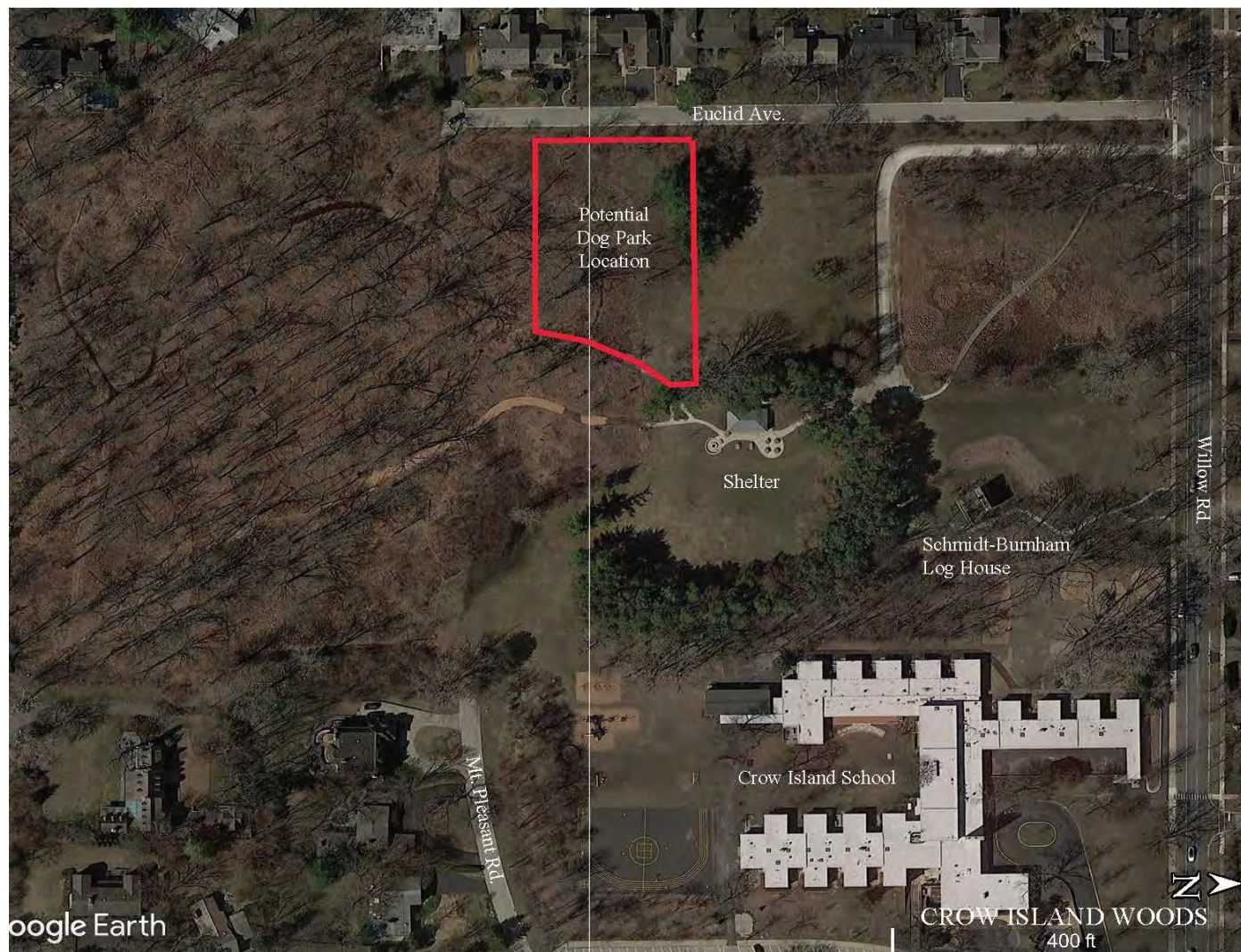
# West Elm Street Park



- Property size 3.74 acres
- Has potential to meet base criteria
  - Consideration- close to neighbors and Skokie School
  - Topography
  - Mature tree canopy
- Parking is limited to on-street (currently)



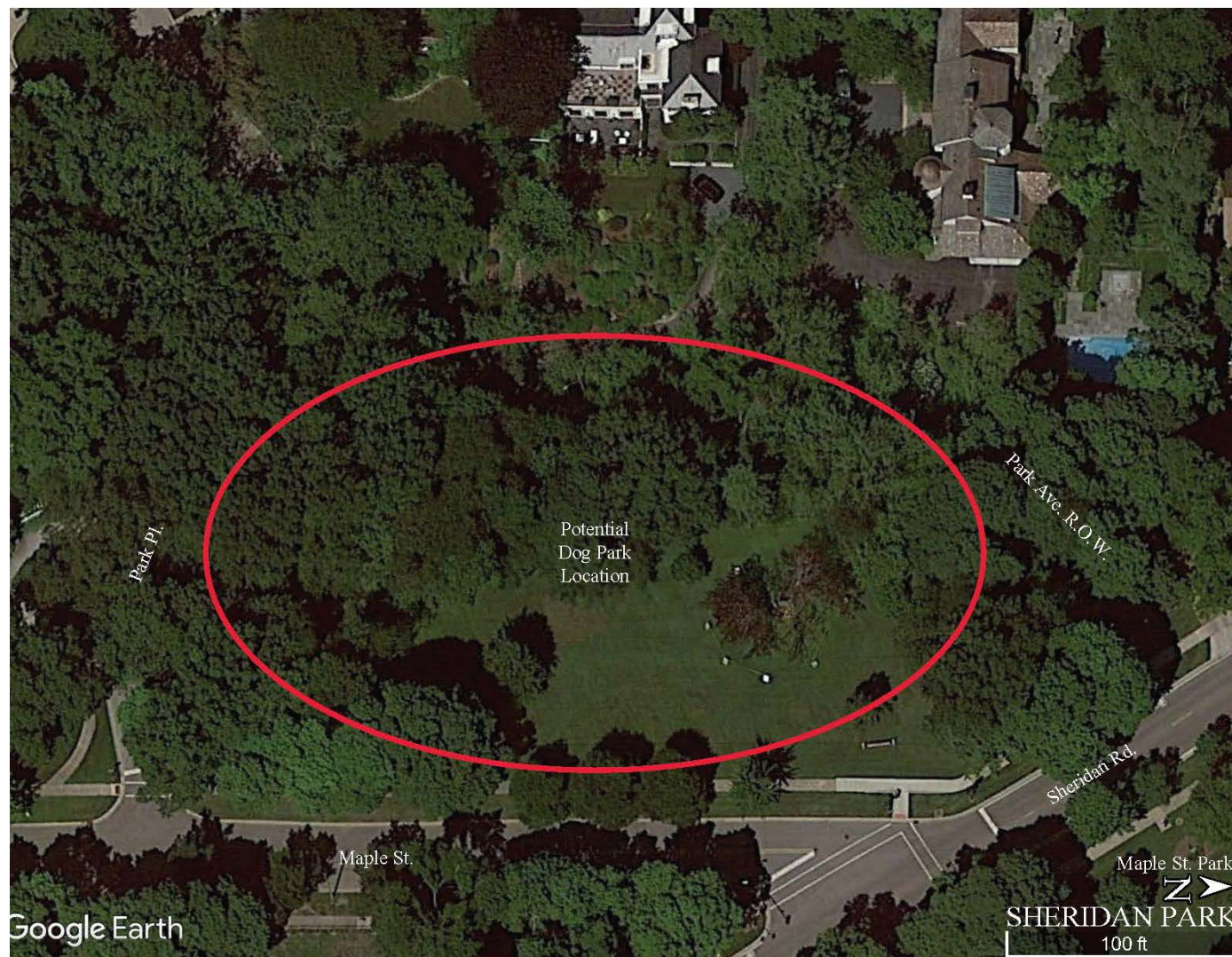
# Crow Island Woods



- Property size 17.91 acres
- Has potential to meet base criteria
  - Proximity to neighbors playground/school
- Parking considerations
- Multi-use park site (conflicts: rentals, natural areas, council tree circle)



# Sheridan Park



- Property size 1.2 acres
- Has potential to meet base criteria
  - Proximity to neighbors
- Parking considerations
- Owned by Village of Winnetka

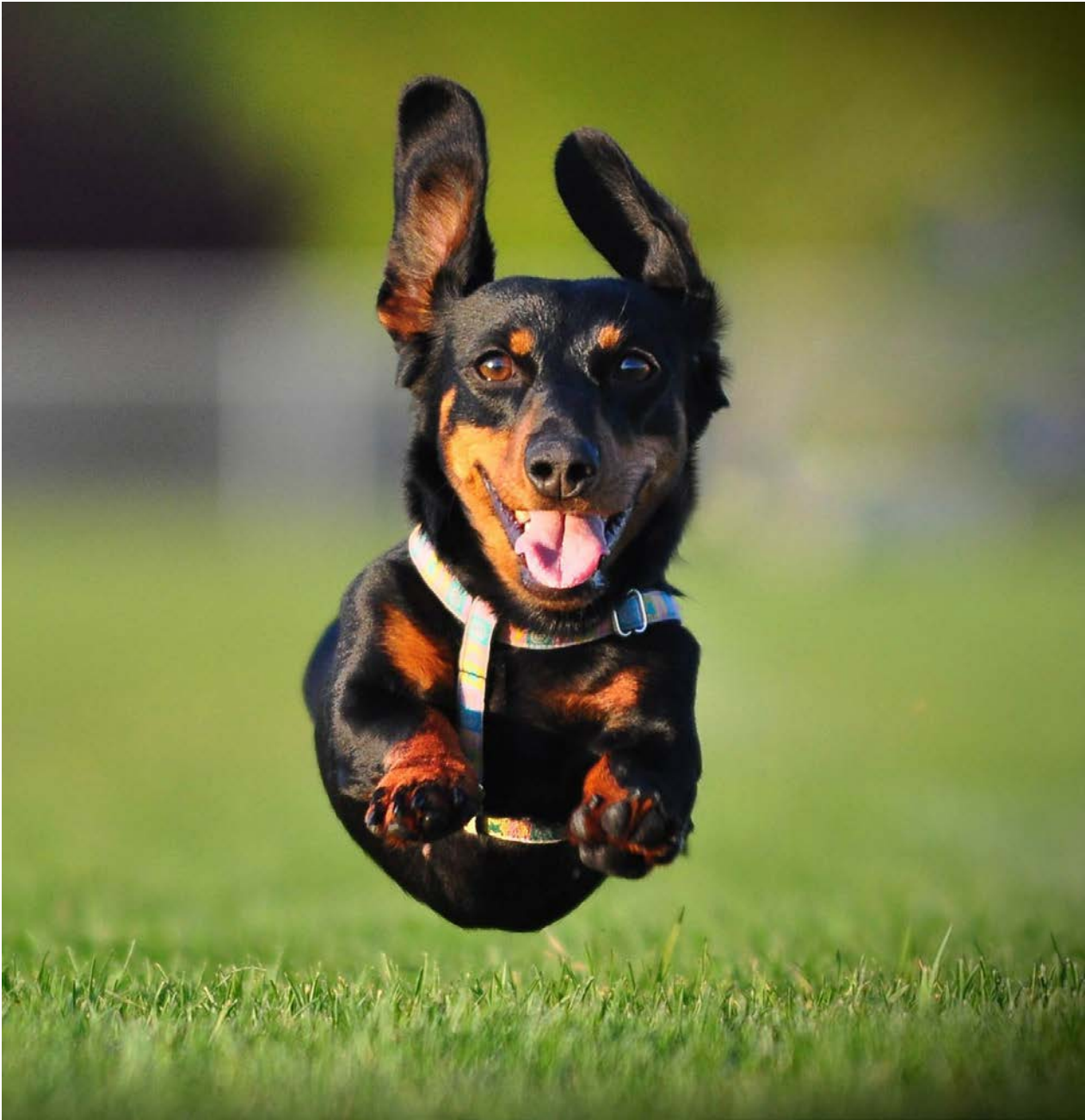


# Village Landfill



- North Location size 1 acre  
(possibly available)
- Has the potential to meet the  
base criteria
  - Best community use of this space?
- Parking considerations
- Owned by Village of Winnetka

# Next Steps



- Identify Top Locations.....
  - Conceptual Designs
  - Stakeholder Engagement
  - Operations Planning
    - Maintenance Plan
    - Budget (Cost Estimate)
    - Fee Structure
- Revisit with the Park Board
- Village Permit Process
- Timeline



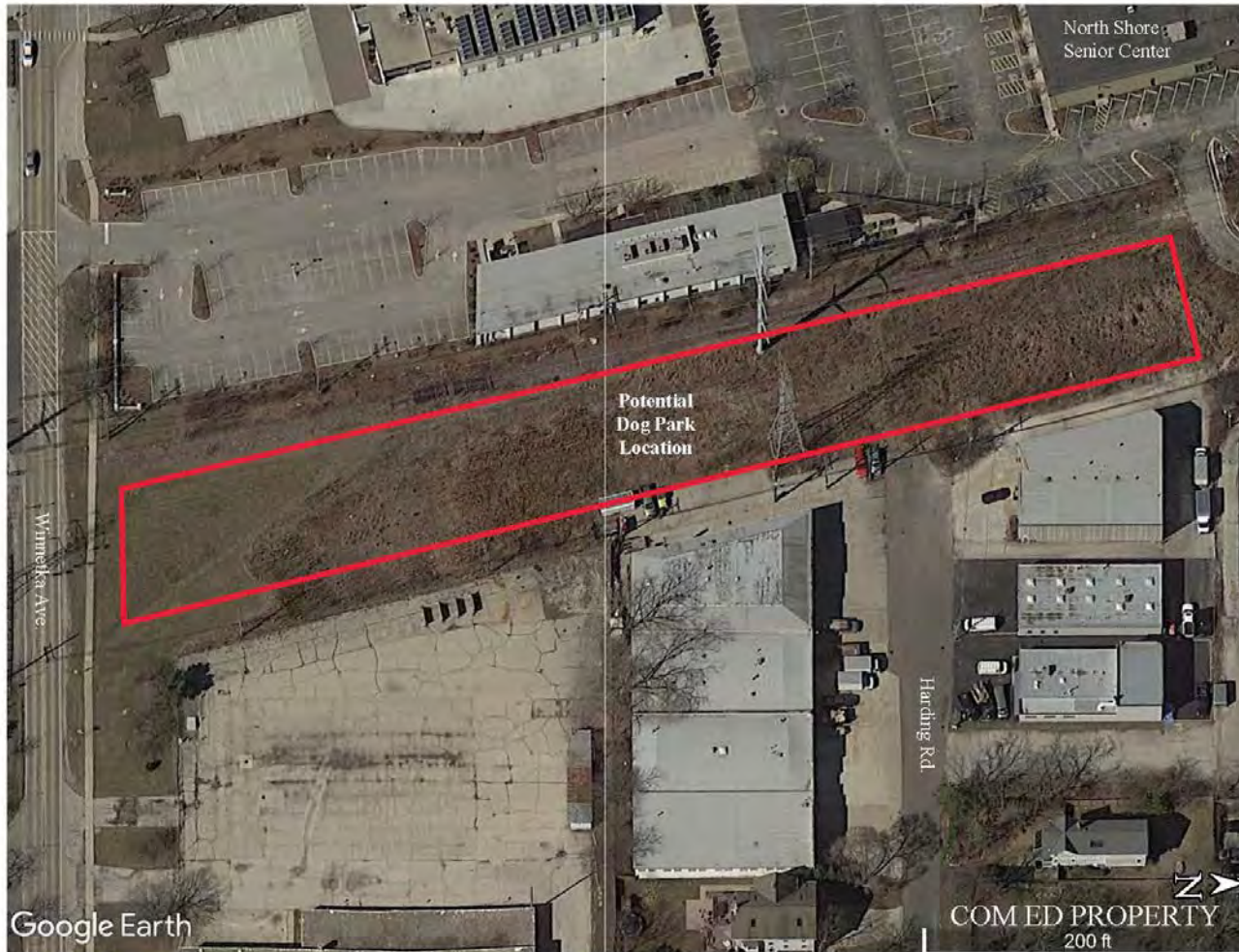
# Questions





# Northfield Utility Easement

- Property size 1.7 acres
- Has the potential to meet the base criteria
  - neighbors and business in close proximity
- Parking considerations
- Owned by UP & ComEd



# Cook County FPD



- Property size TBD acres
- Has the potential to meet the base criteria
  - New Trier West Campus is in close proximity
- Parking considerations
- Owned by CCFPD