



Winnetka Park District
540 Hibbard Road, Winnetka IL 60093
(847) 501-2040 | winpark.org



June 24-25, 2019

Dear Residents:

Thank you for your participation in the proposed dog park stakeholder/community engagement. We look forward to continued dialogue, thoughts and ideas. We are here to listen to all viewpoints as we continue working our way through this process.

Although this idea re-surfaced in December 2018 when a citizens group interested in a fenced-in, off-leash dog park approached the Park Board, its real genesis came out of the 2016 Winnetka Park District Community Needs Assessment Survey. An off-leash dog park was ranked as a top five priority investment and a number two unmet need for parks and facilities.

Our stakeholder/community engagement phase is by the “playbook” that we subscribe to with all potential community-wide park projects. There are no foregone conclusions or final decisions made at this point.

This packet is a culmination of the exhibits on display at these two days of engagement, which includes:

- Timeline to Date
- Conceptual Site Plan – Crow Island Woods & West Elm Park
- Dog Park Site Suitability Chart
- Preferred Criteria for Dog Park
- Dog Park Basic Site Features

At the conclusion of the June 20, 2019 Park Board meeting the Board clarified its position and are open to re-explore the Village Landfill and Cook County Forest Preserve sites as potential alternatives. This would coincide with our current conversations about the two Park District sites. The preliminary work on these two alternatives will be re-engaged by staff.

Additionally, the Park Board clarified that the original timeline will potentially be adjusted after the stakeholder/community engagement. This information will be widely communicated and made available on the dedicated webpage, www.winnpark.org/dog-park.

Once again, thank you for your active participation in the process.

Winnetka Park District

Dog Park Timeline

**MAY
2016**

Community needs assessment survey identifies dog park as top 5 priority

**DEC
2018**

Residents approach board to advocate for an off-leash dog park

**JAN
2019**

Board directs staff to prioritize dog park

**FEB
2019**

Staff conducts research & meets with Village to develop minimum requirements

**MAR
2019**

Staff evaluates 33 sites and identifies 4 as meeting minimum requirements

**APR
2019**

Staff evaluates top 4 sites

**MAY
2019**

Board narrows down scope of consideration to 2 sites

**JUN
2019**

Staff conducts community engagement & meets with District 36 to solicit feedback

Base Criteria for Potential Fenced-in Off-Leash Dog Park

Base Criteria

Existing use vs. Proposed use

Environmental impact

Size between 1 and 2 acres

Grass areas

Shade trees

No playground on project site (adjacent would need to be reviewed)

No school on project site (adjacent would need to be reviewed)

Minimal impact to adjacent residents

Noise

Traffic/access

10 parking spaces (minimum; off-street preferred)

Winnetka Park District ownership (sites not owned by WPD would need to be reviewed)

Base Amenities

4'0" high (minimum) fencing with double entry gates & maintenance gate

Signage (rules and regulations)

Key card access system

Site furnishings (benches, picnic tables, waste receptacles, dog bag dispensers, etc.)

Pathways (crushed stone or wood fiber)

ADA accessibility

Potential Future Amenities

Drinking fountain (with dog dishes)

Dog wash area (to rinse paws)

Shade structure/shelter (fabric, metal, wood, TBD)

Separate small dog area (separate entry gate)

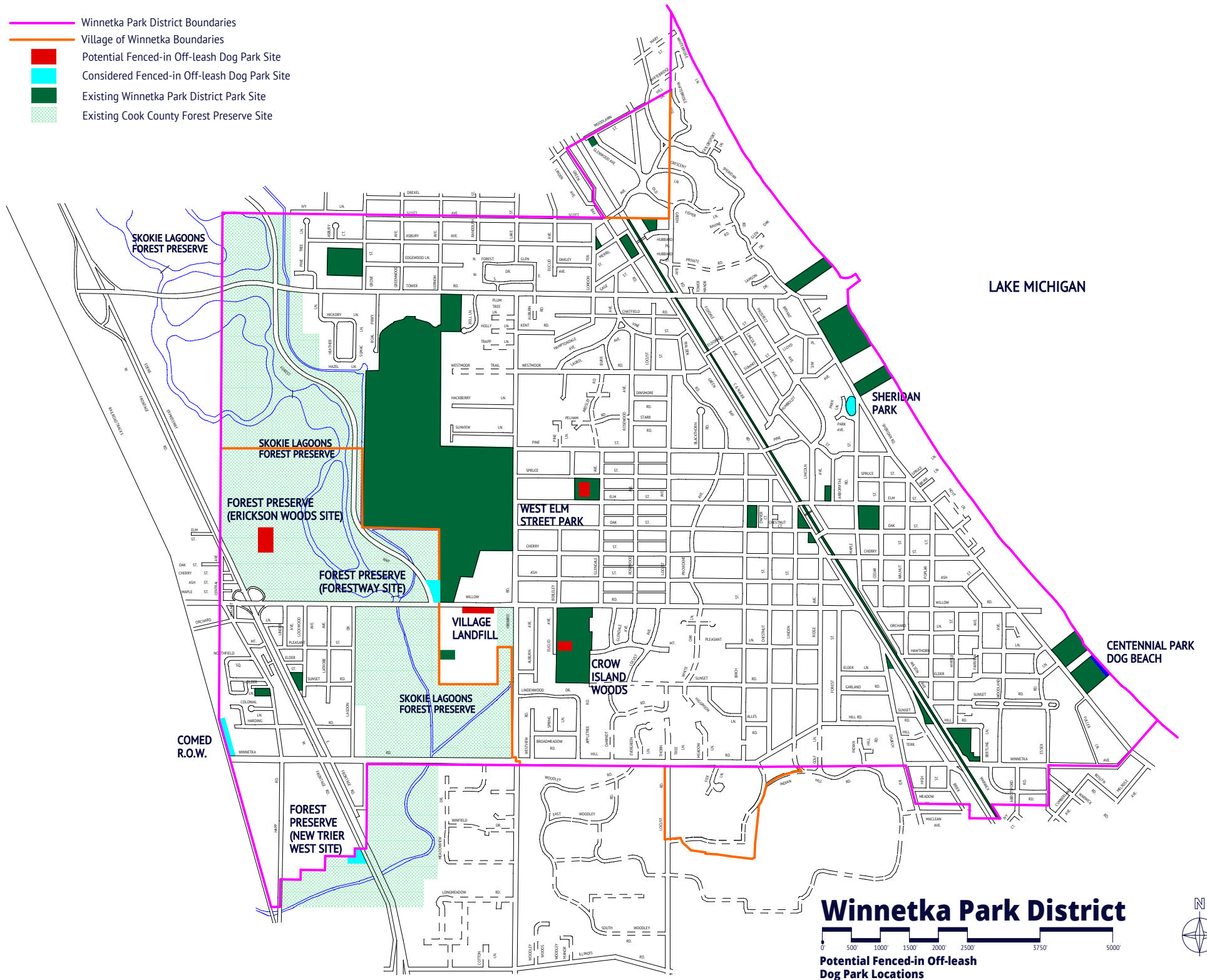
Exercise or agility equipment

Donation recognition

Winnetka Park District Fenced-in Off-leash Potential Dog Park Site Evaluation

Park Site	Acreage	Owner	Current On-leash Dog Site	Off-leash Dog Park Suitability	Reason Site is Not Suitable
Arboretum Park	0.09 acres	Winnetka Park District	Yes	No	Undersized
Bell Woods	2.57 acres	Winnetka Park District	Yes	No	Parking restrictions
Centennial Park	5.22 acres	Winnetka Park District	Yes	No	Not in Winnetka Waterfront 2030
Crow Island Woods	17.91 acres	Winnetka Park District	Yes	Yes	
Dwyer Park	1.23 acres	Winnetka Park District	No	No	Playground on site
Elder Lane Park	4.56 acres	Winnetka Park District	No	No	Not in Winnetka Waterfront 2030
Franklin Dunbaugh Park	1.42 acres	Winnetka Park District	Yes	No	Donation & parking restrictions
Glencoe Park	0.39 acres	Winnetka Park District	No	No	Playground on site
Green Bay Trail	9.38 acres	Village of Winnetka	No	No	Conflicts with pedestrian & bicycle use of trail
Happ Road Park	0.38 acres	Winnetka Park District	No	No	Playground on site
Hill Road Park	0.30 acres	Winnetka Park District	Yes	No	Undersized
Hubbard Woods Park	1.38 acres	Winnetka Park District	No	No	Playground on site
Indian Hill Park	3.36 acres	Winnetka Park District	No	No	Playground on site
Library Park	0.26 acres	Winnetka Park District	Yes	No	Undersized
Lloyd Park	9.53 acres	Winnetka Park District	No	No	Not in Winnetka Waterfront 2030
Maple Street Park	3.00 acres	Winnetka Park District	No	No	Not in Winnetka Waterfront 2030
Merrill Park	0.13 acres	Winnetka Park District	Yes	No	Undersized
Nick Corwin Park	6.05 acres	Winnetka Park District	No	No	Playground on site
Northfield Park	1.99 acres	Winnetka Park District	No	No	Playground on site
Parks Service Center	1.24 acres	Village of Winnetka	No	No	Entire site used for Parks Service Center
Robert E. Burke Memorial Park	0.23 acres	Village of Winnetka	Yes	No	Undersized
Sheridan Park	1.20 acres	Village of Winnetka	Yes	Yes	Removed per Winnetka Park District Board direction in May, 2019
Skokie Playfield	162.01 acres	Winnetka Park District & Village of Winnetka	No	No	Playground on site; Recreational capacity
Station Park	0.83 acres	Winnetka Park District	Yes	No	Undersized
Tower Road Park	3.75 acres	Winnetka Park District	No	No	Not in Winnetka Waterfront 2030
Village Green	3.34 acres	Village of Winnetka	No	No	Playground on site
West Elm Street Park	3.74 acres	Winnetka Park District	Yes	Yes	
OTHER POSSIBLE SITES					
Sunset Road Parkway	1.5 acres (approx.)	Village of Winnetka	N.A.	No	Undersized (narrow & split site)
Village Landfill (North Terrace)	1.1 acres (approx.)	Village of Winnetka	N.A.	Yes	
Northfield Utility Line Easements	2.2 acres (approx.)	ComEd; Union Pacific	N.A.	Yes	Proposed recreational trail
Cook County Forest Preserve Forestway Site	0.8 acres (approx.)	Cook County Forest Preserve District	N.A.	No	Cook County Forest Preserve District says there are no current plans to add a dog park to its current inventory; Undersized
Cook County Forest Preserve New Trier West Site	1.0 acres (approx.)	Cook County Forest Preserve District	N.A.	Yes	Cook County Forest Preserve District says there are no current plans to add a dog park to its current inventory
Cook County Forest Preserve Erickson Woods Site	2.6 acres (approx.)	Cook County Forest Preserve District	N.A.	Yes	

- Winnetka Park District Boundaries
- Village of Winnetka Boundaries
- Potential Fenced-in Off-leash Dog Park Site
- Considered Fenced-in Off-leash Dog Park Site
- Existing Winnetka Park District Park Site
- Existing Cook County Forest Preserve Site

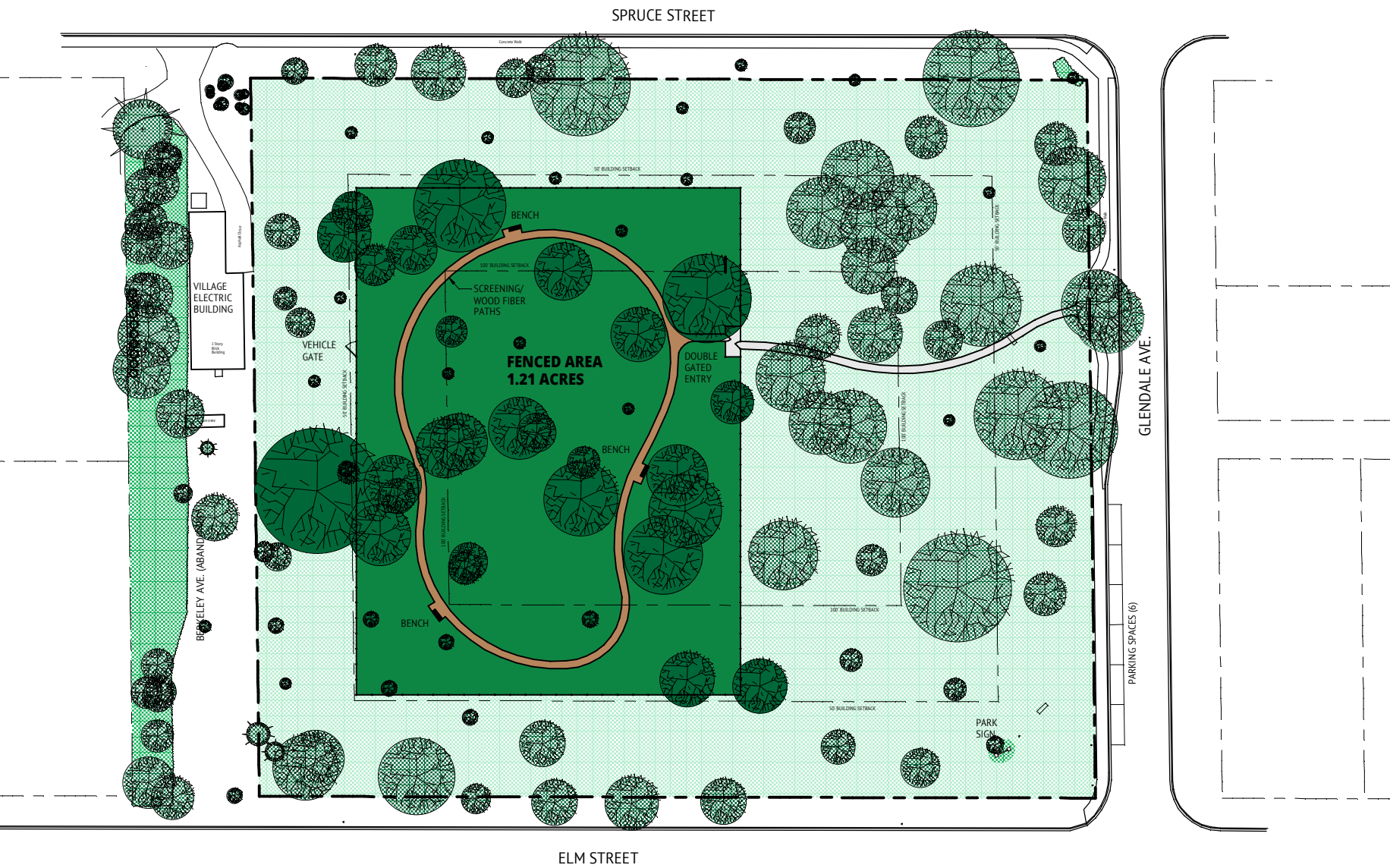


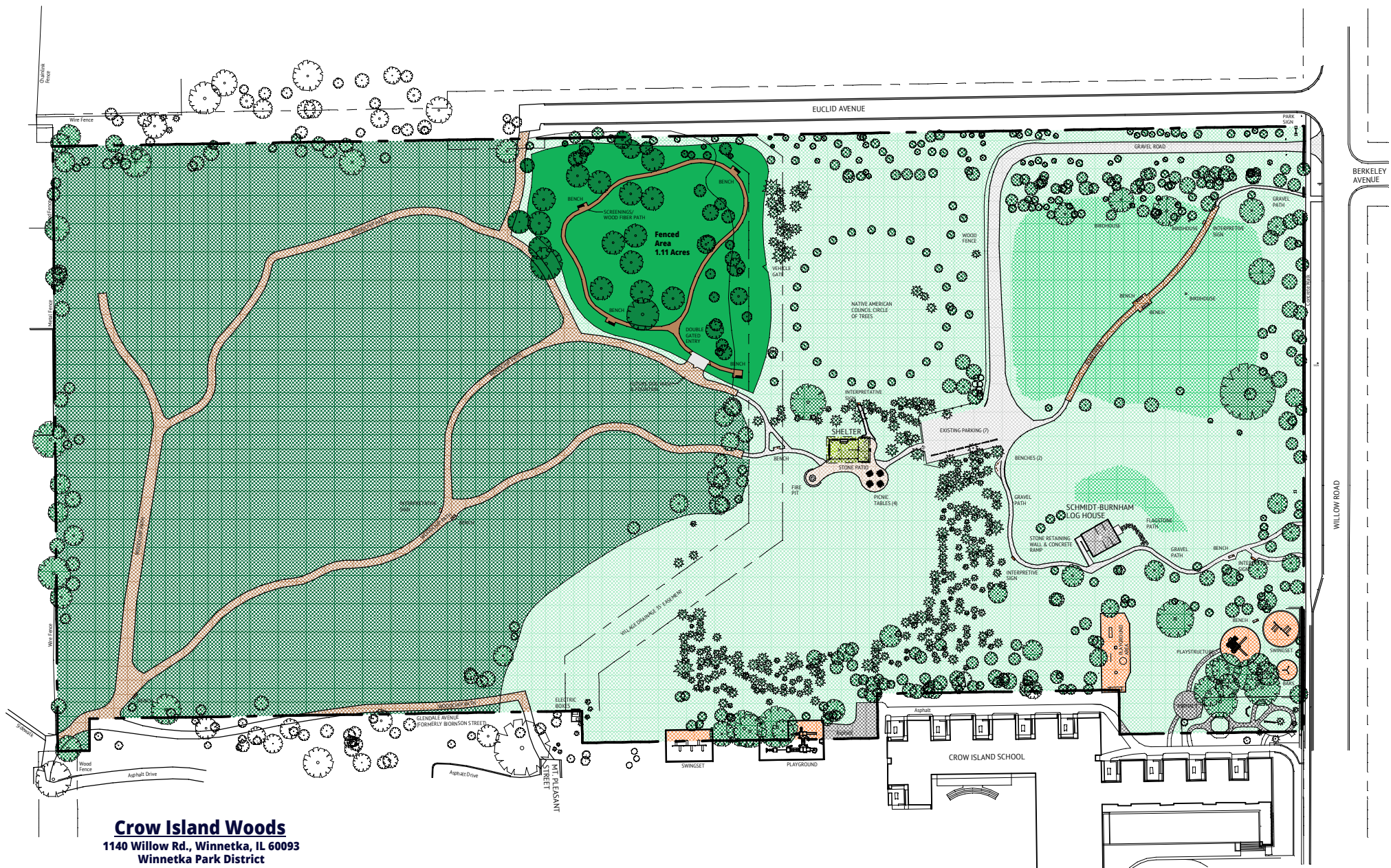
Winnetka Park District

Potential Fenced-in Off-leash
Dog Park Locations



West Elm Street Park
 1155 Elm St., Winnetka, IL 60093
 Winnetka Park District
 Potential Fenced-in Off-leash
 Dog Park Concept





Crow Island Woods

1140 Willow Rd., Winnetka, IL 60093

Winnetka Park District

Potential Fenced-in Off-leash

Dog Park Concept





Double Gated Entry w/ Key Card System



Wood Post & Rail Fence w/ Wire Mesh



Site Furniture



Pathways

Potential Fenced-in Off-leash Dog Park Site Features