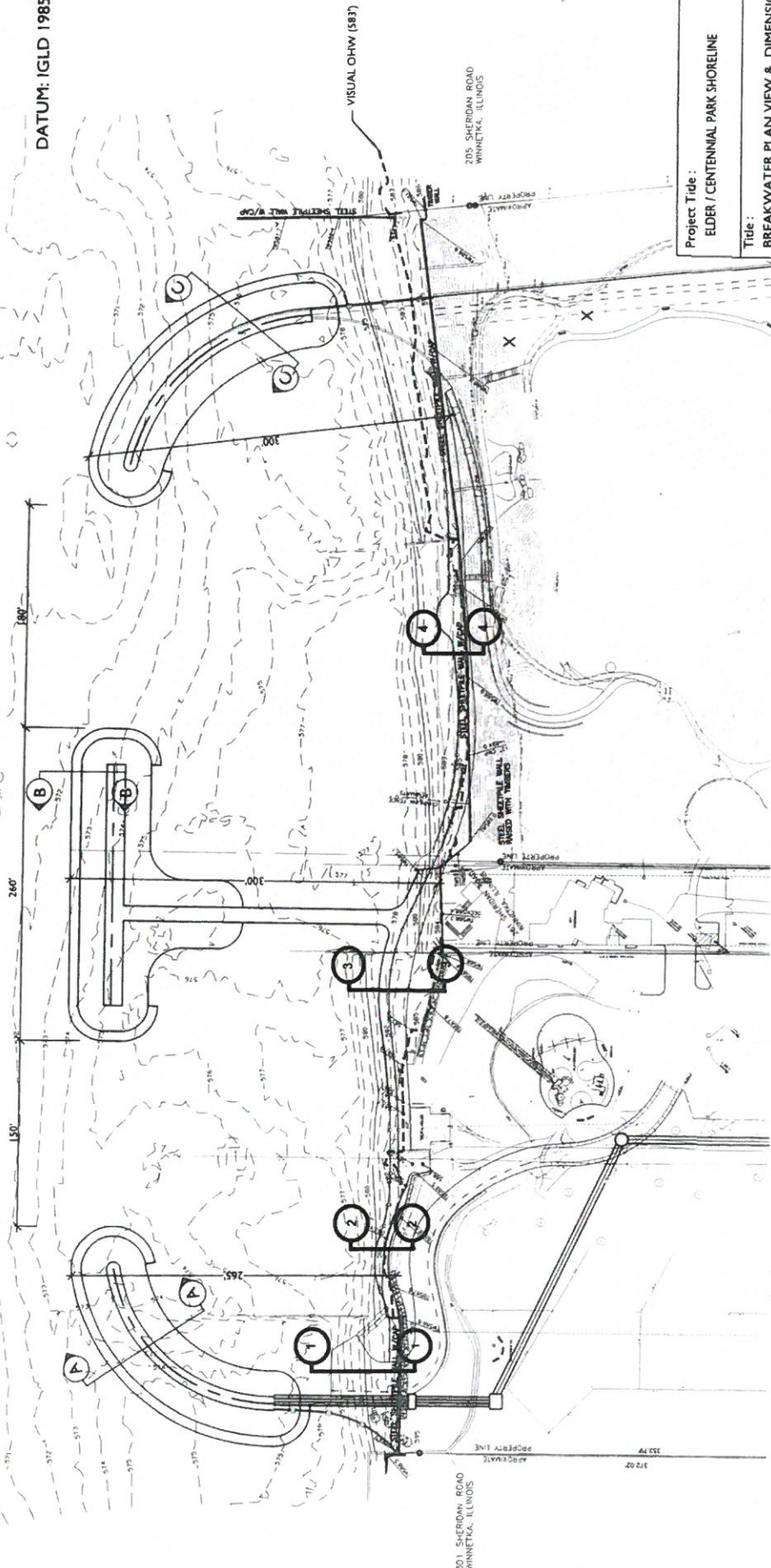




DATUM: IGLD 1985

LAKE MICHIGAN
LAKE LEVEL=581.9 IGLD85
(11-4-2021)



Project Title:
ELDER / CENTENNIAL PARK SHORELINE

Title:
BREAKWATER PLAN VIEW & DIMENSIONS

USACE Cross Section Request #1 - #4

Date: 11 APRIL 2022

Scale: 0' 40' 80'

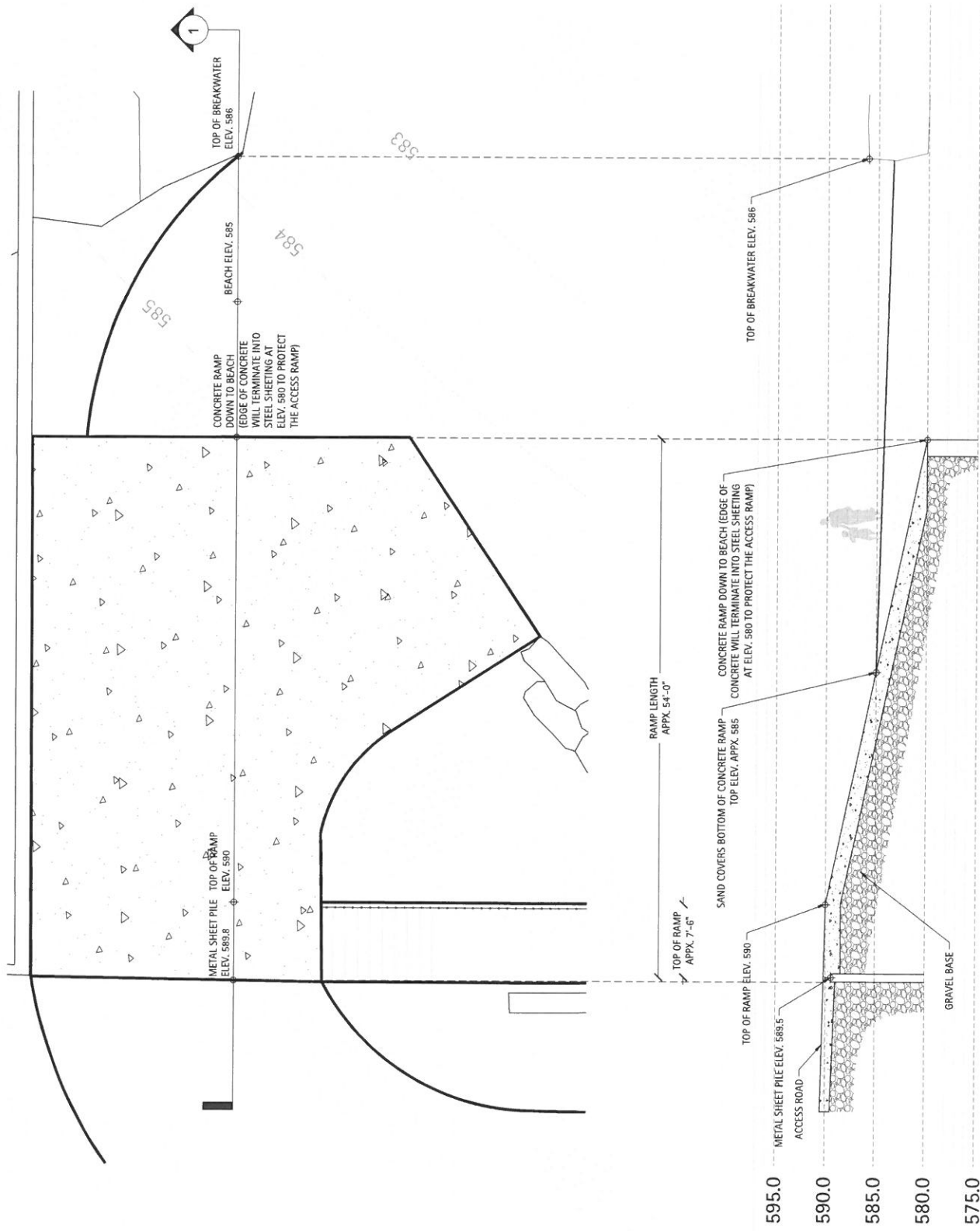
225 SHERIDAN ROAD
WINNETKA, IL

299 SHERIDAN ROAD
WINNETKA, IL

301 SHERIDAN ROAD
WINNETKA, ILLINOIS

VISUAL OHW (583)

205 SHERIDAN ROAD
WINNETKA, ILLINOIS

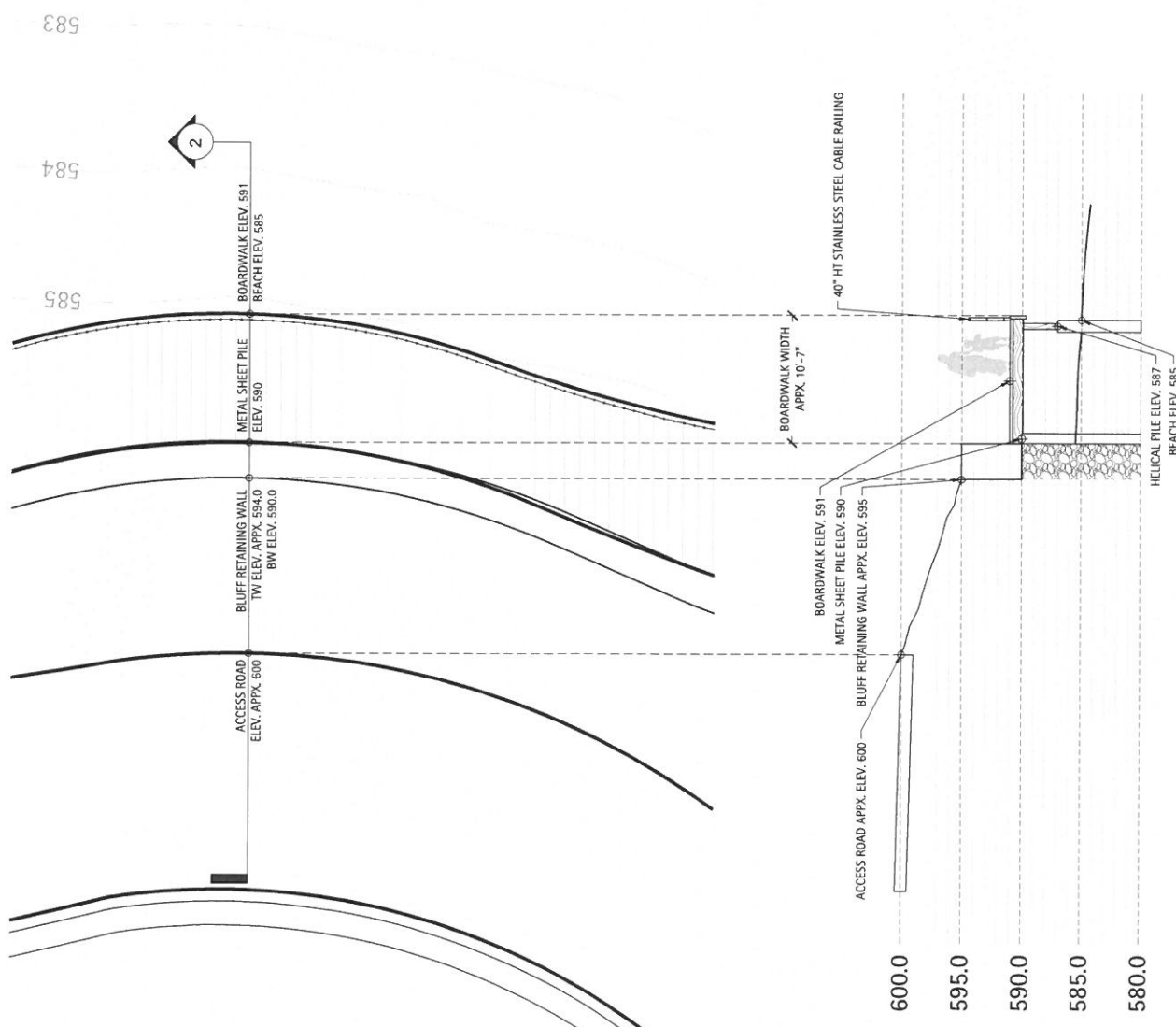


1 Elder/Centennial - Section Through Concrete Ramp

Scale: 1" = 4'-0"

11 APRIL 2022





2 Elder/Centennial - Section Through Boardwalk at Elder Beach Service Drive

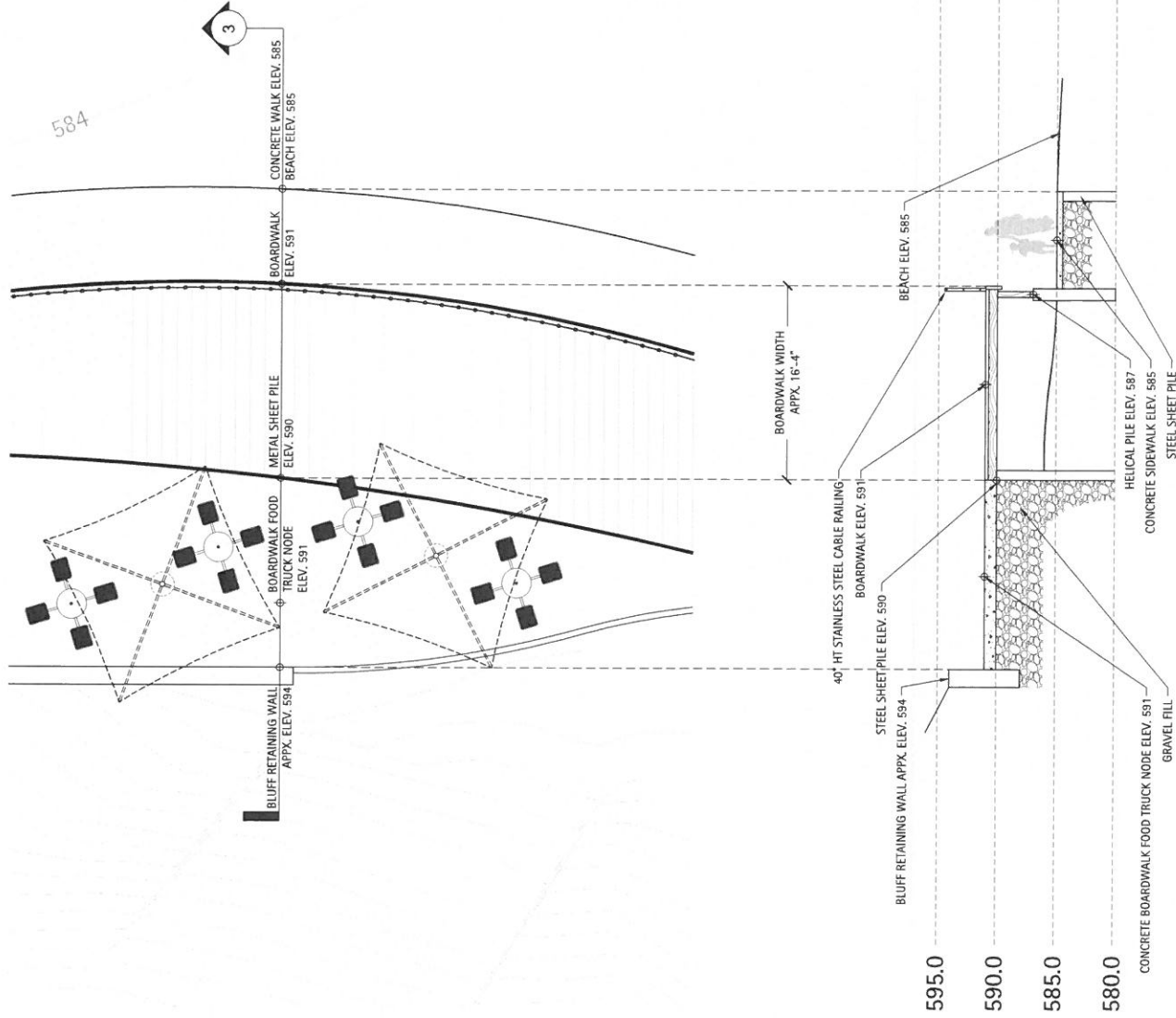
Scale: 1" = 4'-0"

11 APRIL 2022



583

584

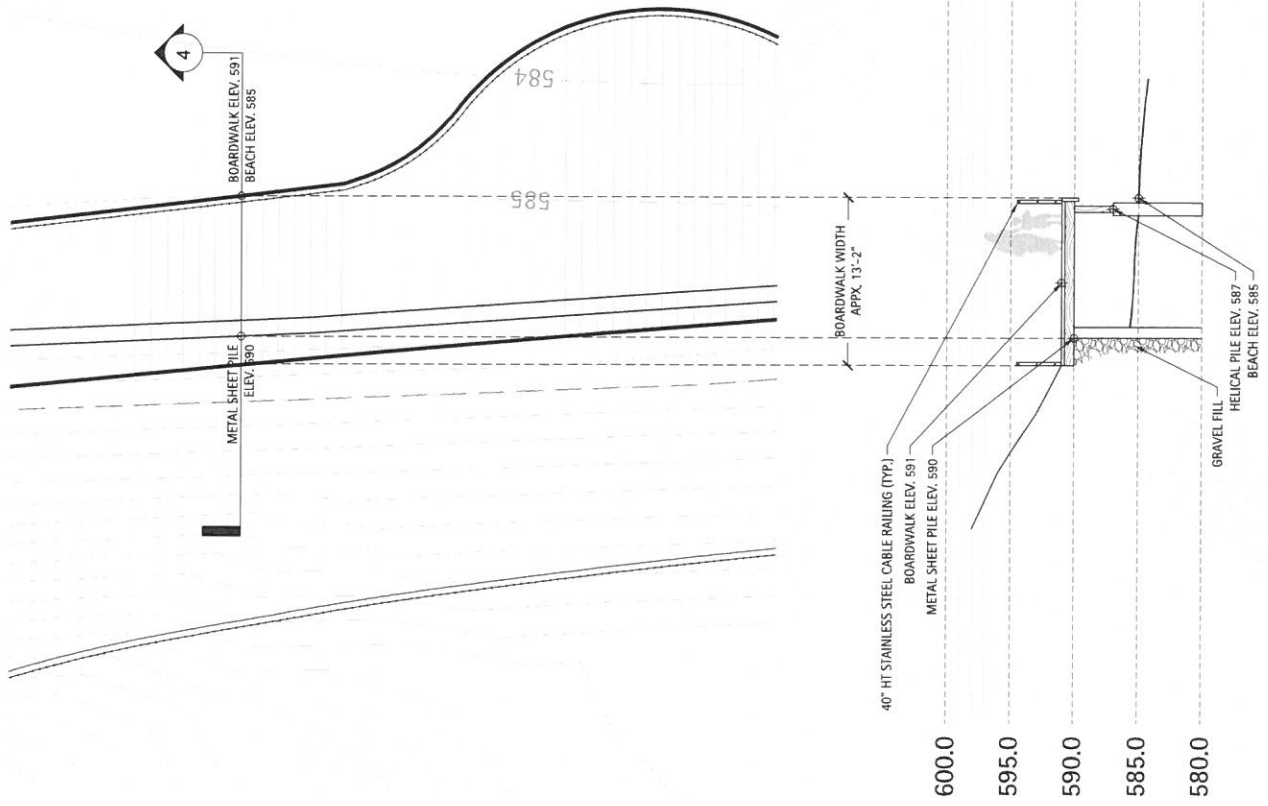


3 Elder/Centennial - Section Through Boardwalk at Concrete Food Truck Node

Scale: 1" = 4'-0"

11 APRIL 2022





4 Elder/Centennial - Section Through Boardwalk at Centennial Beach

Scale: 1" = 4'-0"

11 APRIL 2022

