



## Elder Lane + Centennial Beach Project Timeline

TIMELINE IS BASED ON WHAT WE KNOW CURRENTLY +  
THE APPROVAL PROCESS AS OF MARCH 2023

### Elder Lane Park + Beach | Phase One

- Plan review + design | *1ST OR 2ND QUARTER 2023*
- Review + presentation for Park Board approval | *2ND QUARTER 2023*
- Permit review + submittal | *2ND QUARTER 2023*
- Permit review process | *2ND QUARTER 2023 (CAN BE A 6 - 18 MONTH PROCESS)*
- Final plan + review process | *3RD QUARTER 2023 (ANTICIPATED)*
- Bid review + presentation for Park Board approval | *3RD OR 4TH QUARTER 2023*
- Construction | *4TH QUARTER 2023, WILL RUN THROUGH 3RD QUARTER 2024 (ANTICIPATED)*

### Centennial Park + Beach | Phase One

- Plan review + design | *2ND QUARTER 2023*
- Review + presentation for Park Board approval | *2ND QUARTER 2023*
- Permit review + submittal | *2ND OR 3RD QUARTER 2023*
- Permit review process | *2ND OR 3RD QUARTER 2023 (CAN BE A 6 - 18 MONTH PROCESS)*
- Final plan + review process | *3RD QUARTER 2023 (ANTICIPATED)*
- Bid review + presentation for Park Board approval | *3RD OR 4TH QUARTER 2023*
- Construction | *4TH QUARTER 2023, WILL RUN THROUGH 3RD QUARTER 2024 (ANTICIPATED)*

### Centennial Park + Beach | Phase Two

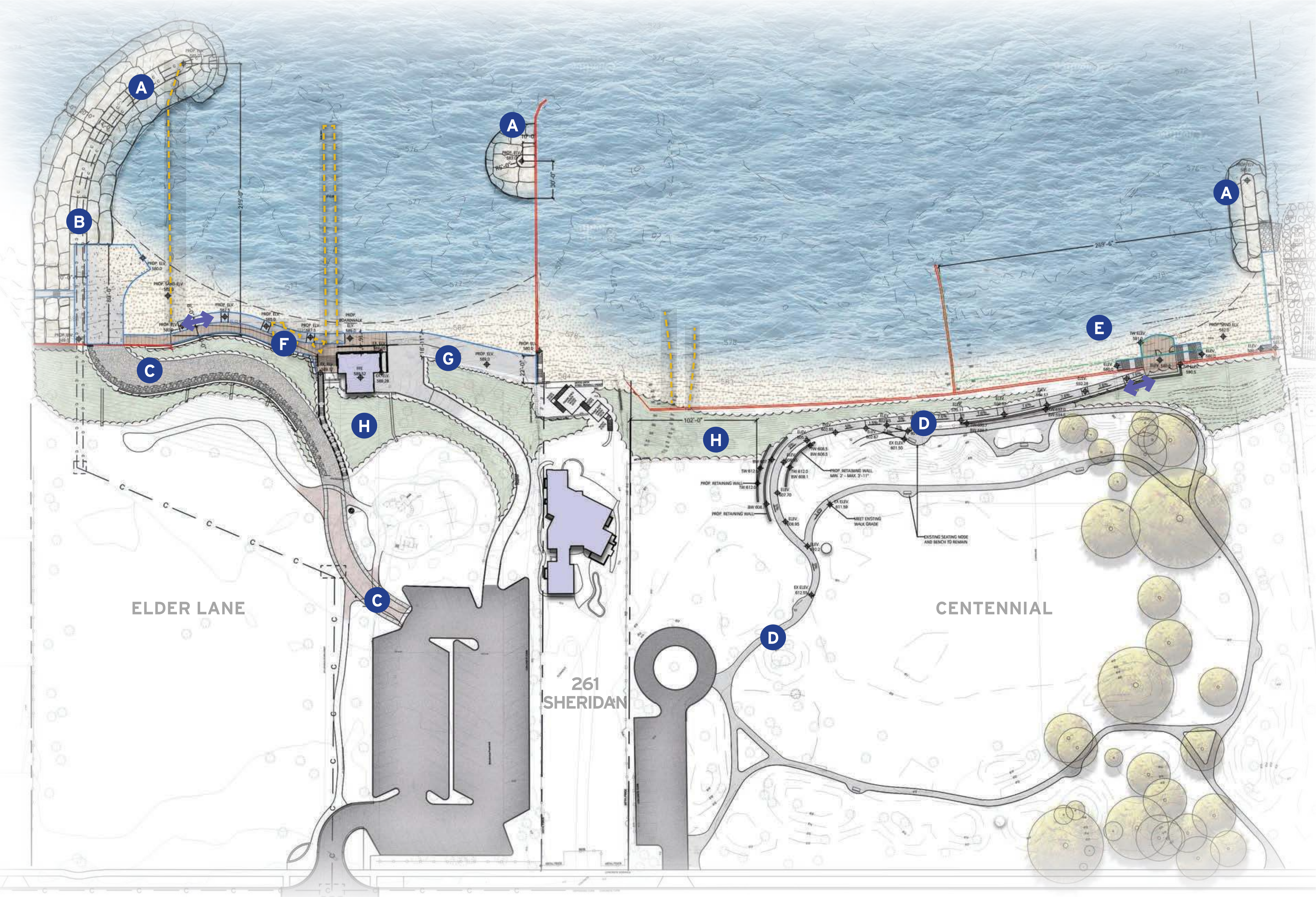
- Contingent upon funding

### Elder Lane + Centennial Beach | Phase Three Beach Unification

- Contingent upon acquisition of 261 Sheridan Road + funding



# Elder + Centennial | Phase One



**LEGEND**

PROPOSED BLUFF RESTORATION

ACCESS TO BEACH

SHEET PILE (PROPOSED)

SHEET PILE (EXISTING)

ITEM TO BE REMOVED

A

STONE BREAKWATER SYSTEM  
SHORELINE PROTECTION

B

PROPOSED STORMWATER REROUTE

C

CONSTRUCTION ACCESS ROUTE  
(FUTURE PREDESTRIAN ONLY)

D

ACCESSIBLE PEDESTRIAN PATH  
TO BEACH

E

PROPOSED CENTENNIAL DOG BEACH

F

BOARDWALK AND BEACH ACCESS

G

PAD FOR FOOD TRUCKS AND SEATING

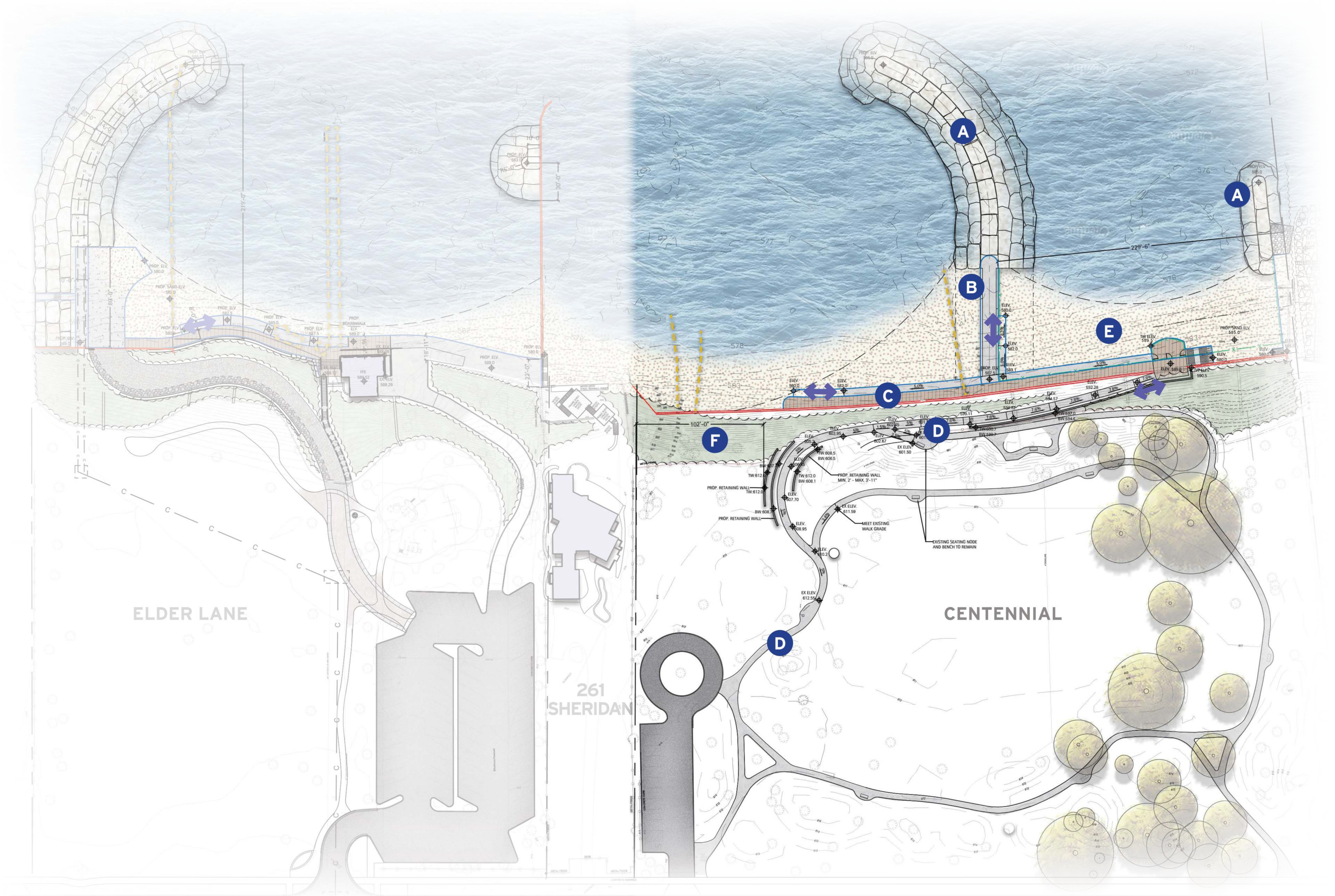
H

BLUFF RESTORATION





# Elder + Centennial | Phase Two



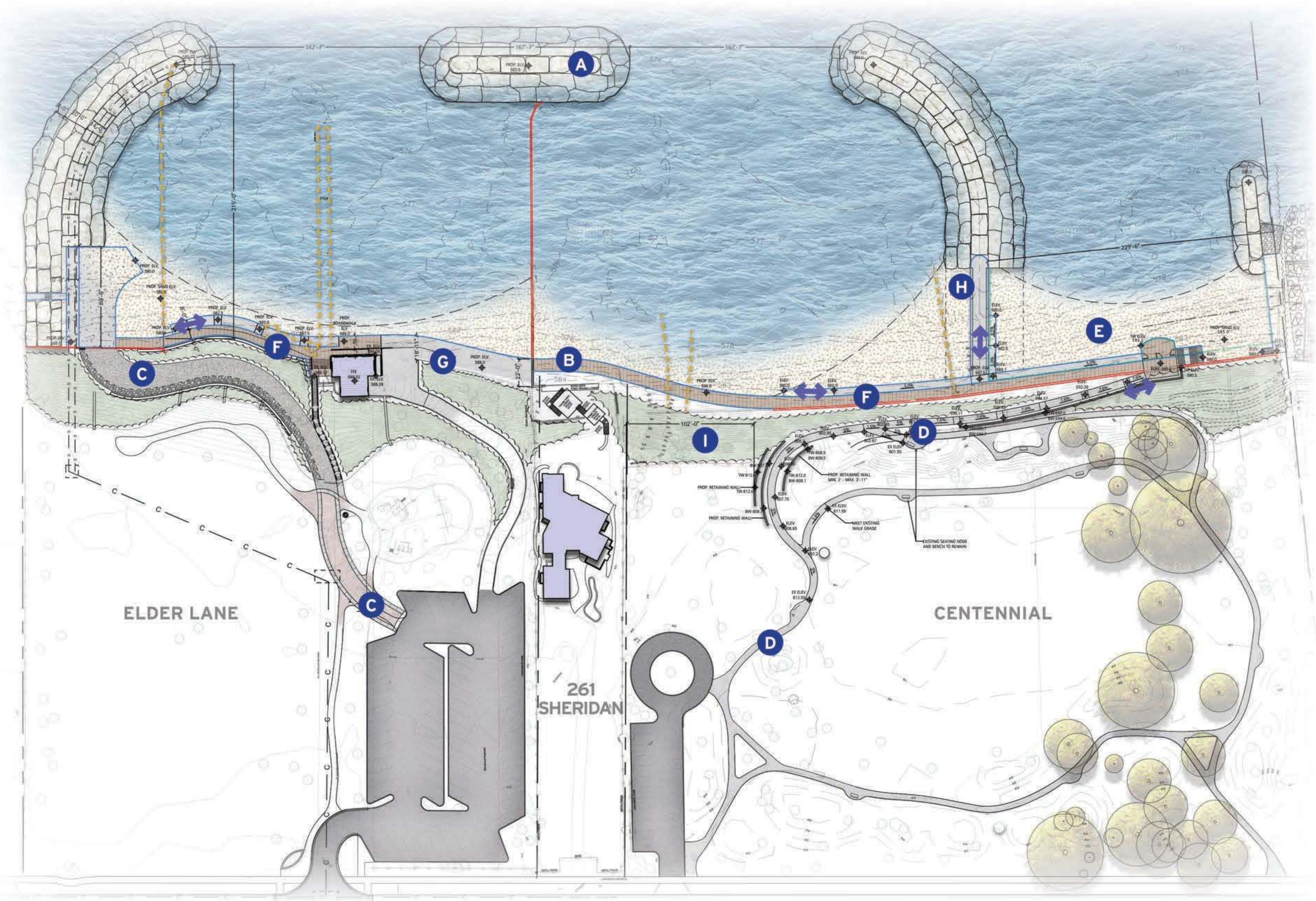
LEGEND

- PROPOSED BLUFF RESTORATION
- ACCESS TO BEACH
- SHEET PILE (PROPOSED)
- SHEET PILE (EXISTING)
- ITEM TO BE REMOVED
- A** STONE BREAKWATER SYSTEM SHORELINE PROTECTION
- B** ACCESSIBLE VIEWING PIER WITH BENCH SEATING
- C** ACCESSIBLE BOARDWALK + BEACH ACCESS
- D** ACCESSIBLE PEDESTRIAN PATH TO BEACH
- E** PROPOSED CENTENNIAL DOG BEACH
- F** BLUFF RESTORATION

SCALE: 1"=40'  
0 20' 40' 80' NORTH



# Elder + Centennial | Phase 3 Full Vision

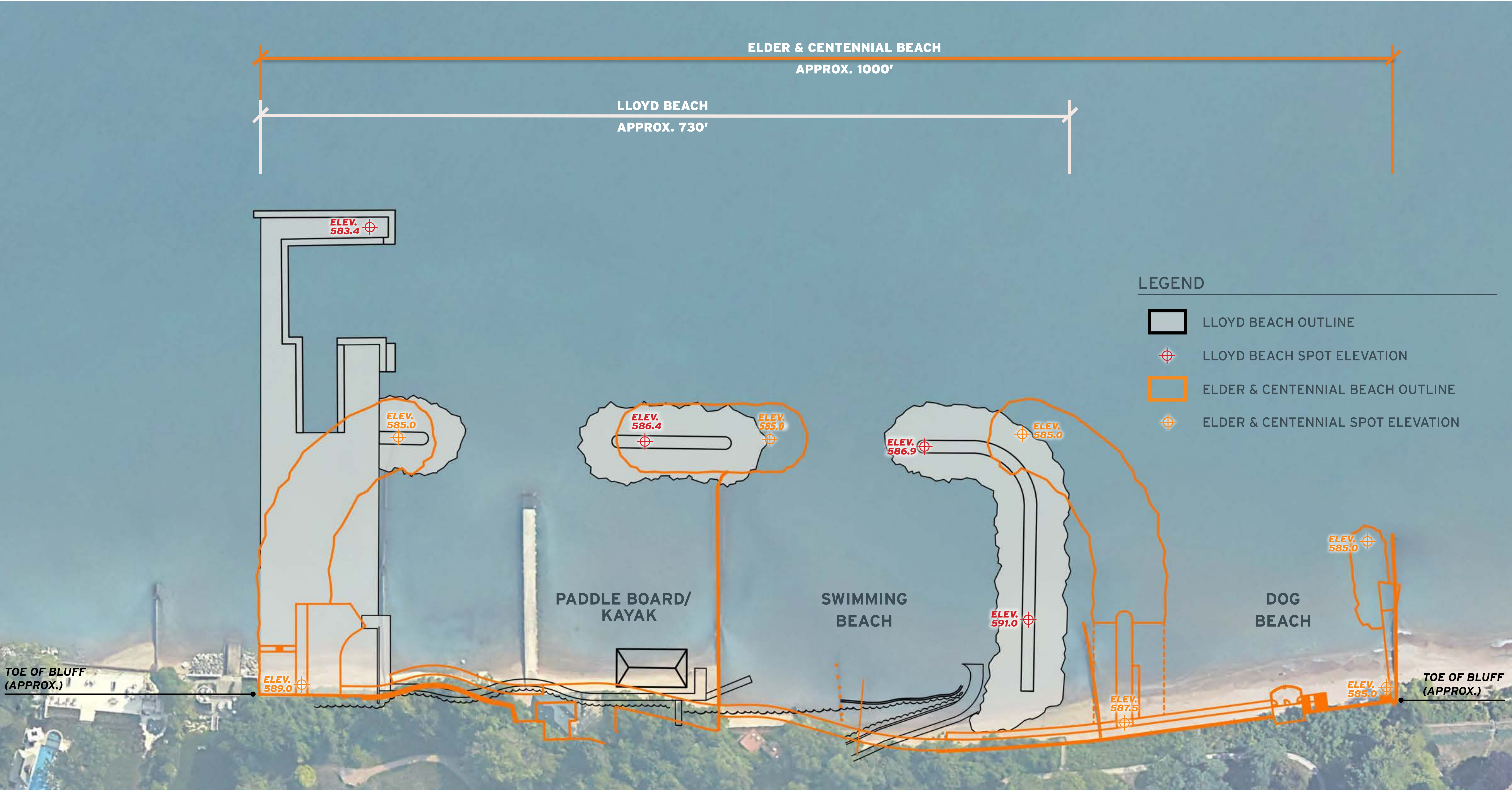


## LEGEND

- PROPOSED BLUFF RESTORATION
  - ACCESS TO BEACH
  - SHEET PILE (PROPOSED)
  - SHEET PILE (EXISTING)
  - ITEM TO BE REMOVED
- 
- A** STONE BREAKWATER SYSTEM SHORELINE PROTECTION
  - B** BOARDWALK CONNECTION
  - C** CONSTRUCTION ACCESS ROUTE (FUTURE PEDESTRIAN ONLY)
  - D** ACCESSIBLE PEDESTRIAN PATH TO BEACH
  - E** PROPOSED CENTENNIAL DOG BEACH
  - F** ACCESSIBLE BOARDWALK + BEACH ACCESS
  - G** PAD FOR FOOD TRUCKS AND SEATING
  - H** ACCESSIBLE VIEWING PIER WITH BENCH SEATING
  - I** BLUFF RESTORATION



# Lloyd Beach v. Elder & Centennial | Scaled Comparison



Please note: this graphic does not currently take into consideration the property exchange agreement.

SCALED VISUAL COMPARISON



# Elder + Centennial | Drone Imagery

ELDER | CENTENNIAL  
BEACH FEASIBILITY STUDY



## Centennial



## Overall Aerial

## Elder Lane





# Elder | Existing Conditions



ELDER LANE | SHORELINE  
SEPTEMBER 2021



ELDER LANE | FAILING GABION  
BLANKETS OCTOBER 2020



ELDER LANE | FAILING GABION  
BLANKETS OCTOBER 2020



ELDER LANE | FAILING PIER  
SEPTEMBER 2020



# Lloyd | Previous Conditions



LLOYD | STEEL ELEVATION 584.4  
JANUARY 2020



LLOYD | STEEL ELEVATION 583.3  
OCTOBER 2019



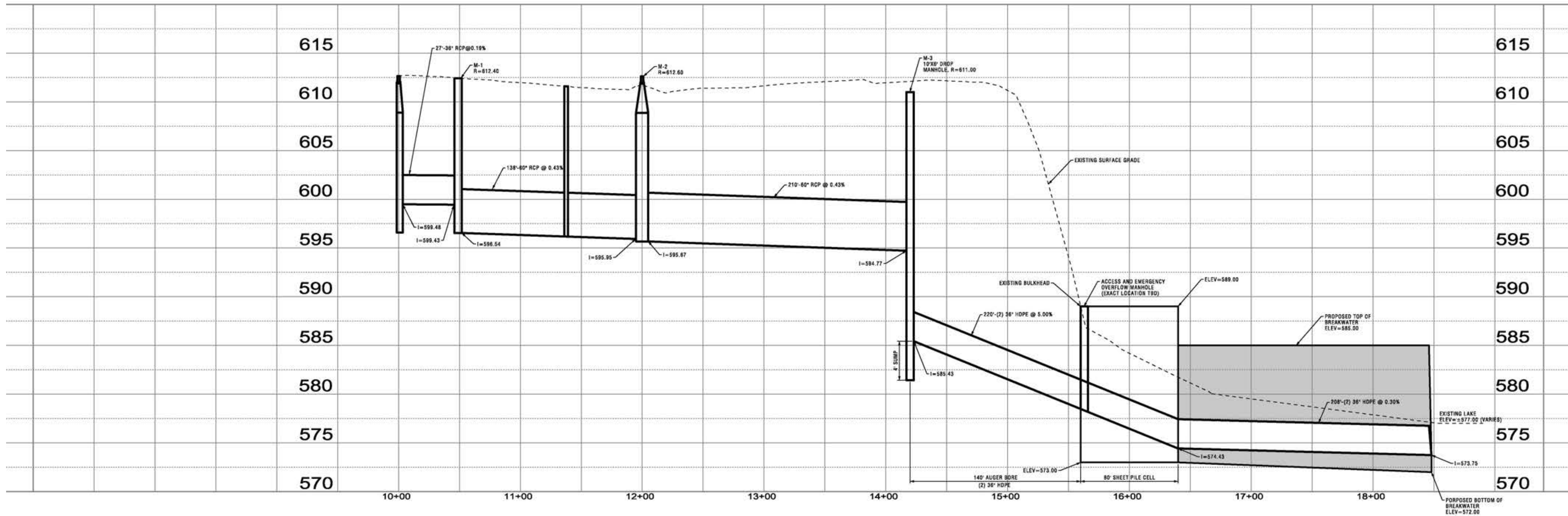
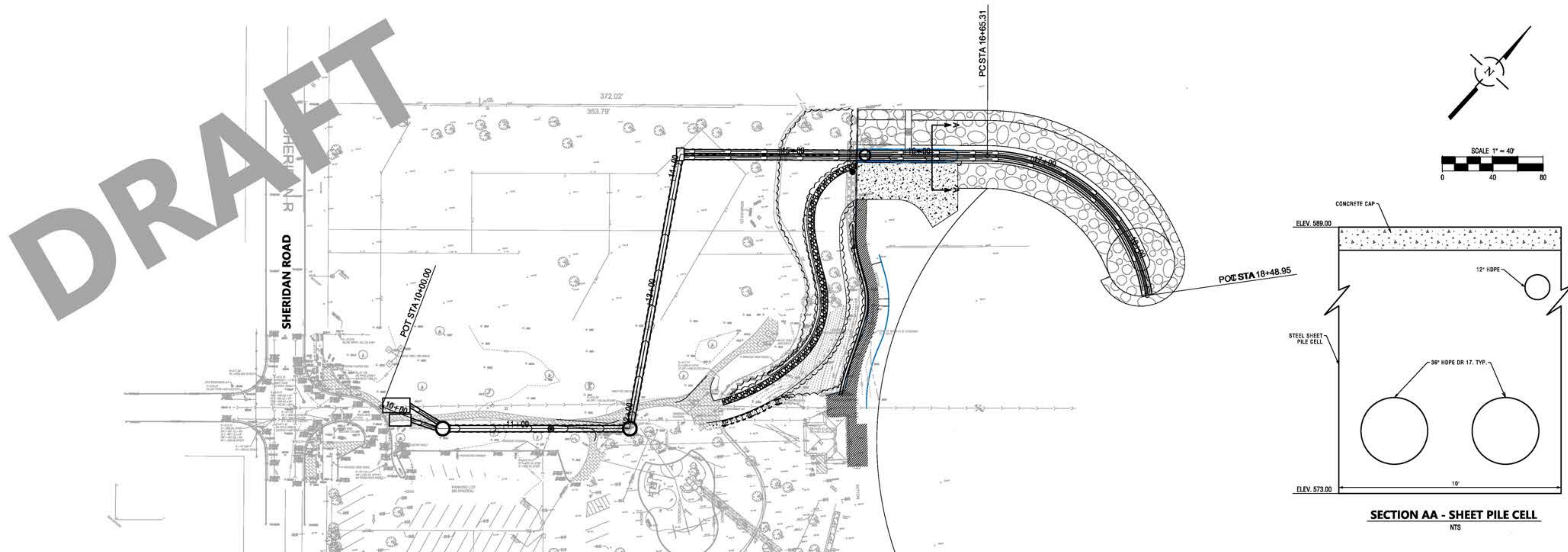
LLOYD | HEIGHT ELEVATION 586.5  
OCTOBER 2019



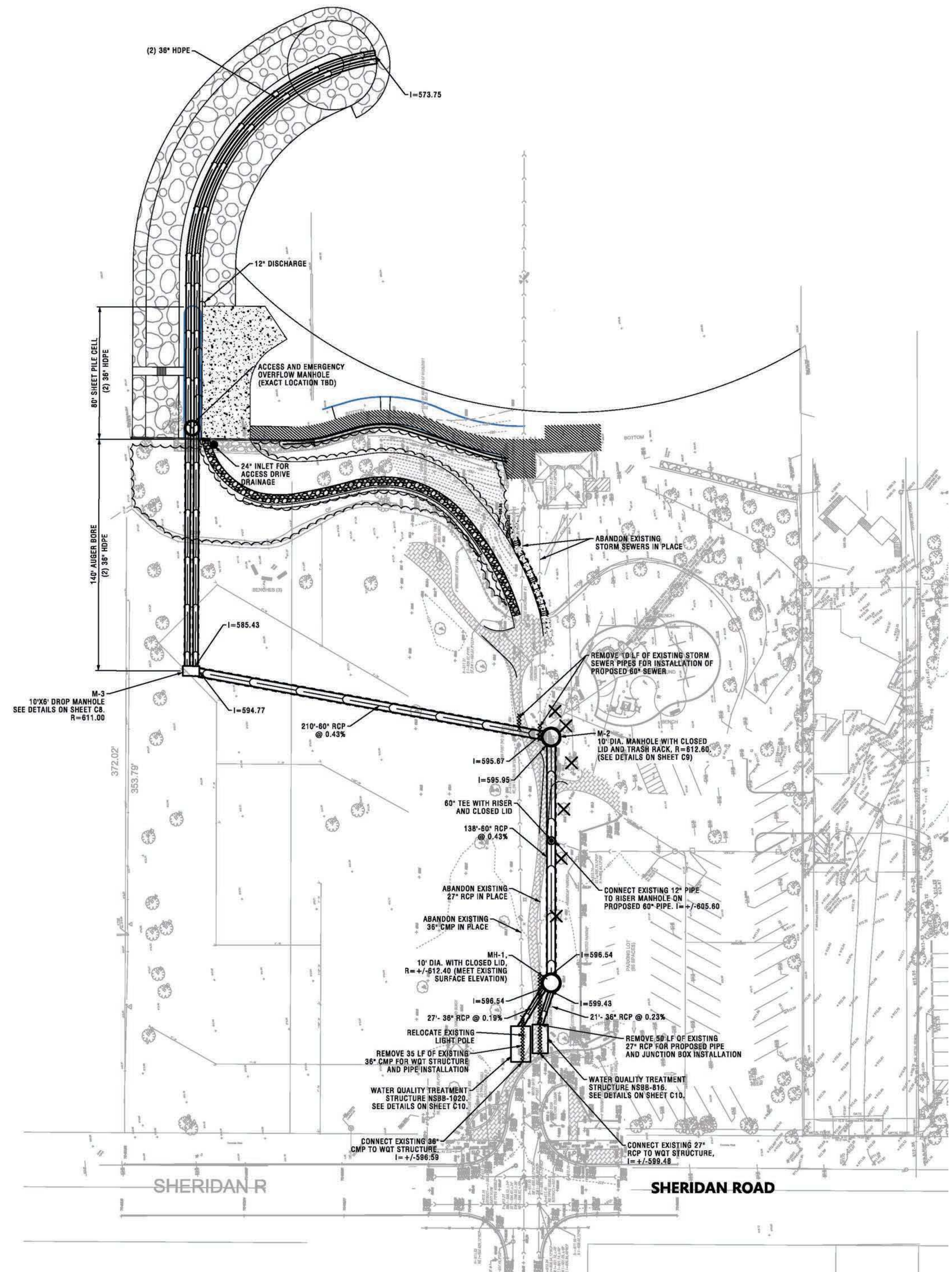
LLOYD | HEIGHT ELEVATION 586.5  
OCTOBER 2019



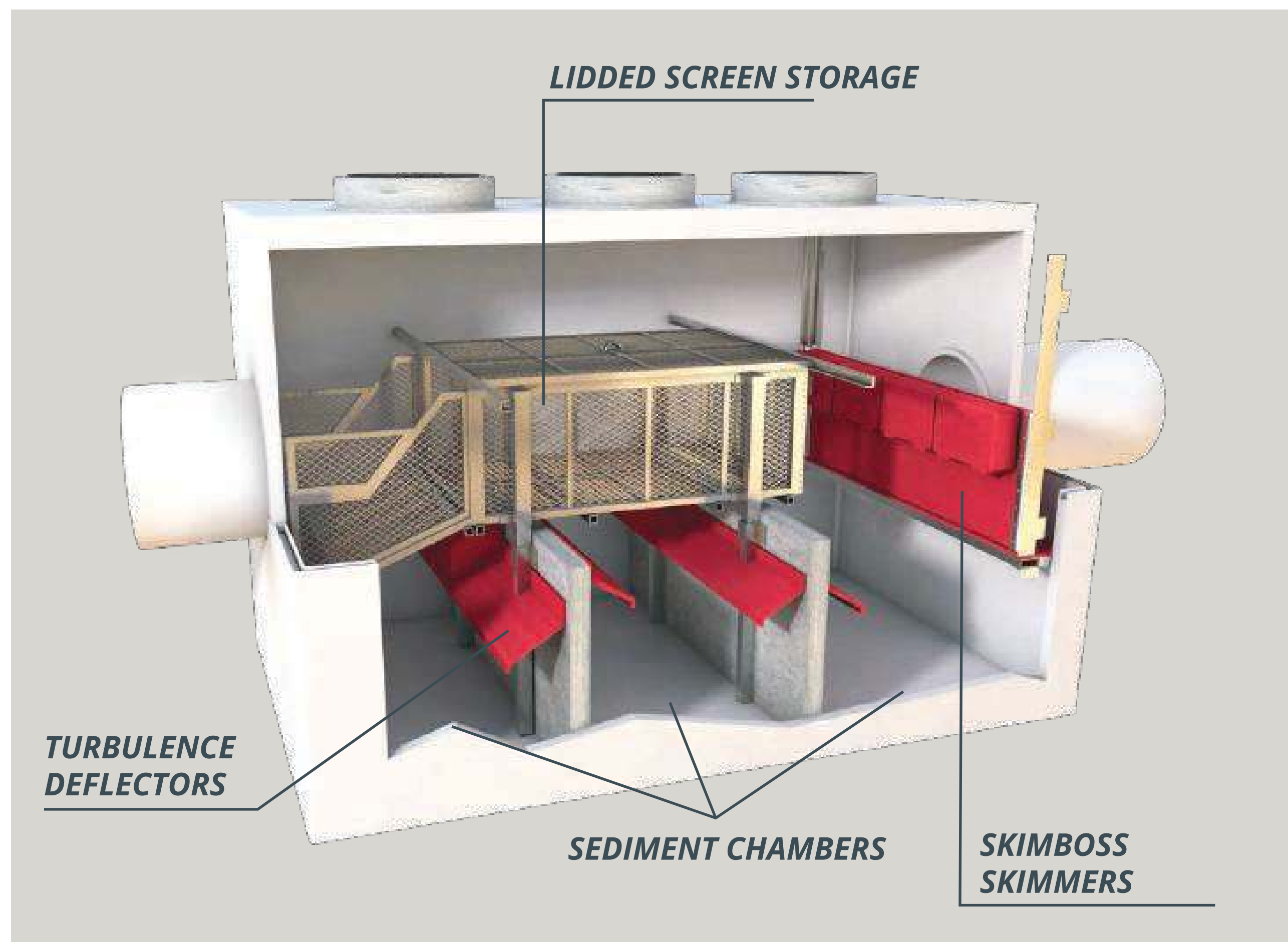
# Elder | Phase One Stomwater Relocated











## NUTRIENT SEPARATING BAFFLE BOXES

- BOTH BOXES ARE MULTI-STAGED SELF CONTAINED TREATMENT SYSTEMS
- EACH SUBSEQUENT COMPONENT WITHIN THE SYSTEM PROTECTS PRIOR STAGES FROM CLOGGING ISSUES OR FAILURES
- THESE STAGES INCLUDE FILTRATION, HYDRODYNAMIC SEPARATION AND HYDROCARBON ABSORPTION
- REMOVAL RATES ARE 20% NITROGEN, 19% PHOSPHOROUS, 90% TSS
- THE KEY REMOVAL RATE IS SEDIMENT, AS SEDIMENT IS KNOWN TO "CARRY" OTHER POLLUTANTS FOR A RIDE
- REMOVAL OF THE VEHICLE IN THIS CASE IS ESSENTIAL TO POLLUTANT REMOVAL IN STORMWATER RUNOFF
- THESE UNITS CAPTURE THOUSANDS OF POUNDS OF DEBRIS, SEDIMENT, AND NUTRIENTS
- THE PREVIOUS OUTFALL CONFIGURATION DID NOT HAVE WATER QUALITY TREATMENT

