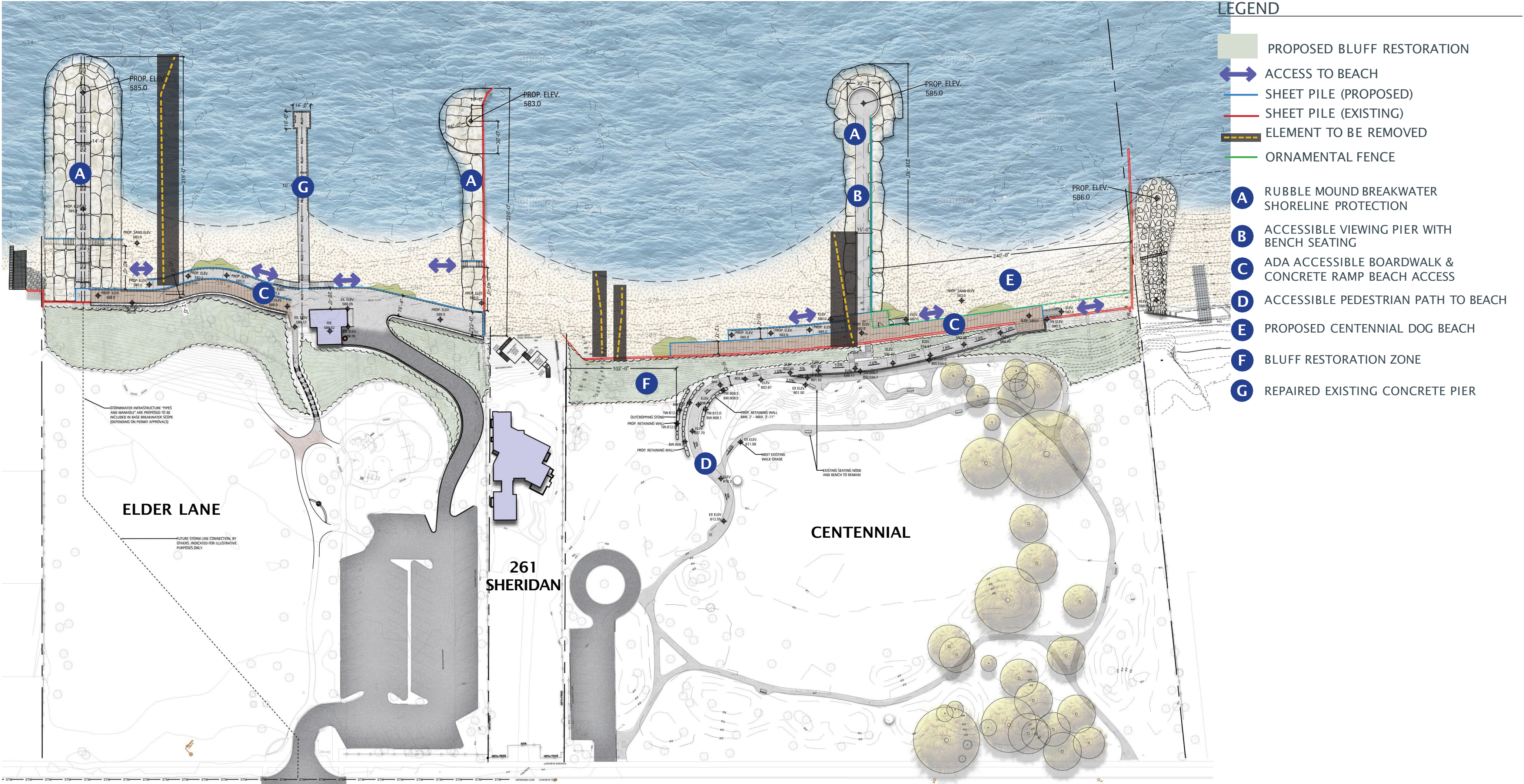


Elder + Centennial | Schematic Design



Elder + Centennial | Final Schematic Design

SCALE: 1"=40'
0 20' 40' 80' NORTH

10/19/2023

- LEGEND
- PROPOSED BLUFF RESTORATION

ACCESS TO BEACH

SHEET PILE (PROPOSED)

SHEET PILE (EXISTING)

ELEMENT TO BE REMOVED

ORNAMENTAL FENCE

A

RUBBLE MOUND BREAKWATER
SHORELINE PROTECTION

B

REPAIRED EXISTING CONCRETE PIER

C

ADA ACCESSIBLE CONCRETE RAMP
BEACH ACCESS

D

ADA ACCESSIBLE BOARDWALK

E

CONCRETE SEATWALL

F

BLUFF RESTORATION ZONE
- The map illustrates the Elder Enlargement project, showing the intersection of Elder Lane and 261 Sheridan. Key features include:

 - Proposed Bluff Restoration:** Indicated by light green shaded areas along the shoreline.
 - Access to Beach:** Marked with blue double-headed arrows at various points along the beach.
 - Sheet Piles:** Proposed sheet piles are shown as blue lines, and existing sheet piles as red lines.
 - Elements to be Removed:** Indicated by dashed yellow lines.
 - Ornamental Fence:** Shown as a green line.
 - Infrastructure:** Includes a rubble mound breakwater (A), a repaired existing concrete pier (B), an ADA accessible concrete ramp (C), an ADA accessible boardwalk (D), a concrete seatwall (E), and a bluff restoration zone (F).
 - Elevations:** Various elevations are noted, such as PROP. ELEV. 585.0, PROP. SAND ELEV. 582.0, and EX. ELEV. 589.17.
 - Stormwater Infrastructure:** Pipes and manholes are proposed to be included in the rock breakwater scope.
- ## Elder Enlargement| Final Schematic Design
- SCALE: 1"=20'
0 10' 20' 40' NORTH
- 10/19/2023
- THE
LAKOTA
GROUP.
© 2023 THE LAKOTA GROUP

LEGEND

PROPOSED BLUFF RESTORATION

ACCESS TO BEACH

SHEET PILE (PROPOSED)

SHEET PILE (EXISTING)

ELEMENT TO BE REMOVED

ORNAMENTAL FENCE

A

RUBBLE MOUND BREAKWATER
SHORELINE PROTECTION

B

ACCESSIBLE VIEWING PIER WITH
BENCH SEATING

C

ADA ACCESSIBLE BOARDWALK

D

ADA ACCESSIBLE CONCRETE RAMP
BEACH ACCESS

E

PROPOSED CENTENNIAL DOG BEACH

F

BLUFF RESTORATION ZONE

G

ACCESSIBLE PEDESTRIAN PATH & RAMP
TO BEACH

