

Winnetka Park District Elder/Centennial Breakwater Project

June 2, 2021

Kenilworth Beach (public)



Kenilworth Beach (public)

- South side of Beach
 - 4' Chain link fencing
 - 75' in length
 - No public access south of beach
 - Signage
 - No Trespassing
 - Violators will be prosecuted
 - Kenilworth Village Code 05.01



Kenilworth Beach (public)

- North Properties between Kenilworth Beach and Centennial Beach
 - 16 properties separating the two
 - 14 stone revetments
 - 6 steel groins
 - 2 beaches with sand to traverse



Glencoe Beach (public)

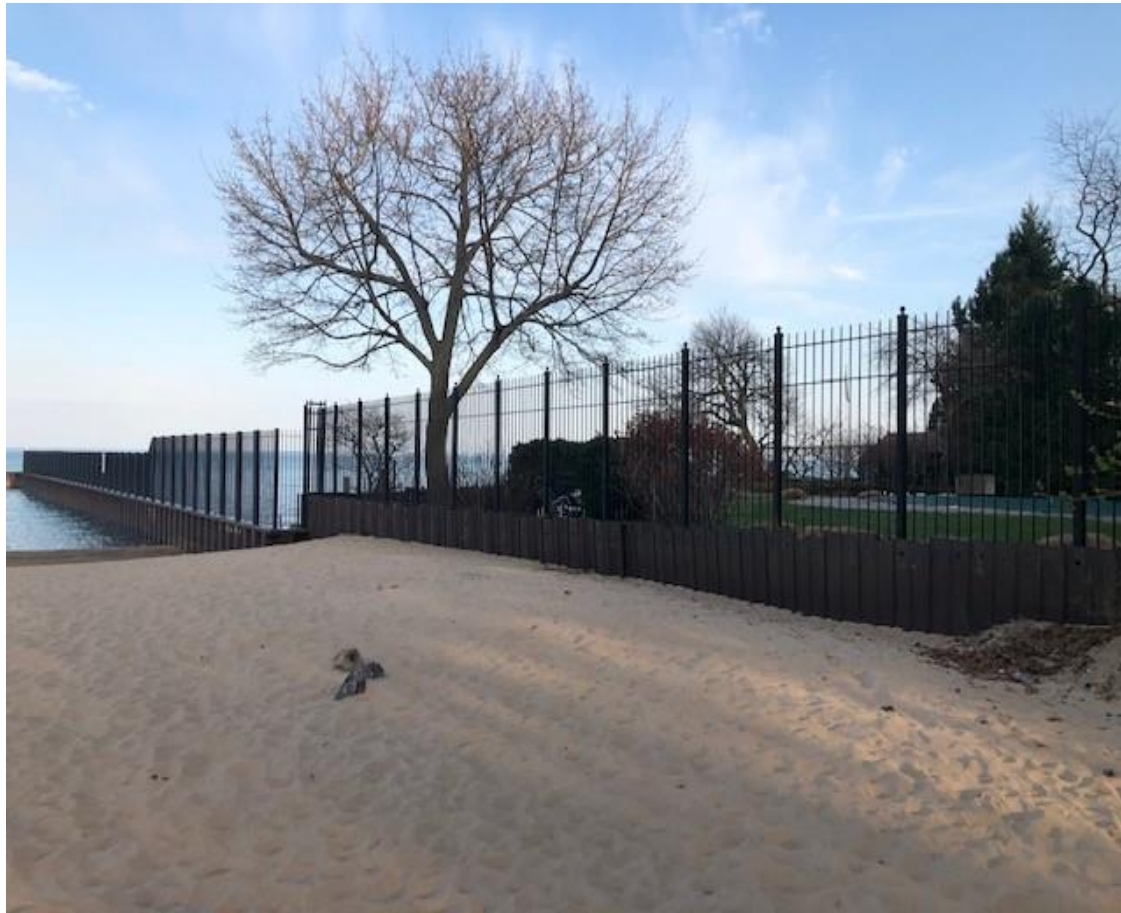


Glencoe Beach (public)

- South Side of Beach
 - 4' white metal fencing
 - 320' in length
 - No public access south of beach
 - Signage
 - Private Beach
 - Climbing Fence Prohibited



Evanston Lee Street Beach (public)



Evanston Lee Street Beach (public)

- South side of Beach
 - 6'-8' Metal fencing
 - 260' in length
 - No public access south of beach
 - Signage
 - No Trespassing
 - Keep Off



Sunrise Beach Lake Bluff (public)

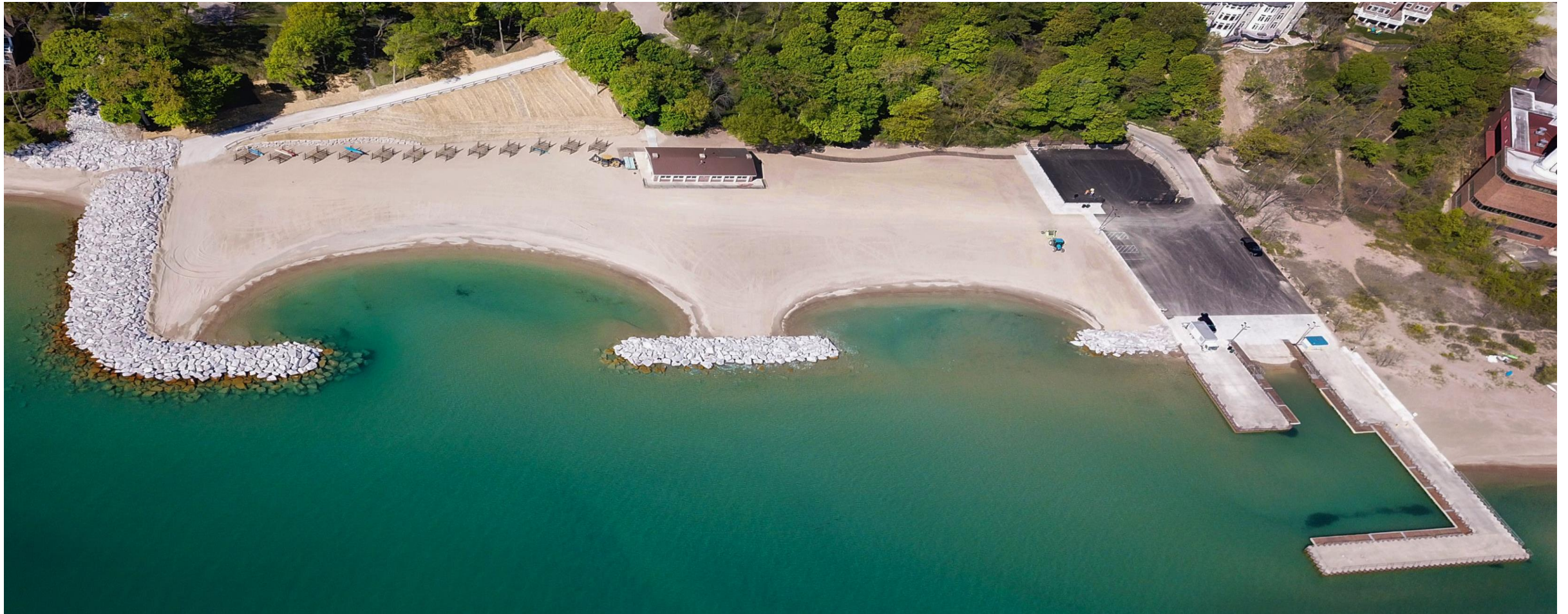


Sunrise Beach Lake Bluff (public)

- South side of Beach
 - 4' Chain link fencing
 - 50' in length
 - No public access south of beach



Lloyd Beach Winnetka (public)



Lloyd Beach Winnetka (public)

