



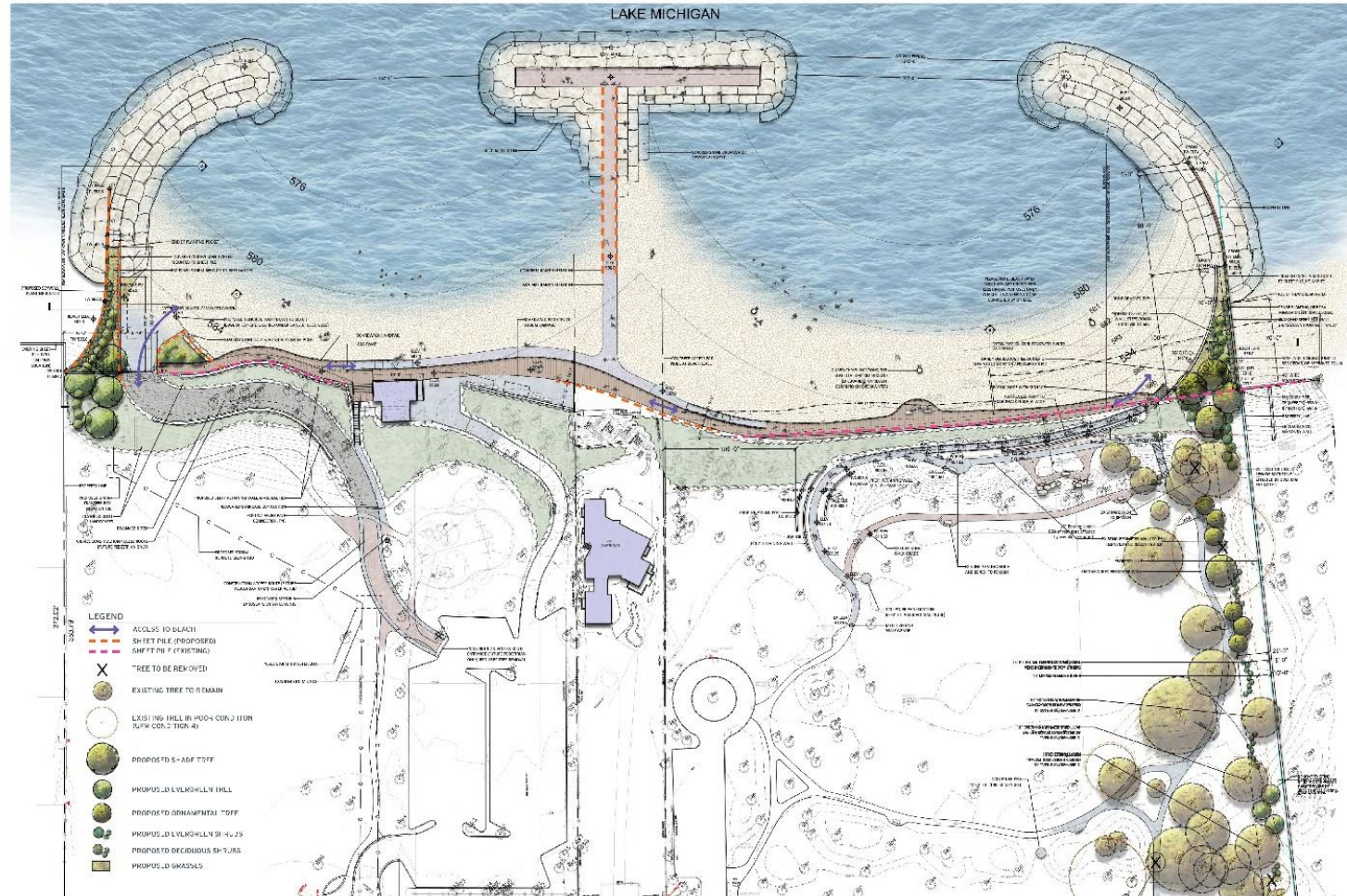
Winnetka Park District

Committee Meeting

September 9, 2021

Elder & Centennial Design Development Plan Review

Elder & Centennial Design Development Plan



ELDER/CENTENNIAL BREAKWATER SCREEN
ELDER & CENTENNIAL DESIGN DEVELOPMENT | OVERALL PLAN

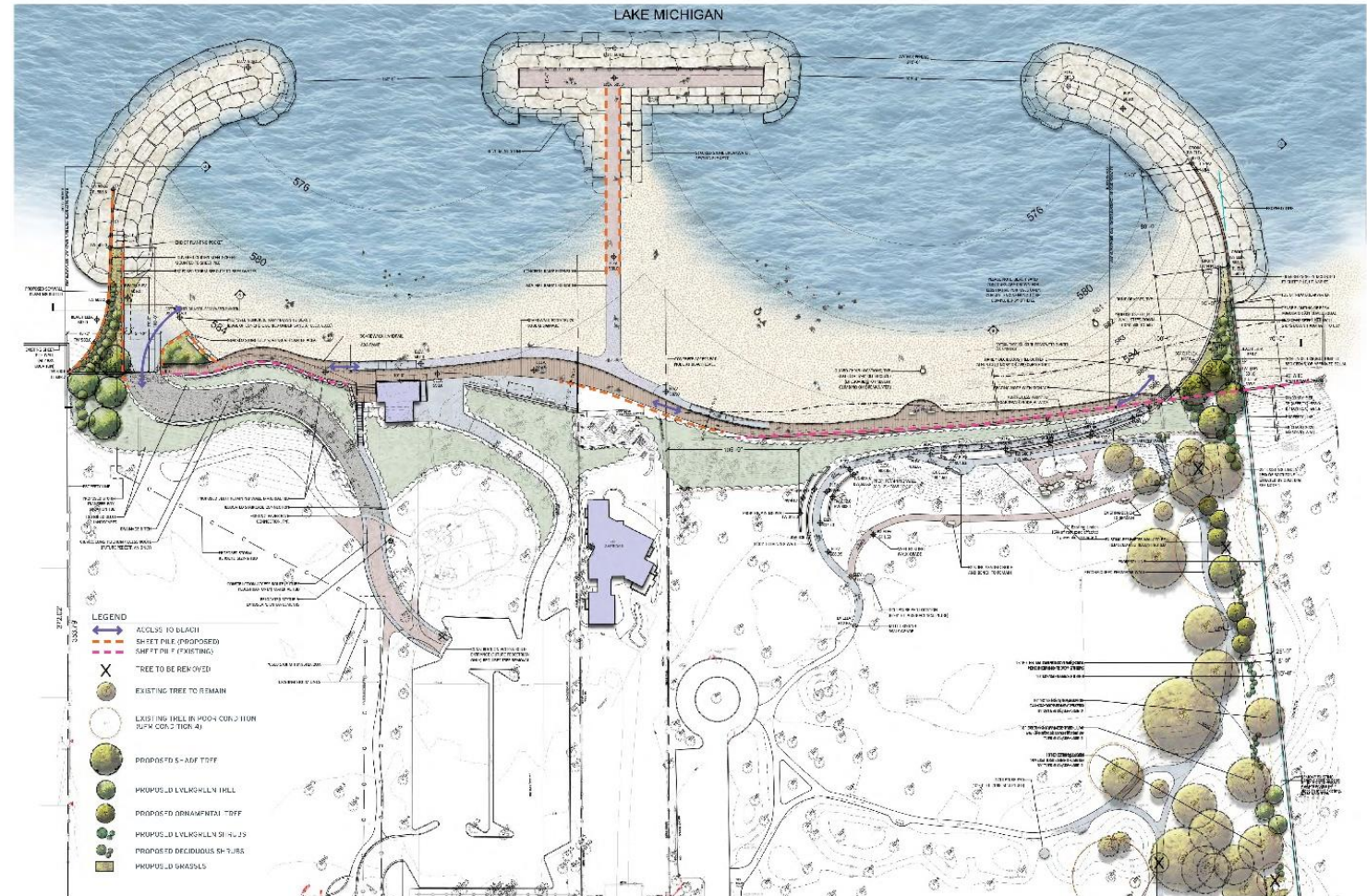
SCALE: 1" = 40'
DATE: SEPTEMBER 9, 2021

PREPARED FOR:
THE LAKOTA GROUP

Elder & Centennial Plan Components

These major components are required to build back the infrastructure to create the vision that imagined in the Winnetka Waterfront 2030 Plan

- Breakwaters with planter pockets
- Center Island “T” pier and walkway
- Sand nourishment
- Relocated stormwater discharge
- Elder north access route
- Bluff Restoration



ELDER/CENTENNIAL BREAKWATER SCREEN

ELDER & CENTENNIAL DESIGN DEVELOPMENT | OVERALL PLAN

WINNETKA, ILLINOIS

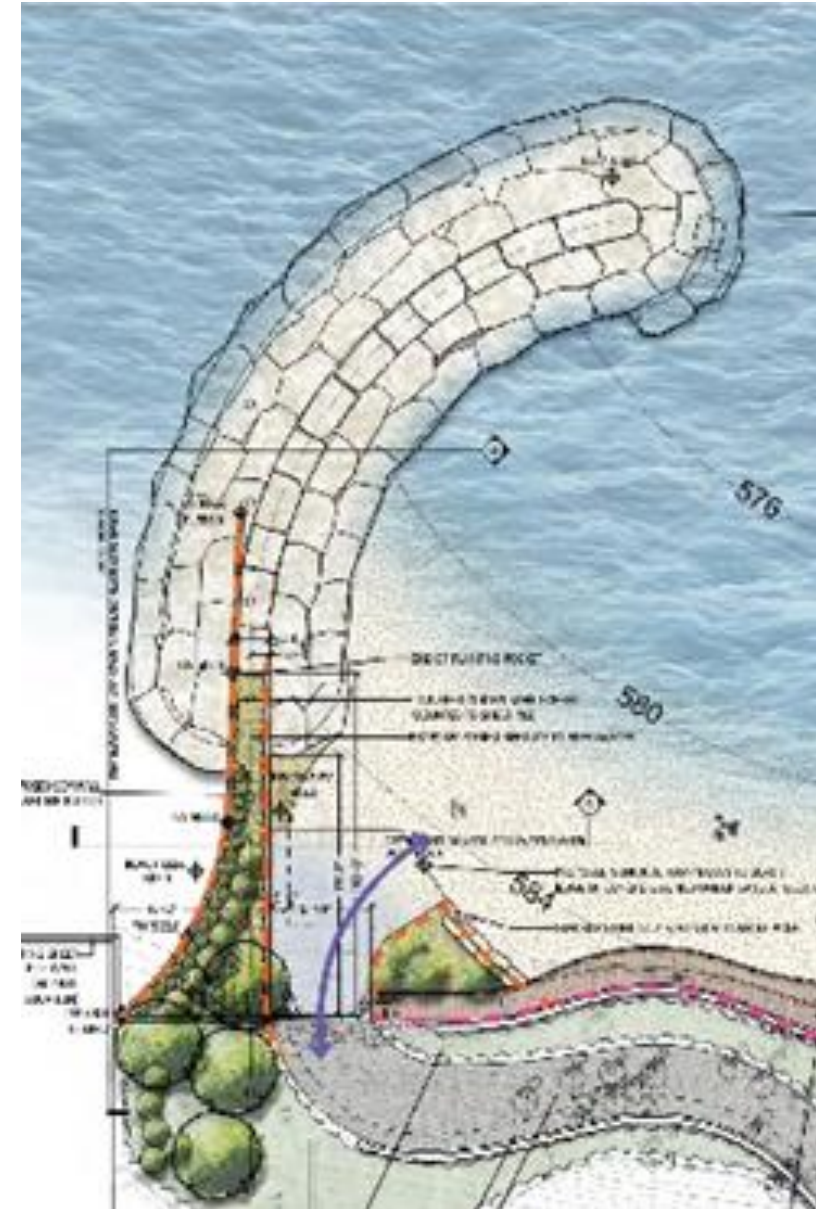
SCALE: 1" = 40'-0"
PROJECT TEAM:
LAKOTA GROUP
SEPTEMBER 9, 2017

THE LAKOTA GROUP

Elder Breakwater with Planter Pockets

Overview

- Reduces the stone required
- Softens the feel of the beach
- Increases the amount of beach that can be used vs. traditional stone breakwaters
- Creates areas for plantings on the beach
- Reduces safety risks/concerns
- Provides infrastructure to secure stormwater discharge pipe



Centennial Breakwater with Planter Pockets

Overview

- Reduces the stone required
- Softens the feel of the beach
- Increases the amount of beach that can be used vs. traditional stone breakwaters
- Creates areas for plantings on the beach
- Reduces safety risks/concerns



Elder & Centennial Center Island “T”

Overview

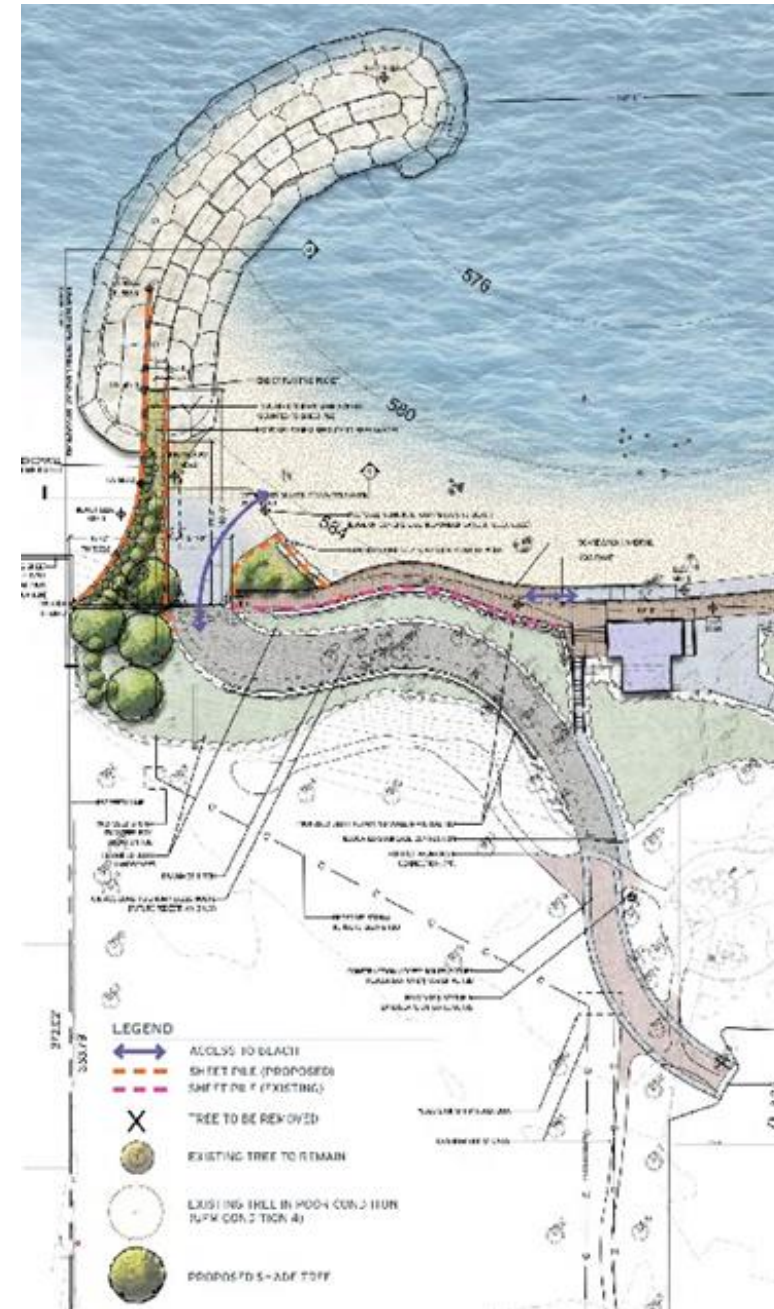
- Creates the separation of the two beaches and adds the protection to maintain the two bay system
- Replaces the previous pier which is failing
- A destination for users to enjoy the pier
- Stacked stone seating/lounging element
- Designed to be ADA accessible



Elder Relocated Stormwater Discharge

Overview

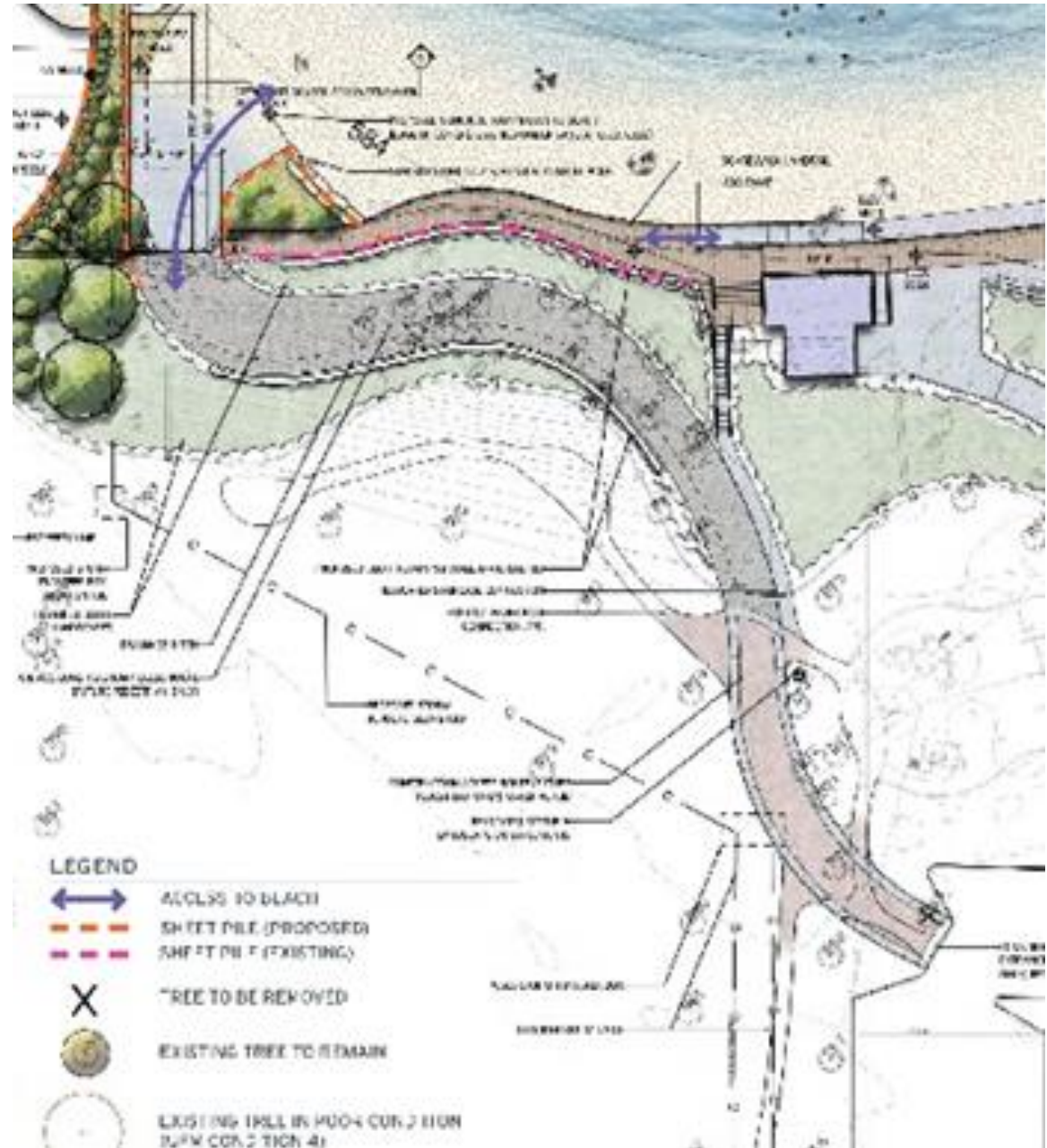
- Replaces the damaged infrastructure
- Will provide stormwater to be discharged further away from the swimming beach
- Will help improve on water quality



Elder North Access Route

Overview

- Allows for a land based operation vs marine based
- Creates a norther access route for patrons to bring there non-motorized watercraft (kayaks, paddle boards, etc.)
- Doubles as a maintenance access and construction access



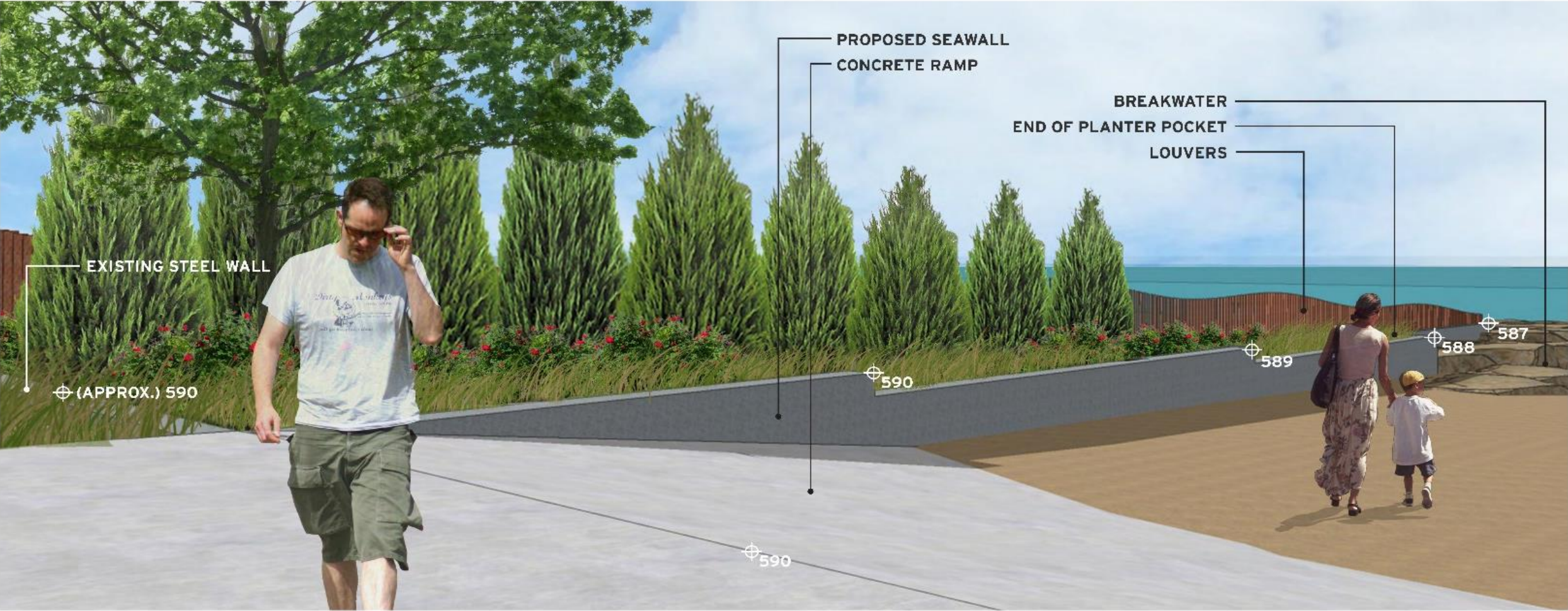
Elder & Centennial Bluff Restoration

Overview

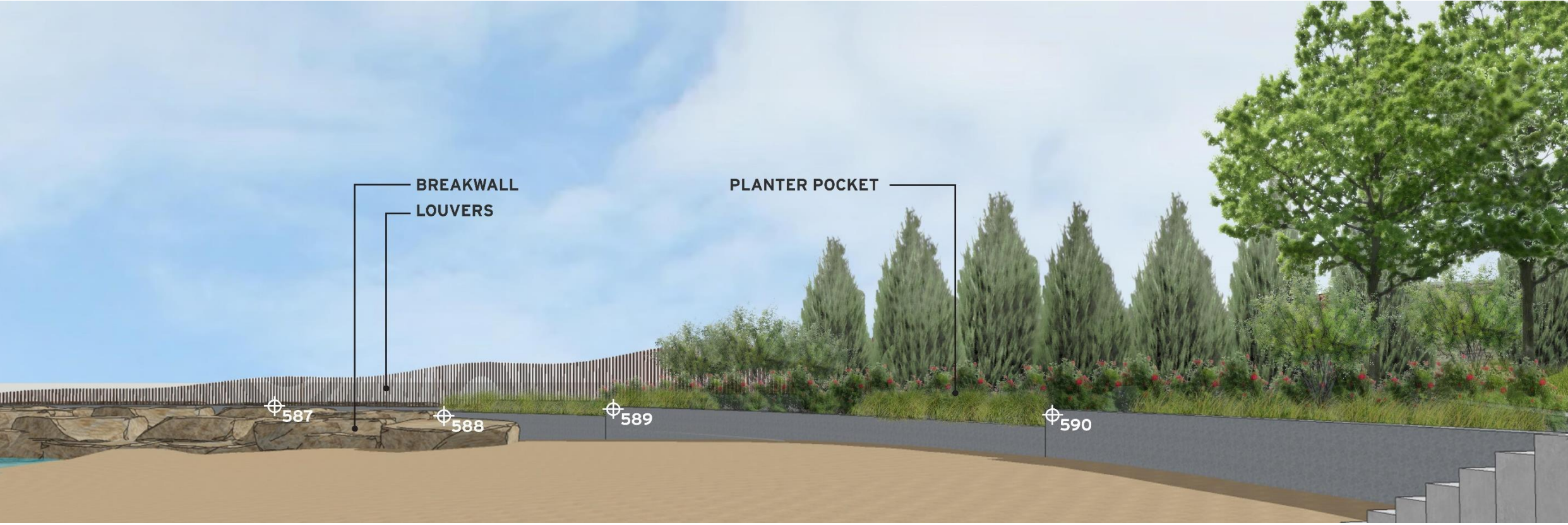
- Selective clearing of invasive species
- Replanting and over seeding of native species
- Opens up the bluffs and will help to create clear views to Lake Michigan



Elder Planter Pocket & Breakwater

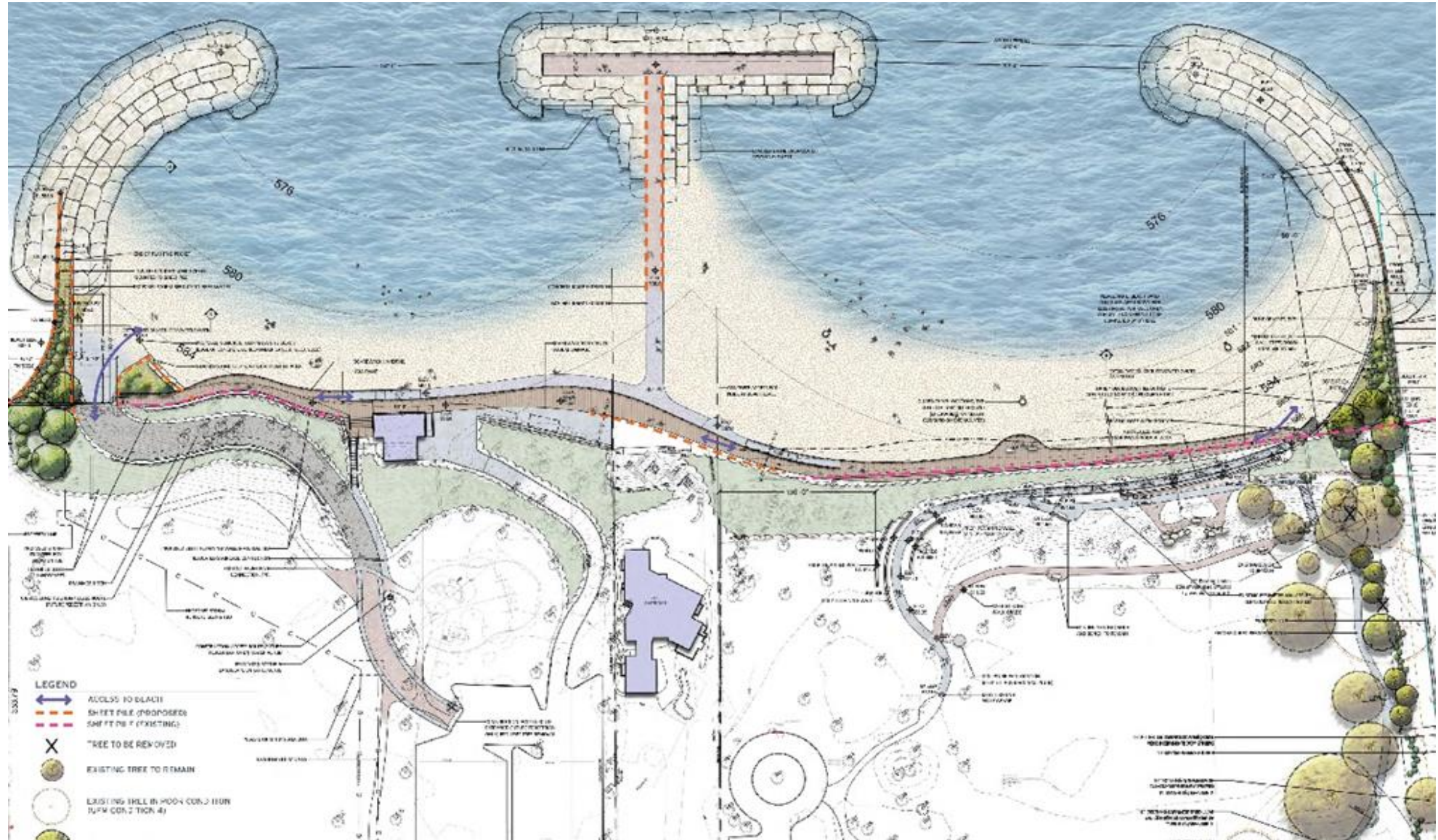


Centennial Planter Pocket & Breakwater



Elder & Centennial Plan Secondary Components

- ADA access
- Continuous boardwalk



Lloyd Centennial Breakwater Comparison



Questions?