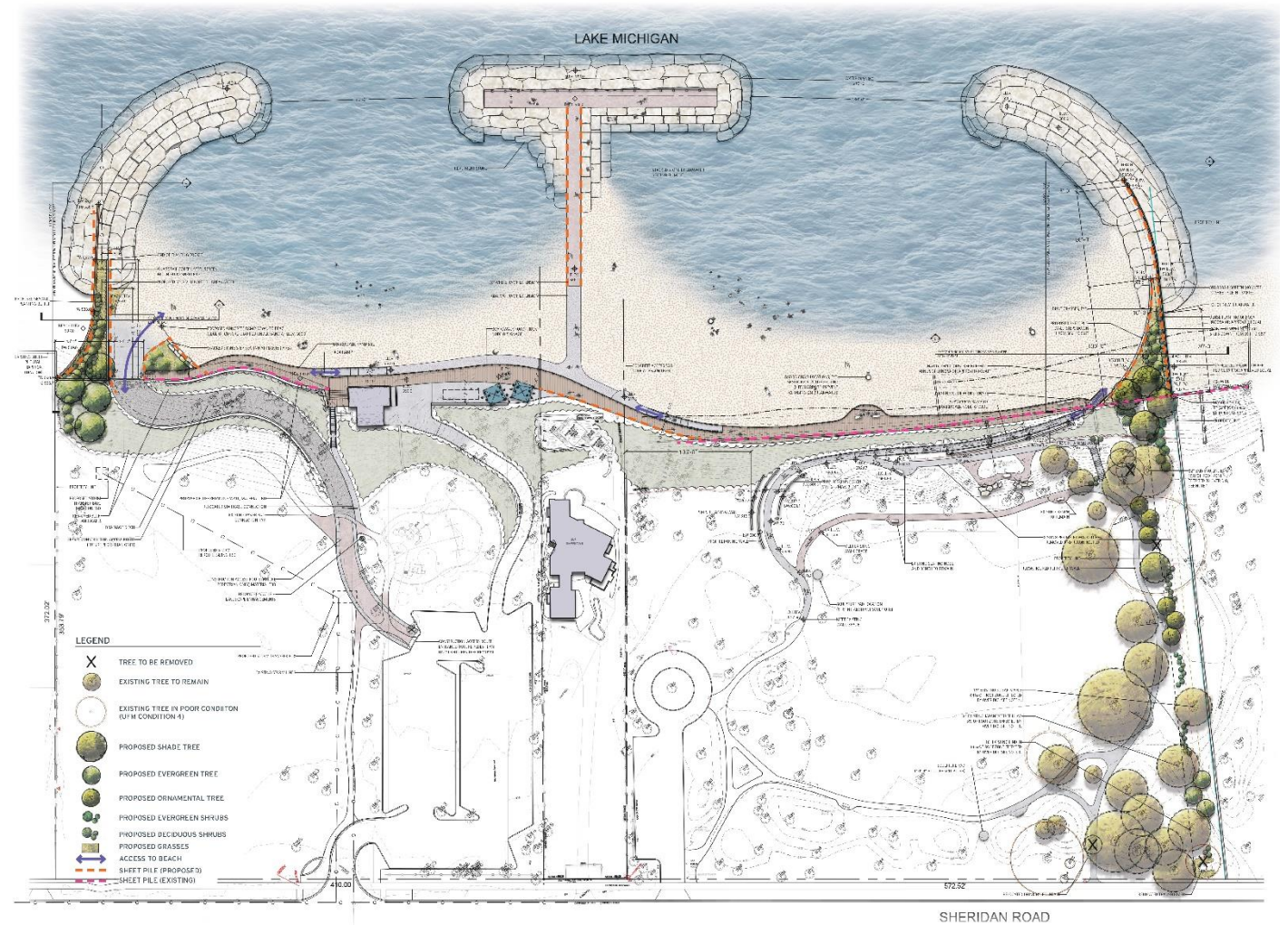






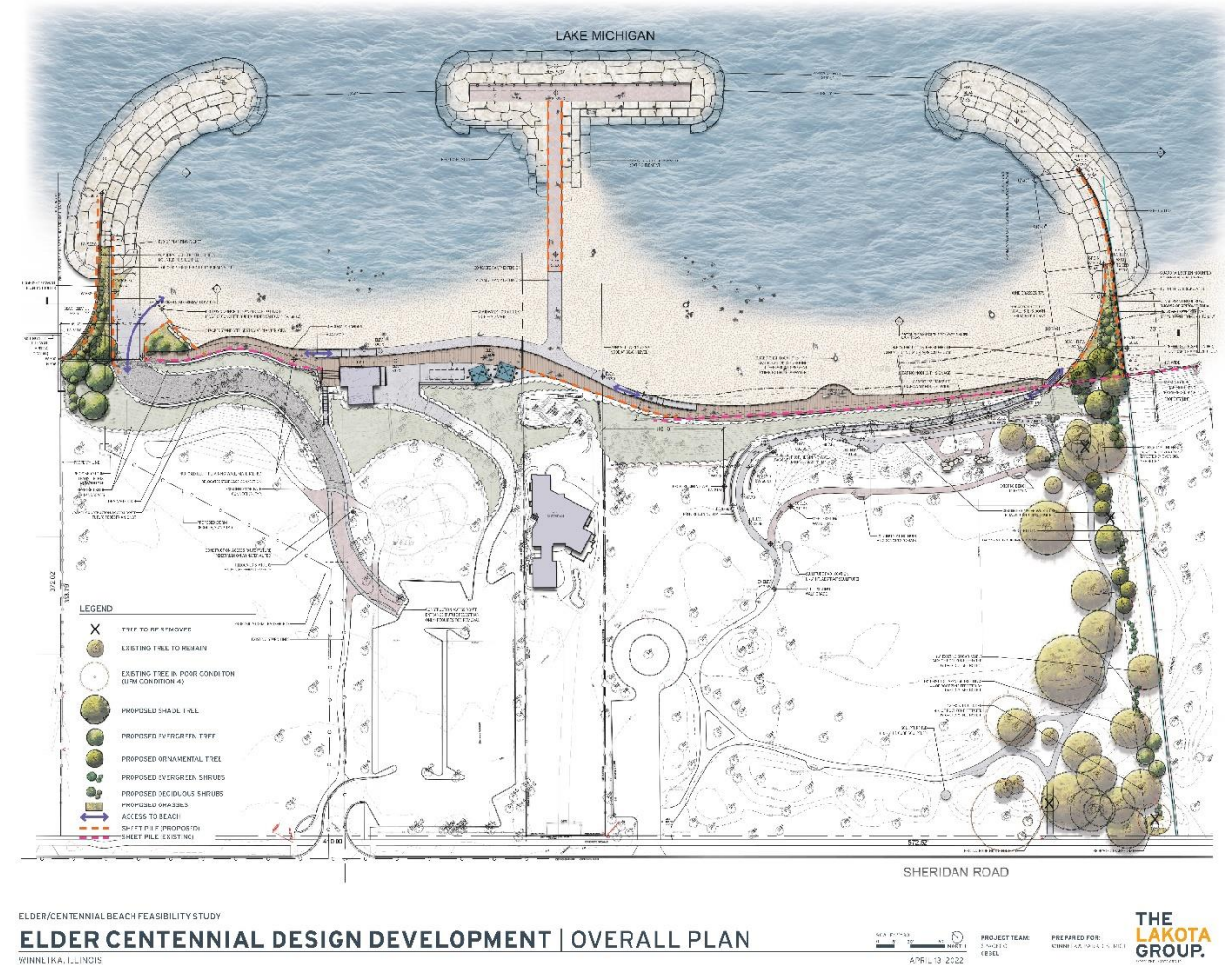
# Elder Lane + Centennial Design Development Plan





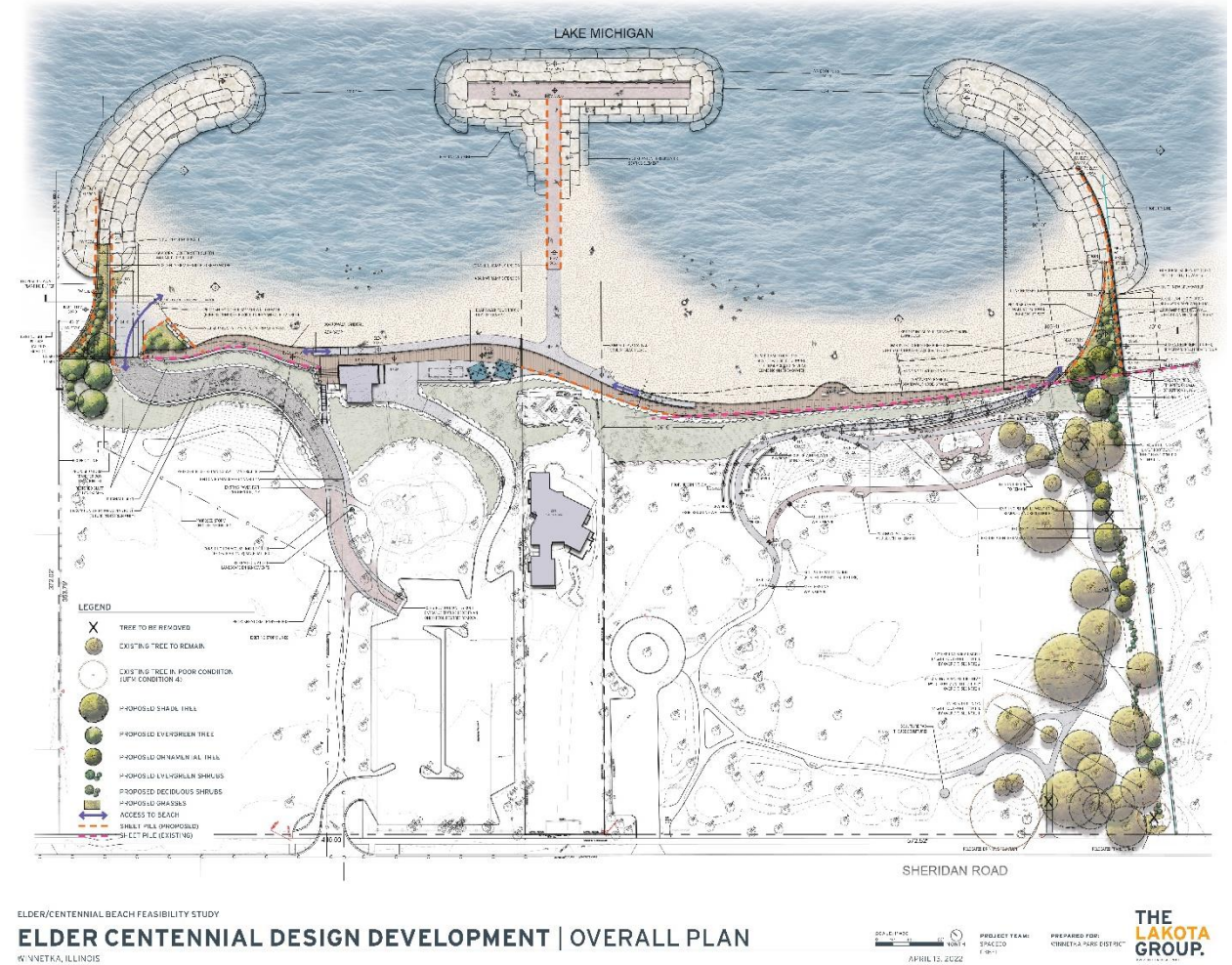
# Elder Lane + Centennial Implementation Sequencing Phase 1

- Two Cell Breakwater system with planting pockets and louvers
- North access/maintenance road
- ADA access Centennial Park
- Bluff Restoration, Landscaping
- Relocated stormwater outfall
- Timeline (August/September 2022 – July 2023 estimated)



# Elder Lane + Centennial Implementation Sequencing

- First step is to secure all permits for the project (anticipated August 2022)
- Construction Documents (CDs)
- Project Bidding (June 2022)
- Bid Approvals (July/August 2022)
- Secure the Project site (Aug/Sept 2022)
- Mobilization

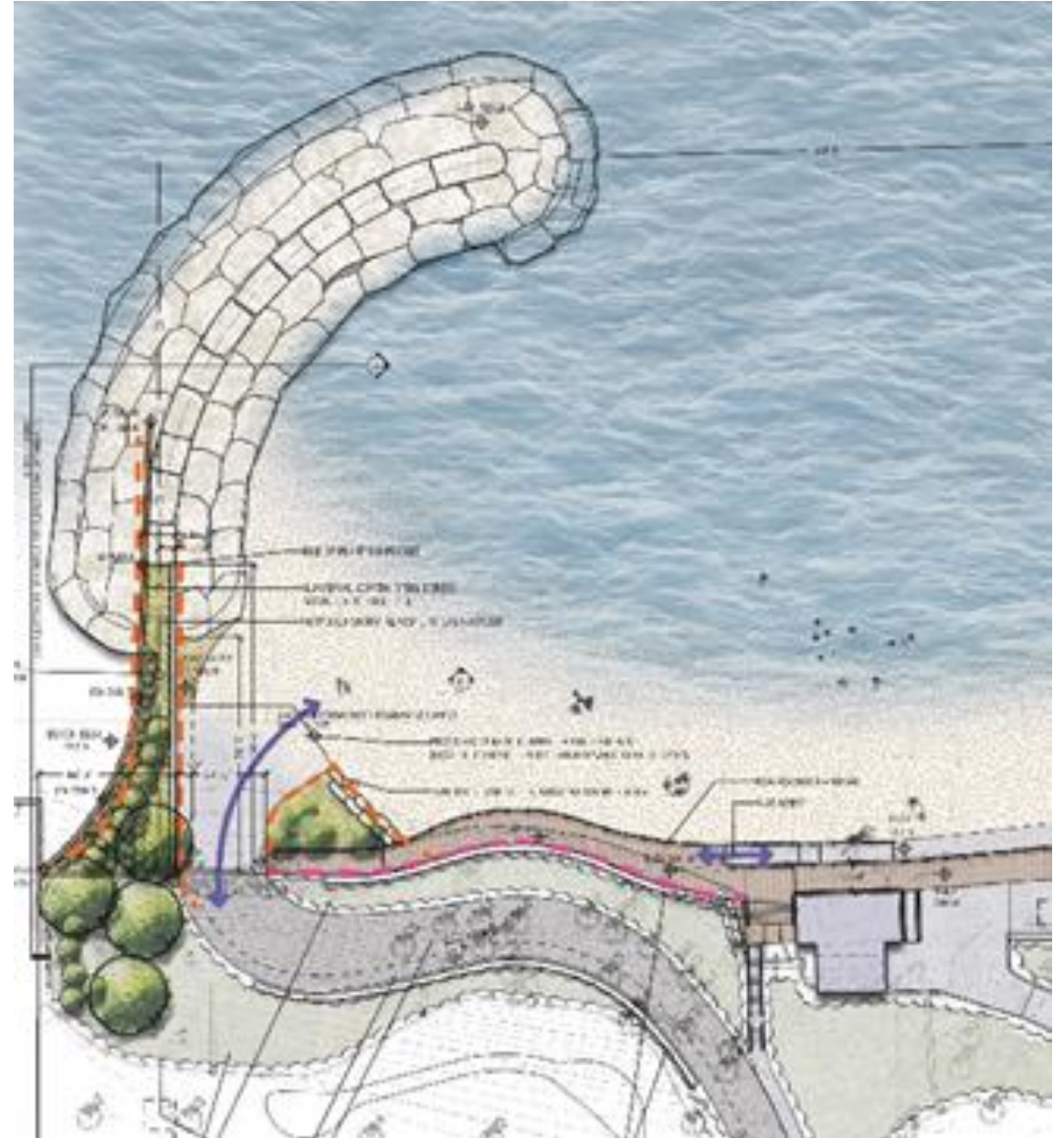




- [illegible]

# Elder Lane Breakwater with Planter Pockets

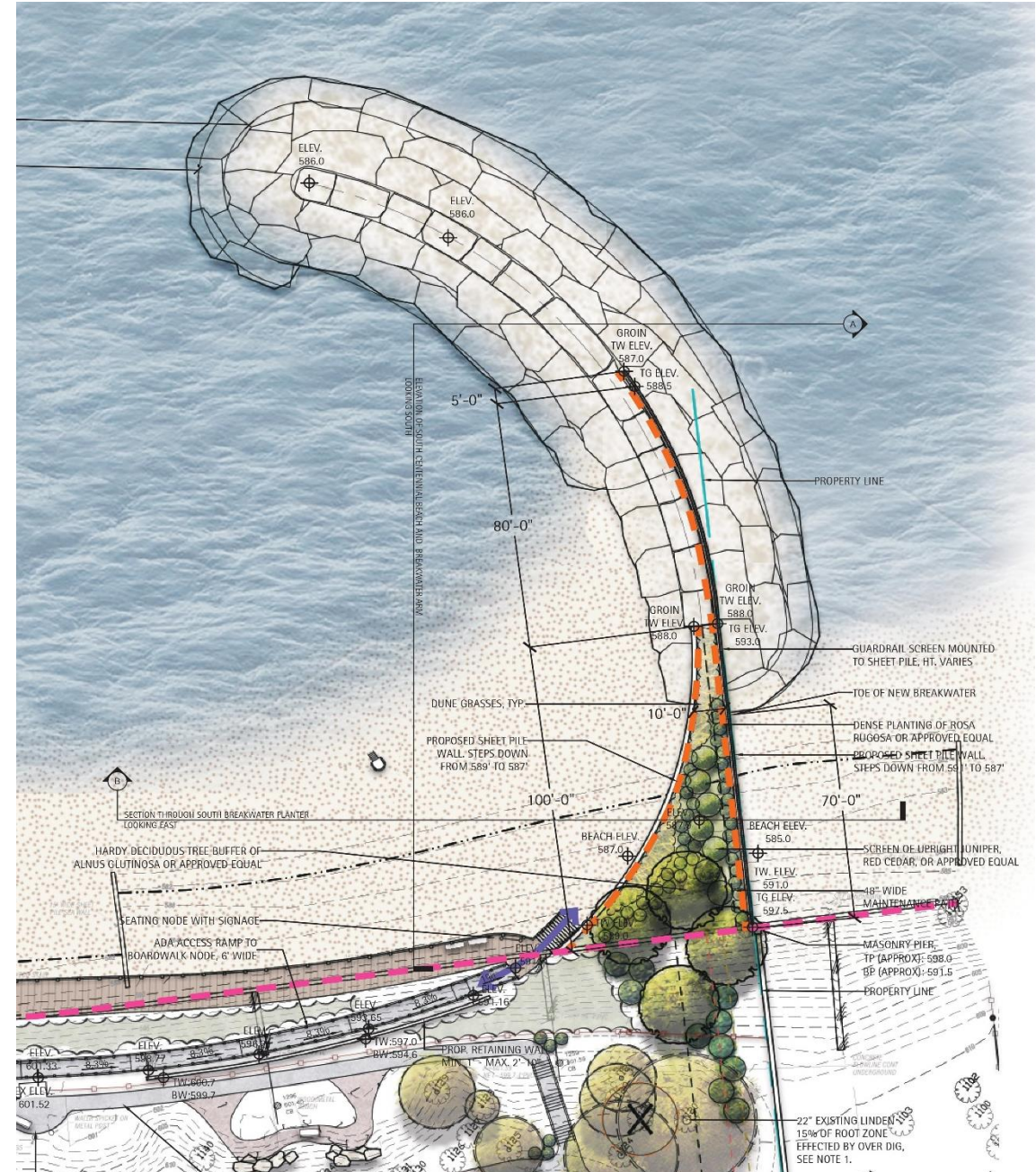
- Buildout off the construction access road
- Establishing the northern boundaries of Elder to deliver materials (stone, steel, etc.)
- Installation of steel sheeting and breakwater structure
- Steel louvers would be installed once steel sheeting and the breakwaters are completed
- From there a beach will be established to start traversing south towards Centennial Beach





# Centennial Breakwater with Planter Pockets

- As with Elder's structure, Centennial's structure would be similar
- Installation of the steel sheeting
- Placement of the armour stone for the breakwater structure
- Steel louvers would be installed once steel sheeting and the breakwaters are completed
- And working back north with sand to fill the beach





# Centennial ADA access Ramp & Bluff Restoration

- Installation of the ADA access ramp from Centennial Park down to the Beach Level and future connection to the Phase 2 Boardwalk
- Additional improvements:
  - Bluff Restoration (Elder/Centennial)
  - Relocated drinking fountain
  - Circulation walkways
  - Landscaping and park grading work
  - Installation of all planting material



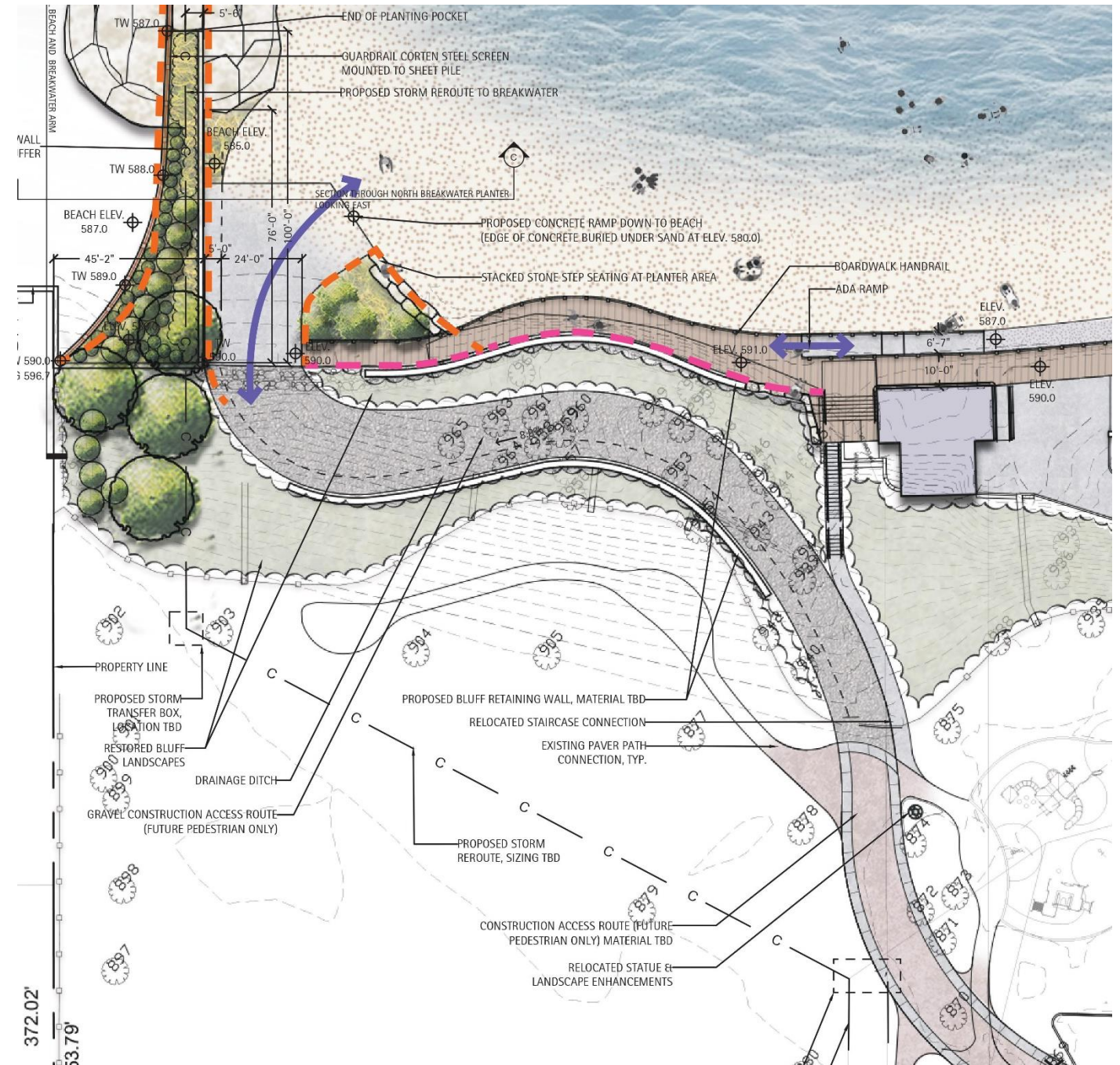


-



# Elder Lane North Access Route

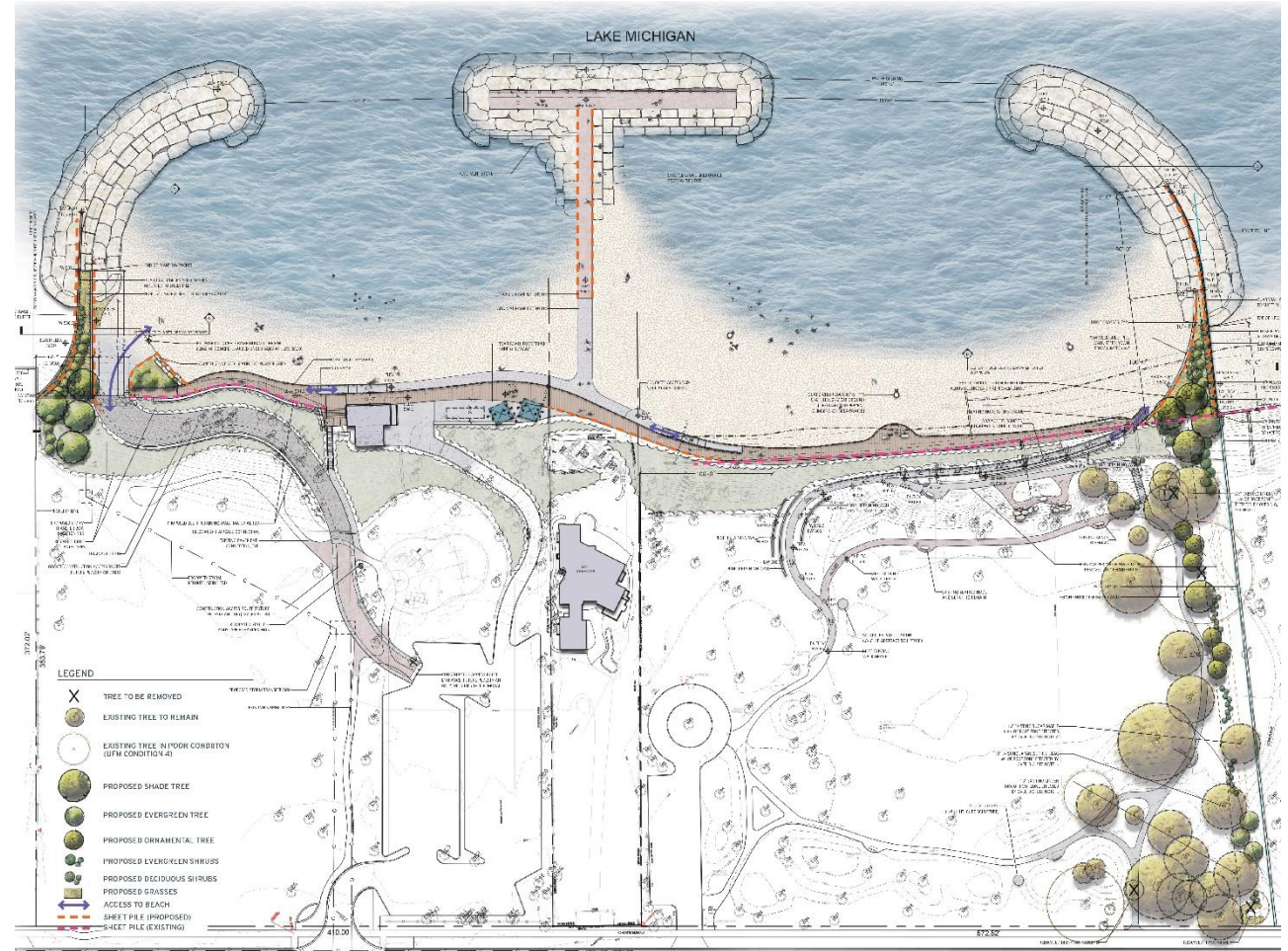
- Once all of the beach based construction is completed crews will turn to finish out the project with the finishing components
- Installation of the concrete access ramp
- Final design of the roadway and walkway
- Access staircase to Elder Beach House





# Elder Lane + Centennial Implementation Sequencing Phase 1

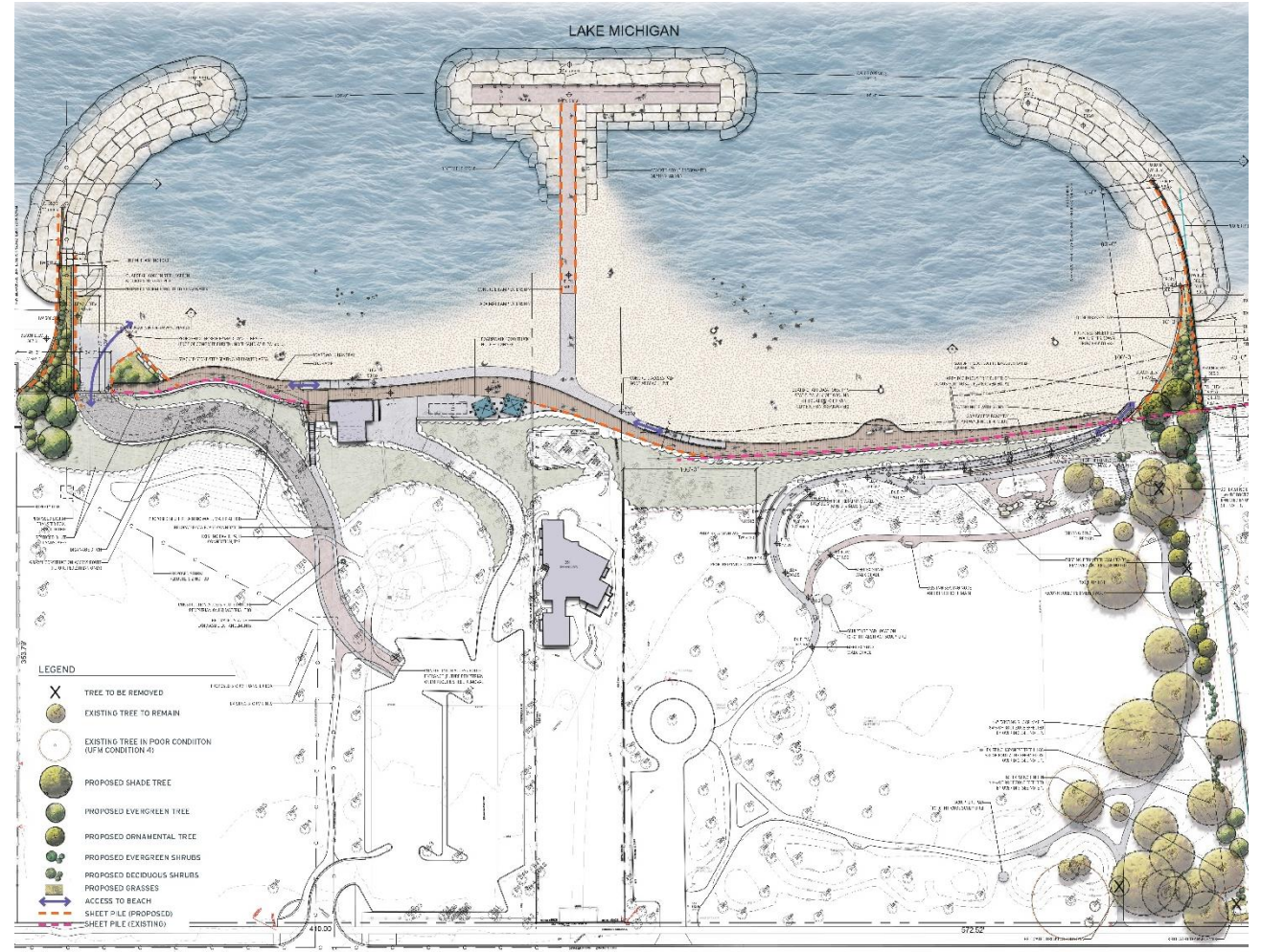
- Consideration for Centennial Dog Beach before and during construction
- Staff will try to accommodate dog beach pass holders as long as possible through the 2022 season, and possibly even into the 2023 season (This is all contingent on construction progress and if safe conditions)





# Elder Lane + Centennial Implementation Sequencing Phase 2

- Continuous Boardwalk with seating pockets and further access to the beach
- Concessions and patio area
- As funds become available the WPD will be looking to implement Phase 2
- Timeline (TBD)







DAVID WALKER ARCHITECTURAL VISUALIZATIONS 2022



## View of Elder Post Phase 2 Construction



# Questions