



Elder Lane + Centennial Beach Project Timeline

TIMELANE IS BASED ON WHAT WE KNOW CURRENTLY +
THE APPROVAL PROCESS AS OF MARCH 2023

Elder Lane Park + Beach | Phase One

- Plan review + design | *1ST OR 2ND QUARTER 2023*
- Review + presentation for Park Board approval | *2ND QUARTER 2023*
- Permit review + submittal | *2ND QUARTER 2023*
- Permit review process | *2ND QUARTER 2023 (CAN BE A 6 - 18 MONTH PROCESS)*
- Final plan + review process | *3RD QUARTER 2023 (ANTICIPATED)*
- Bid review + presentation for Park Board approval | *3RD OR 4TH QUARTER 2023*
- Construction | *4TH QUARTER 2023, WILL RUN THROUGH 3RD QUARTER 2024 (ANTICIPATED)*

Centennial Park + Beach | Phase One

- Plan review + design | *2ND QUARTER 2023*
- Review + presentation for Park Board approval | *2ND QUARTER 2023*
- Permit review + submittal | *2ND OR 3RD QUARTER 2023*
- Permit review process | *2ND OR 3RD QUARTER 2023 (CAN BE A 6 - 18 MONTH PROCESS)*
- Final plan + review process | *3RD QUARTER 2023 (ANTICIPATED)*
- Bid review + presentation for Park Board approval | *3RD OR 4TH QUARTER 2023*
- Construction | *4TH QUARTER 2023, WILL RUN THROUGH 3RD QUARTER 2024 (ANTICIPATED)*

Centennial Park + Beach | Phase Two

- Contingent upon funding

Elder Lane + Centennial Beach | Phase Three Beach Unification

- Contingent upon acquisition of 261 Sheridan Road + funding

Elder + Centennial | Phase One

ELDER | CENTENNIAL
BEACH FEASIBILITY STUDY



LEGEND

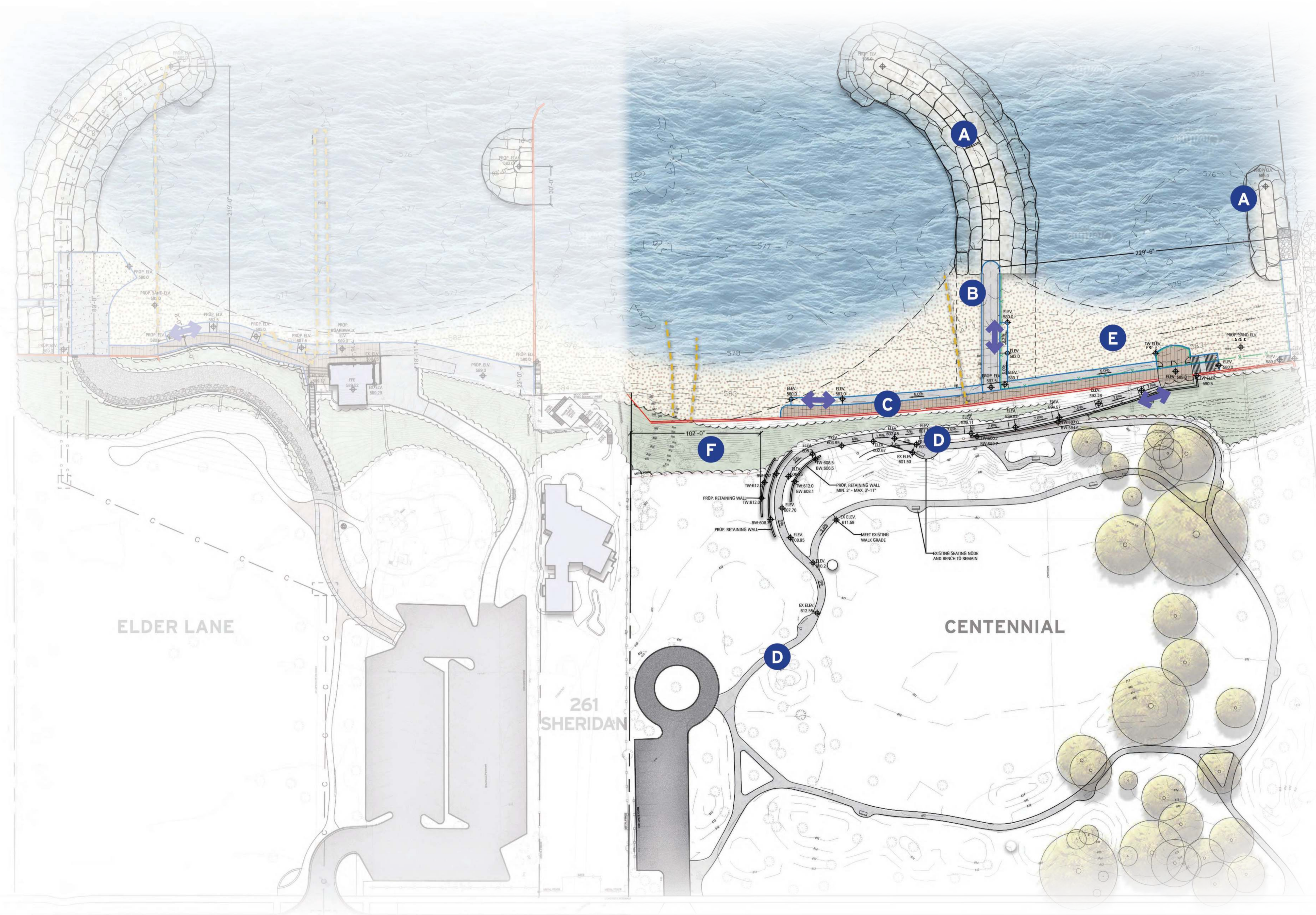
- PROPOSED BLUFF RESTORATION
 - ACCESS TO BEACH
 - SHEET PILE (PROPOSED)
 - SHEET PILE (EXISTING)
 - ITEM TO BE REMOVED
-
- A** STONE BREAKWATER SYSTEM
SHORELINE PROTECTION
 - B** PROPOSED STORMWATER REROUTE
 - C** CONSTRUCTION ACCESS ROUTE
(FUTURE PEDESTRIAN ONLY)
 - D** ACCESSIBLE PEDESTRIAN PATH
TO BEACH
 - E** PROPOSED CENTENNIAL DOG BEACH
 - F** BOARDWALK AND BEACH ACCESS
 - G** PAD FOR FOOD TRUCKS AND SEATING
 - H** BLUFF RESTORATION

SCALE: 1"=40'
0 20' 40' 80' NORTH

DRAFT PLAN 3/18/2023

Elder + Centennial | Phase Two

ELDER | CENTENNIAL BEACH FEASIBILITY STUDY



LEGEND

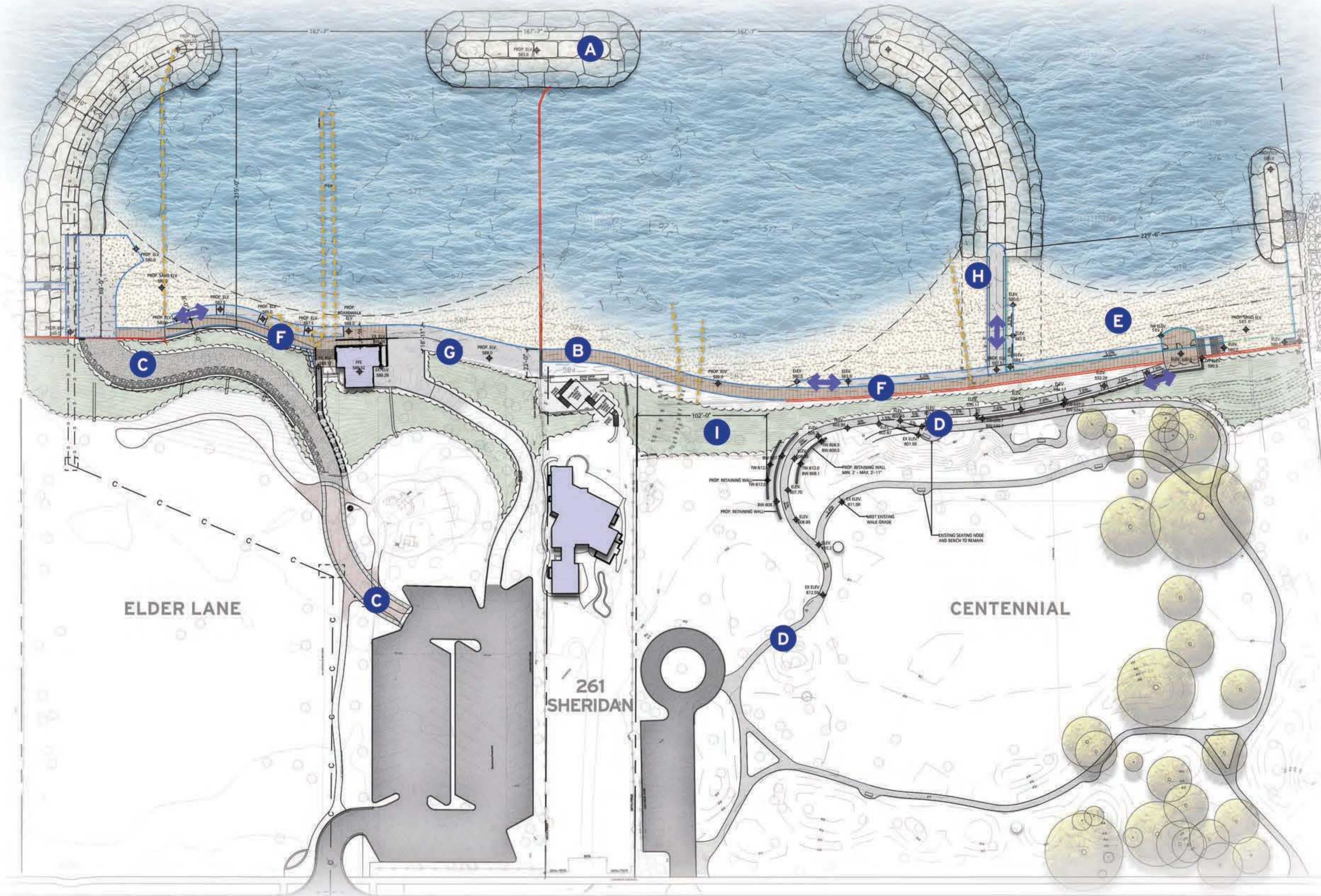
- PROPOSED BLUFF RESTORATION
- ACCESS TO BEACH
- SHEET PILE (PROPOSED)
- SHEET PILE (EXISTING)
- ITEM TO BE REMOVED

- A** STONE BREAKWATER SYSTEM
SHORELINE PROTECTION
- B** ACCESSIBLE VIEWING PIER WITH
BENCH SEATING
- C** ACCESSIBLE BOARDWALK + BEACH ACCESS
- D** ACCESSIBLE PEDESTRIAN PATH
TO BEACH
- E** PROPOSED CENTENNIAL DOG BEACH
- F** BLUFF RESTORATION

SCALE: 1"=40'
0 20' 40' 80' NORTH

Elder + Centennial | Phase 3 Full Vision

ELDER | CENTENNIAL
BEACH FEASIBILITY STUDY



LEGEND

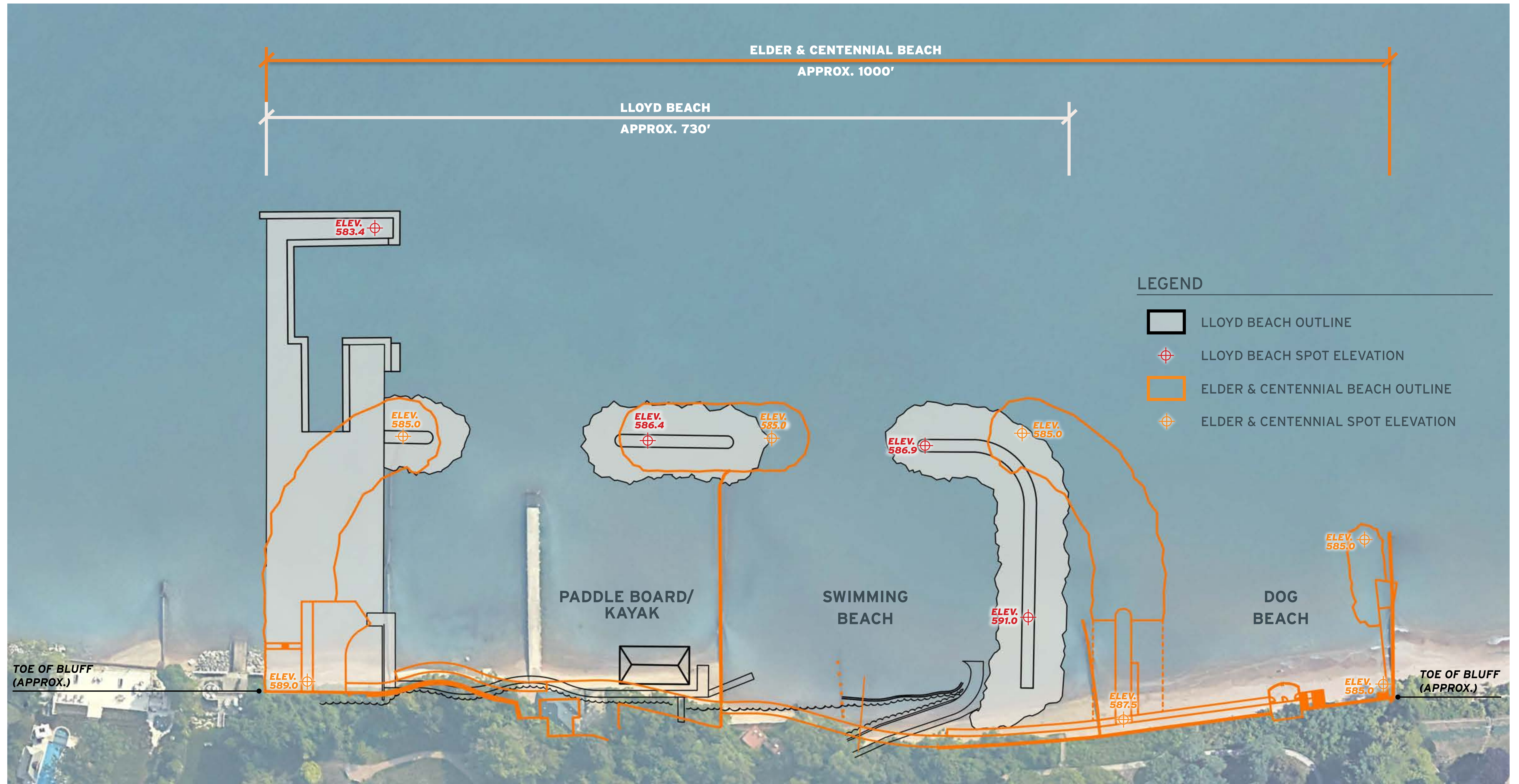
- PROPOSED BLUFF RESTORATION
- ACCESS TO BEACH
- SHEET PILE (PROPOSED)
- SHEET PILE (EXISTING)
- ITEM TO BE REMOVED

- A** STONE BREAKWATER SYSTEM SHORELINE PROTECTION
- B** BOARDWALK CONNECTION
- C** CONSTRUCTION ACCESS ROUTE (FUTURE PEDESTRIAN ONLY)
- D** ACCESSIBLE PEDESTRIAN PATH TO BEACH
- E** PROPOSED CENTENNIAL DOG BEACH
- F** ACCESSIBLE BOARDWALK + BEACH ACCESS
- G** PAD FOR FOOD TRUCKS AND SEATING
- H** ACCESSIBLE VIEWING PIER WITH BENCH SEATING
- I** BLUFF RESTORATION

SCALE: 1"=40'
0 20' 40' 80' NORTH

DRAFT PLAN 3/18/2023

Lloyd Beach v. Elder & Centennial | Scaled Comparison



Please note: this graphic does not currently take into consideration the property exchange agreement.

SCALED VISUAL COMPARISON

SCALE: 1"=40'
0 20' 40' 80' NORTH

DRAFT PLAN 3/18/2023

Elder + Centennial | Drone Imagery

ELDER | CENTENNIAL
BEACH FEASIBILITY STUDY



Centennial



Elder Lane



Overall Aerial



Elder | Existing Conditions



*ELDER LANE | SHORELINE
SEPTEMBER 2021*



*ELDER LANE | FAILING GABION BLANKETS
OCTOBER 2020*



*ELDER LANE | FAILING GABION BLANKETS
OCTOBER 2020*



*ELDER LANE | FAILING PIER
SEPTEMBER 2020*

Lloyd | Previous Conditions



LLOYD | STEEL ELEVATION 584.4
JANUARY 2020



LLOYD | STEEL ELEVATION 583.3
OCTOBER 2019



LLOYD | HEIGHT ELEVATION 586.5
OCTOBER 2019

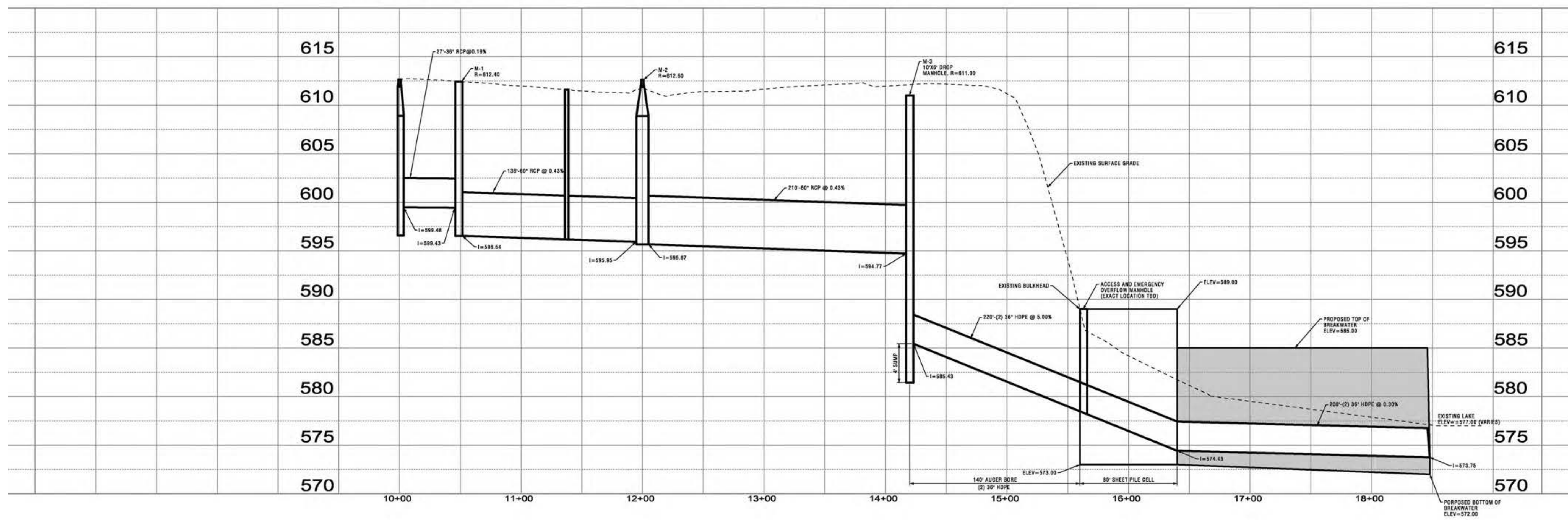
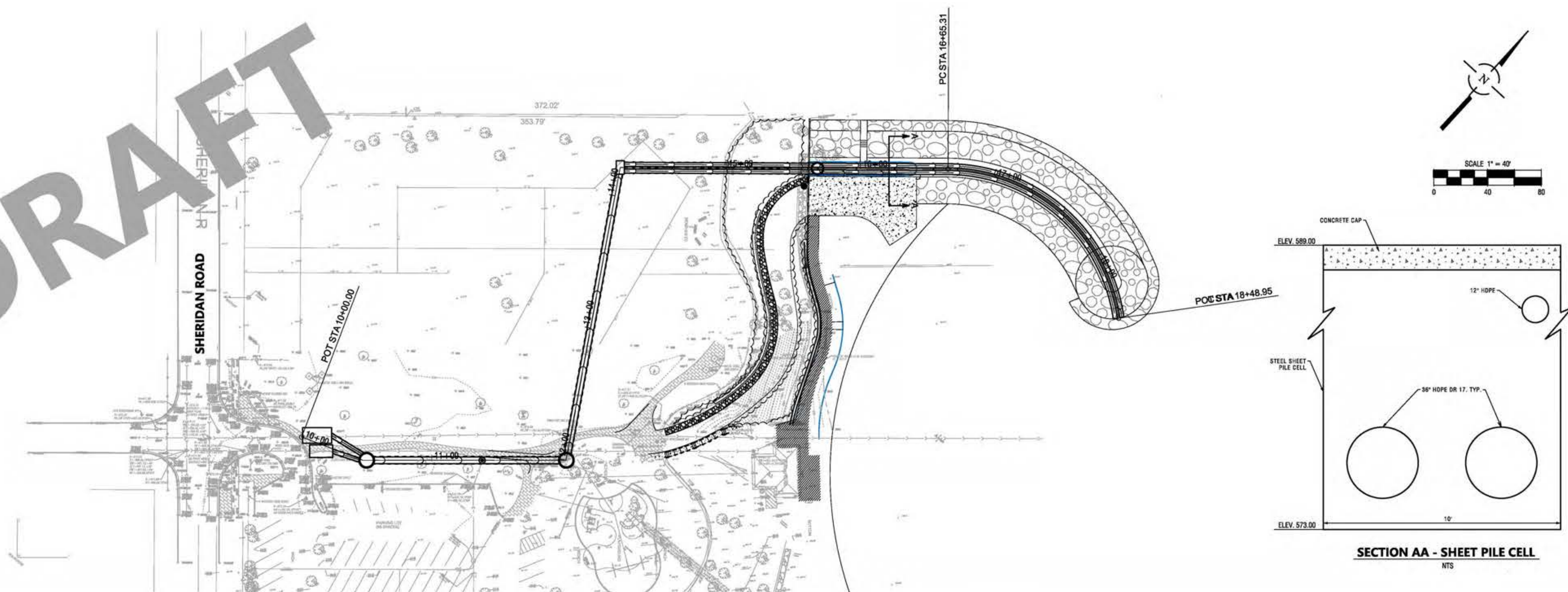


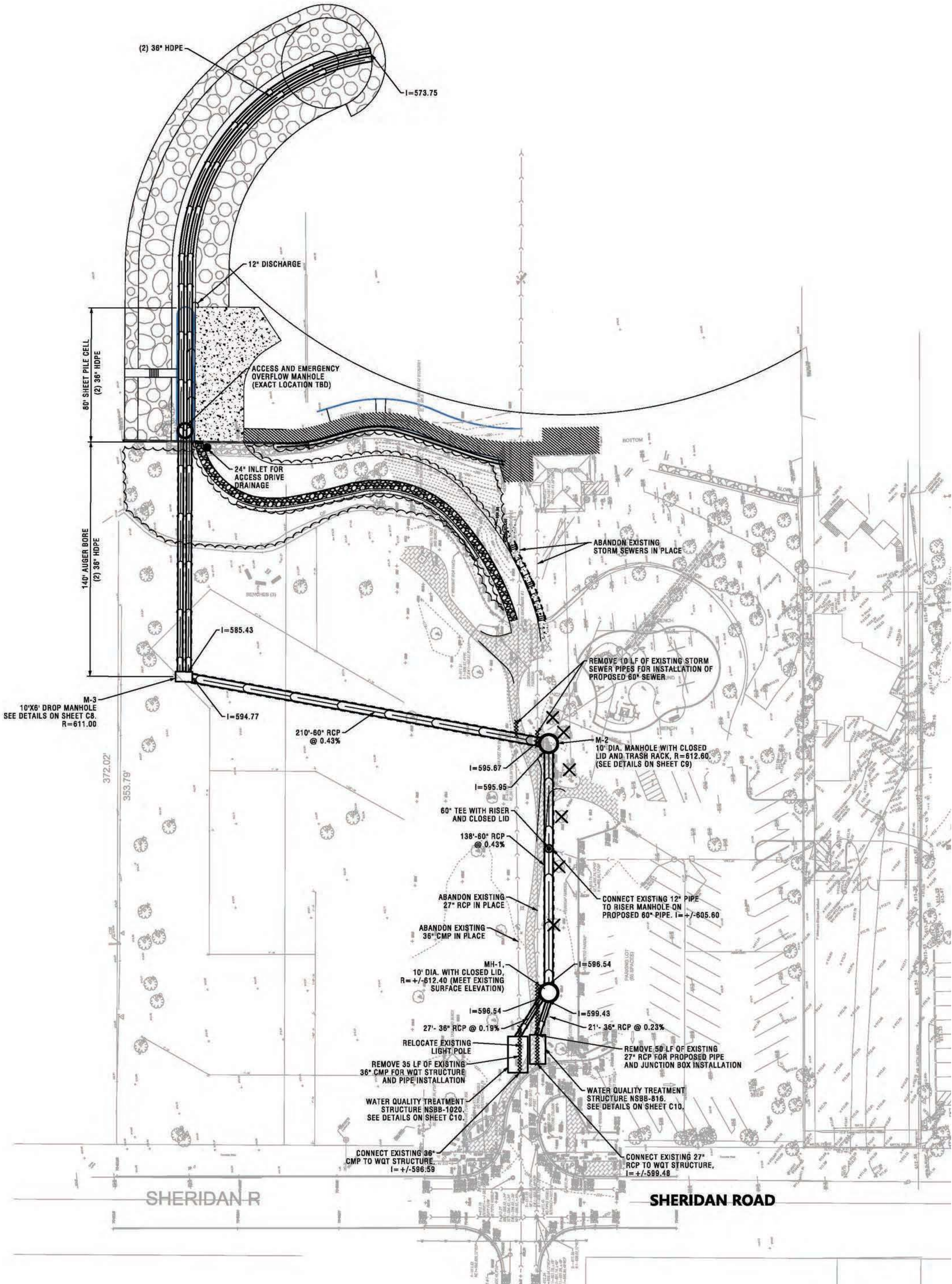
LLOYD | HEIGHT ELEVATION 586.5
OCTOBER 2019

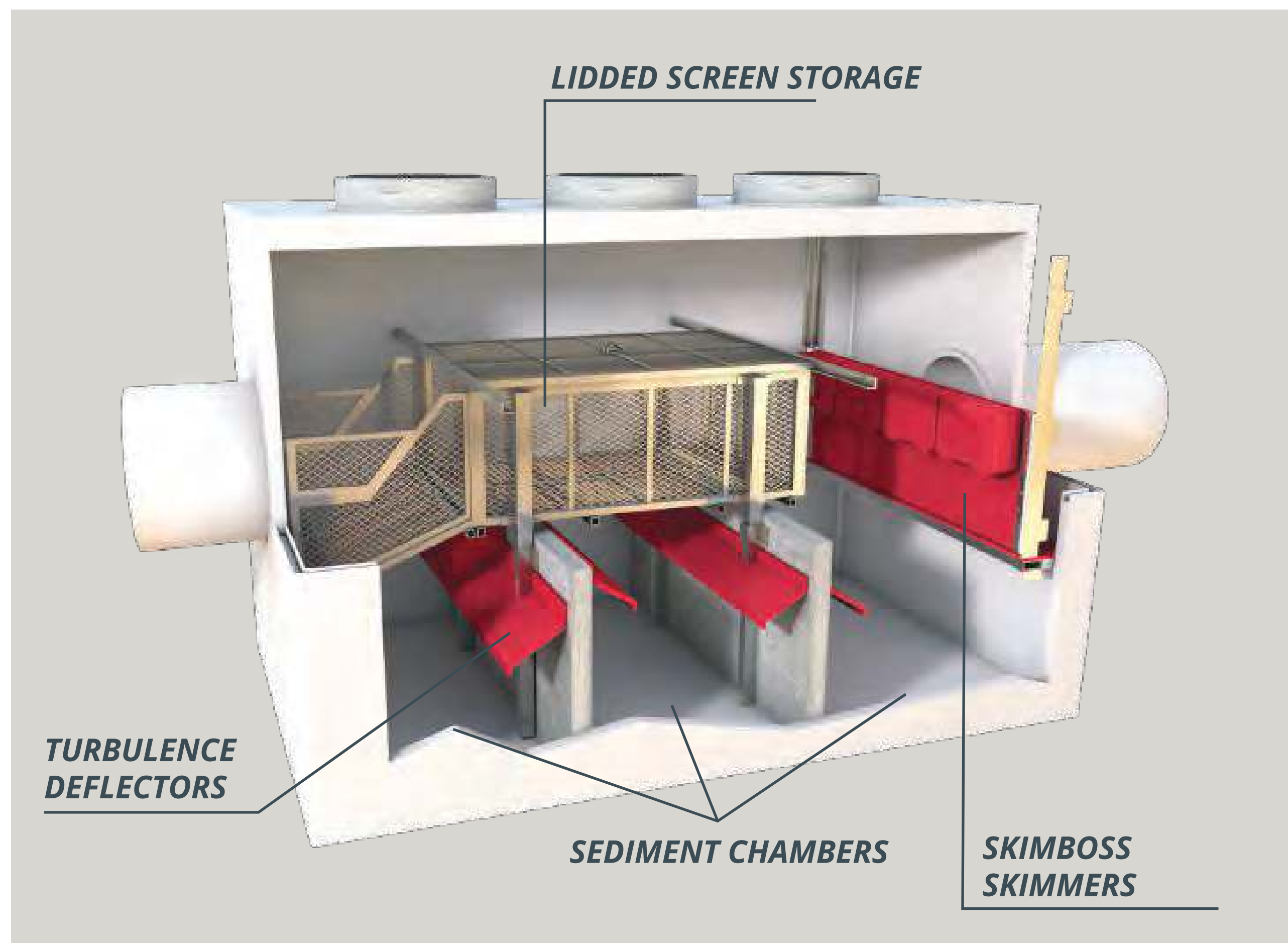
Elder | Phase One Stomwater Relocated



DRAFT







NUTRIENT SEPARATING BAFFLE BOXES

- BOTH BOXES ARE MULTI-STAGED SELF CONTAINED TREATMENT SYSTEMS
- EACH SUBSEQUENT COMPONENT WITHIN THE SYSTEM PROTECTS PRIOR STAGES FROM CLOGGING ISSUES OR FAILURES
- THESE STAGES INCLUDE FILTRATION, HYDRODYNAMIC SEPARATION AND HYDROCARBON ABSORPTION
- REMOVAL RATES ARE 20% NITROGEN, 19% PHOSPHOROUS, 90% TSS
- THE KEY REMOVAL RATE IS SEDIMENT, AS SEDIMENT IS KNOWN TO "CARRY" OTHER POLLUTANTS FOR A RIDE
- REMOVAL OF THE VEHICLE IN THIS CASE IS ESSENTIAL TO POLLUTANT REMOVAL IN STORMWATER RUNOFF
- THESE UNITS CAPTURE THOUSANDS OF POUNDS OF DEBRIS, SEDIMENT, AND NUTRIENTS
- THE PREVIOUS OUTFALL CONFIGURATION DID NOT HAVE WATER QUALITY TREATMENT

