

Winnetka Park District

explore. discover. together.

Winter 2024/2025 | winpark.org | (847) 501-2040

Table of Contents

Special Events 4

Camps 8

Recreation Programs12

Winnetka Ice Arena24

A.C. Nielsen Tennis Center . . .36

Platform Tennis46

Winnetka Golf Club50

Parks Foundation53

Lakefront54

Parties + Rentals58

Parks60

Sponsorships62

NSSRA63



Connect with us!



follow @winnetkaparks



Park District Leadership

President

Christina Codo; ccodo@winpark.org

Commissioners

James Hemmings; jhemmings@winpark.org
Warren James; wjames@winpark.org
Eric Lussen; elussen@winpark.org
Cynthia Rapp; cyrapp@winpark.org
Colleen Root; croot@winpark.org
Jeff Tyson; jtyson@winpark.org

Executive Director

Shannon Nazzal; snazzal@winpark.org

Board Meetings

Board meetings are held at 6pm on the fourth Thursday of every month, and committee meetings are held the second Thursday at 6pm. All meetings are open to the public. Learn more at winpark.org/board-of-commissioners.

Status Alerts + Updates

Phone: (847) 563-3131
Online: winpark.org/status-alerts

Recreation Programs

Winnetka Park District Administrative Office
540 Hibbard Road, Winnetka, IL 60093
Phone: (847) 501-2040
Fax: (847) 501-5779
Online: winpark.org/recreation
Email: wpdinfo@winpark.org

Hours

Monday - Friday: 8:30am - 5pm

How to Register

Mail | Online (Credit Card) | In-Person

Residents: Monday, November 18 at 8:30am

Non-Residents: Wednesday, November 20 at 8:30am

A.C. Nielsen Tennis Center

530 Hibbard Road, Winnetka, IL 60093
Phone: (847) 501-2065
Fax: (847) 501-3057
Online: winpark.org/tennis

Hours

Monday - Sunday: 6:30am - 10pm

Friday through Sunday closing hours
may vary based on demand.

How to Register

Priority for current students: until November 10

Transfer Week: November 11-15

Residents + Non-Resident Members: November 16

Non-Resident Non-Members: November 18

Winnetka Ice Arena + Platform Tennis

490 Hibbard Road, Winnetka, IL 60093
Phone: (847) 501-2060
Fax: (847) 501-3587
Online: winpark.org/ice | winpark.org/platform-tennis

Hours

Ice Arena Office

Monday - Friday: 9am - 5pm

Platform Tennis Courts

Monday - Sunday: 7am - 11pm

How to Register

Mail | Online (Credit Card) | In-Person

Winnetka Ice Arena

Residents: Tuesday, December 3 at 9am

Non-Residents: Tuesday, December 10 at 9am

Platform Tennis

Residents: Tuesday, December 3 at 9am

Non-Residents: Tuesday, December 10 at 9am

Winnetka Golf Club

1300 Oak Street, Winnetka, IL 60093
Phone: (847) 501-2050
Online: winnetkagolfclub.org

Hours

Driving Range Only
Open Daily, weather permitting

How to Register

Online (Credit Card) | In-Person

Winter Events



Veterans Day Observance

The community is invited to join the New Trier VFW Post #4831 to honor United States war veterans. Events of the evening include a presentation of the colors, an honorary guest speaker, and more.

AGES: All

LOCATION: Community House

Day	Dates	Time
Mon	11/11	5pm

Small Business Saturday Scavenger Hunt

Discover and support businesses throughout Winnetka at this year's Scavenger Hunt for Small Business Saturday – sponsored by local businesses, the Village of Winnetka, and the Winnetka Park District.

Stroll through Winnetka to see how many clues you can find! This scavenger hunt is suitable for kids AND adults, alike. Participants will be entered into drawings to win prizes from a wide range of Winnetka businesses.

PLEASE NOTE: Clue sheets will be sent out **Wednesday, November 22** to all pre-registered participants.

AGES: All

LOCATION: Village of Winnetka

Activity Number	Date	Fee
R40600-01	11/25	Free

Schmidt-Burnham Log House

OPEN SUNDAYS | 2 - 4PM | MAY 5 - NOV 24

The Schmidt-Burnham Log House is the oldest log structure in Cook County, Illinois. Built c. 1837, it was the longest occupied home in northern Illinois until the daughter of Anita Willets-Burnham gifted it to the Winnetka Historical Society in 2001. View engaging exhibits, fascinating artifacts, and participate in a new historical scavenger hunt!

For more information, visit the Winnetka Historical Society website at winnetkahistory.org

LOCATION: Crow Island Woods

Gear Up at DICK'S Sporting Goods!

Our partner, DICK's Sporting Goods, is offering you a 20% off discount throughout the store to help you gear up for the season! The coupon is valid in-store xxx at the Northbrook and Glenview locations.



Santa's Mailbox

Elves will sneak into Winnetka to drop off this magical mailbox at the Winnetka Park District so children can mail their letters to Santa. The elves will pack up the mailbox Thursday, December 19 to take back the letters to the North Pole for Santa. **Don't forget to include names and a return address to ensure the elves know where to send Santa's response!**

AGES: All

LOCATION: WPD Administration Office

Dates

11/27-12/19

Fee

Free

Winnetka Tree Lighting

The annual Winnetka Tree Lighting will begin at 5pm at Dwyer Park. Join the community for a time-honored tradition of carols, treats, and the lighting of the tree, which will take place at approximately 6pm.

AGES: All

LOCATION: Dwyer Park

Dates

12/6

Fee

Free

Alvin the Elf's Winter Carnival

Alvin the Elf is coming in from the North Pole to throw Winnetka a Winter Carnival! Children will enjoy fun carnival games, cookie decorating, real reindeer, and more. Santa himself might make a special appearance, so don't forget to bring your letters to give to the big guy himself!

AGES: 2-10

LOCATION: Skokie School

Activity #

Days

Dates

Time

Res/Non-Res

R50550-S

Sat

12/7

10am-12pm

\$15/\$18

Gingerbread House Decorating

Using a variety of sweets and candies, children will use their creativity and imagination to design and decorate one-of-a-kind gingerbread house. Parents are strongly encouraged to stay and participate to create a lasting holiday memory. Save the clean up for us while you enjoy some quality family time! Children may get messy, so please dress accordingly. Space for this event is limited. **Register early to reserve your spot!** *Children 3 years and under permitted with an adult.*

AGES: 4-10

LOCATION: Winnetka Park District

Activity #

Days

Dates

Time

Res/Non-Res

R50553-G

Wed

12/18

5-6pm

\$32/\$38

Holiday Sing

Join families, friends, and neighbors for the 27th annual Holiday Sing. Bring your singing voices, candles (or flashlights), and gather around Village Green to sing everyone's favorite holiday songs. This event lasts approximately 25 minutes.

AGES: All

LOCATION: Village Green Park

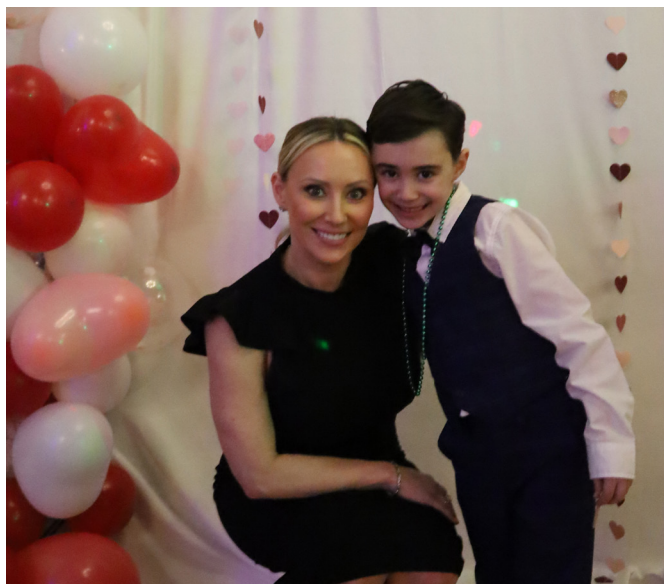
Dates

12/24

Fee

Free





Mother + Son Date Night

Join us for an unforgettable evening designed exclusively for moms and their sons at Michigan Shores Country Club. Our mother and son date night is filled with fun, bonding, and memorable activities. Whether you're looking to share some laughs, enjoy great food, or participate in a dancing filled evening, this event offers the perfect opportunity to strengthen the unique bond between mothers and their sons. The event includes dinner, photo opportunities, and DJ and dancing.

Dress up, enjoy quality time together, and create memories that will last a lifetime. Whether your son is young or a teenager, this evening is designed for all ages to have a blast.

Dress Code: There is no required dress code for this event, but parents and children generally dress in formal attire.

Registration Deadline: January 29

Register each participant attending.

AGES: All Ages

LOCATION: Michigan Shores Club
911 Michigan Ave, Wilmette, IL

Activity #	Days	Dates	Time	Res/Non-Res
R10851-01	Wed	2/5	6-9pm	\$70

Daddy + Daughter Date Night

Dance the night away with your daughters! Come join us at the Michigan Shores Club for our annual daddy + daughter date night. Dates will enjoy music, food, dancing, and entertainment.

Be sure to register early as there are limited spots!

Dress Code: There is no required dress code for this event, but parents and children generally dress in formal attire.

Registration Deadline: January 29

Register each participant attending.

AGES: All Ages

LOCATION: Michigan Shores Club
911 Michigan Ave, Wilmette, IL

Activity #	Days	Dates	Time	Res/Non-Res
R10850-01	Thu	2/13	6-9pm	\$70



Middle School Ski Trip

Have your teenager hit the slopes at Wilmot Mountain Ski Resort with the Winnetka Park District! The fee includes a lift ticket, transportation to and from Wilmot, a ski lesson, and rental equipment (if needed). All children should bring a lunch or money to purchase food at the mountain.

GRADE: 5-8

LOCATION: Wilmot Mountain Ski Resort
11931 Fox River Rd, Wilmot, WI

Equipment + Lift Ticket

Activity #	Days	Dates	Time	Res/Non-Res
R10888-R	Thu	2/20	8am-5pm	\$135/\$155

Lift Ticket Only

Activity #	Days	Dates	Time	Res/Non-Res
R10888-S	Thu	2/20	8am-5pm	\$85/\$100





WINNETKA PARK DISTRICT

Make Work An ADVENTURE!

UPCOMING FOR SUMMER 2025

Lifeguards

Camp

Special Events

Beach + Boat Launch

Athletics

Maintenance



**Browse current positions
at winpark.org/jobs**

Winter Break Camps



Winter Break Camp

SESSION 1: 12/23 - 12/27

SESSION 2: 12/30 - 1/3

Rejoin some of your favorite counselors from the summer for our winter break camp! Campers will participate in a variety of arts and crafts, games, sports, special events, and will likely go on a field trip each week.

No camp on Wednesday (Christmas & New Years Day), Christmas Eve will only be half day, even if signed up for full day.

Flexible scheduling is available for our Winter Break Camps. Call the Administrative Office for more details at (847) 501-2040.

AGES: 4-10

LOCATION: Skokie School

Activity #	Days	Dates	Time	Res/Non-Res
R50500-1A	M,Tu,Th,F	12/23-12/27	9am-12:15pm	\$160/\$192
R50500-1L	M,Tu,Th,F	12/23-12/27	12:15-12:45pm	\$20/\$25
R50500-1U	M,Tu,Th,F	12/23-12/27	9am-3:30pm	\$227.50/\$285
R50500-1W	M,Tu,Th,F	12/23-12/27	8-8:45am	\$30/\$37.50
R50500-2A	M,Tu,Th,F	12/30-1/3	9am-12:15pm	\$160/\$192
R50500-2L	M,Tu,Th,F	12/30-1/3	12:15-12:45pm	\$20/\$25
R50500-2U	M,Tu,Th,F	12/30-1/3	9am-3:30pm	\$260/\$325
R50500-2W	M,Tu,Th,F	12/30-1/3	8-8:45am	\$30/\$37.50

Counselor In Training

SPOTS EXTREMELY LIMITED. REGISTER EARLY!

While many teens have knowledge and experience working with children, being a counselor provides a new skill set beyond babysitting. They will gain valuable work experience necessary for the future, including managerial skills, leadership skills, responsibility, and enhanced communication skills. Participants can register for half days or stay through lunch for an entire day.

AGES: 12-15

LOCATION: Skokie School

Activity #	Days	Dates	Time	Res/Non-Res
R50500-3A	M,Tu,Th,F	12/23-12/27	8:45am-1pm	\$85/\$102
R50500-3U	M,Tu,Th,F	12/23-12/27	8:45am-3:30pm	\$122.50/\$147
R50500-4A	M,Tu,Th,F	12/30-1/3	8:45am-1pm	\$85/\$102
R50500-4U	M,Tu,Th,F	12/30-1/3	8:45am-3:30pm	\$145/\$162

Northwest Passage Outdoor Adventures Winter Break Camp

The experts at PolarExplorers and The Northwest Passage will lead activities including wilderness travel, outdoor cooking, and shelter building in the Skokie Lagoons.

All activities will be held outdoors. The outdoor conditions, temperature, and weather are considered in the selection of activities.

Example activities during a class may include snowshoe building, snowshoeing, fire building, Dutch oven cooking, navigating the wilderness, shelter building, and scavenger hunts

AGES: 10-14

LOCATION: Skokie Lagoons

Activity #	Days	Dates	Time	Res/Non-Res
R50574-01	M,Th,F	12/23-12/27	9am-12pm	\$450
R50574-02	M,Th,F	12/30-1/3	9am-12pm	\$450

Summer Camp 2025 Info Coming Soon!

Keep an eye out for our Spring 2025 Brochure coming out in January for information on 2025 summer camps.

Winnetka Park District offers a wide variety of summer camp programs for youth and teens, with flexible full-day or half-day options.

- » Variety + Adventure camps
- » Lakefront camps (paddleboarding, sailing, and kayaking)
- » Athletic camps (baseball, football, volleyball, golf, tennis, hockey, ice skating, and more!)

School's Out

Winter Break Basketball Skills Camp

AGES: 8-13

LOCATION: Washburne School

Activity #	Days	Dates	Time	Res/Non-Res
R50722-01	Mon	12/23	9am-12pm	\$40
R50722-02	Thu	12/26	9am-12pm	\$40
R50722-03	Fri	12/27	9am-12pm	\$40
R50722-04	Mon	12/30	9am-12pm	\$40
R50722-05	Tue	12/31	9am-12pm	\$40
R50722-06	Thu	1/2	9am-12pm	\$40
R50722-07	Fri	1/3	9am-12pm	\$40

Winter Break Total Sports Camp

This camp focuses on a variety of sports including football, basketball, baseball, kickball, soccer, capture the flag, and other group games. Each day campers focus on skill development and fundamentals for each respective sport, followed by game play. Coaches ensure a fun and energetic atmosphere while promoting teamwork and good sportsmanship.

AGES: 6-12

LOCATION: Washburne School

Activity #	Days	Dates	Time	Res/Non-Res
R50725-01	Mon	12/23	9am-12pm	\$40
R50725-02	Thu	12/26	9am-12pm	\$40
R50725-03	Fri	12/27	9am-12pm	\$40
R50725-04	Mon	12/30	9am-12pm	\$40
R50725-05	Tue	12/31	9am-12pm	\$40
R50725-06	Thu	1/2	9am-12pm	\$40
R50725-07	Fri	1/3	9am-12pm	\$40

Volleyball Skills Camp

Participants receive instruction on all major volleyball skills including; serving, passing, setting and attacking through fun and active drills. In addition to these fundamentals campers are introduced to advanced skills including, offense, defense, and developing specific positions. Daily scrimmages allow players to use these skills in a game environment.

AGES: 8-13

LOCATION: Washburne School

Activity #	Days	Dates	Time	Res/Non-Res
R50757-01	Mon	12/23	12:30pm-3:30pm	\$40
R50757-02	Thu	12/26	12:30pm-3:30pm	\$40
R50757-03	Fri	12/27	12:30pm-3:30pm	\$40
R50757-04	Mon	12/30	12:30pm-3:30pm	\$40
R50757-05	Tue	12/31	12:30pm-3:30pm	\$40
R50757-06	Thu	1/2	12:30pm-3:30pm	\$40
R50757-07	Fri	1/3	12:30pm-3:30pm	\$40



School's Out Trips

The Winnetka Park District will be offering day off of school trips following the District 36 calendar. Each day will include a full day field trip or two half-day field trips back to back to fill out the day. Location may vary based on availability and number of participants.

AGES: 8-11

LOCATION: Winnetka Park District

Ultimate Ninjas + Nickel City

Activity #	Days	Dates	Time	Res/Non-Res
R40827-04	Thu	11/14	9:15am-3:15pm	\$78/\$90

The Zone + Pinstripes

Activity #	Days	Dates	Time	Res/Non-Res
R40827-05	Fri	11/15	9:15am-3:15pm	\$78/\$90

Enchanted Castle

Activity #	Days	Dates	Time	Res/Non-Res
R40827-06	Mon	11/25	9:45am-3:45pm	\$80/\$95

Safari Land

Activity #	Days	Dates	Time	Res/Non-Res
R40827-07	Tues	11/26	9:45am-3:45pm	\$80/\$95

Sky Zone + Play & Spin

Activity #	Days	Dates	Time	Res/Non-Res
R40827-08	Wed	11/27	9:15am-3:15pm	\$80/\$95

Great Wolf Lodge

Activity #	Days	Dates	Time	Res/Non-Res
R10827-09	Mon	1/20-1/20	9:15am-3:15pm	\$80/\$95

Funtopia + Ignite Gaming Lounge

Activity #	Days	Dates	Time	Res/Non-Res
R10827-11	Fri	2/21-2/21	9:30am-3:30pm	\$80/\$95

Register online at
winpark.org/youth/teen

Winnetka Park District Admin Office
540 Hibbard Road
Winnetka, IL 60093
Phone: (847) 501-2040

DIRECTOR OF RECREATION + FACILITIES

Alisa Kapusinski
akapusinski@winpark.org
(847) 501-2072

RECREATION MANAGER (SPECIAL EVENTS, CAMPS + INFORMATION TECHNOLOGY)

Toby Ross
tross@winpark.org
(847) 501-2071

RECREATION MANAGER (ATHLETICS, FIELD RENTALS + OPERATIONS)

James Janesku
jjanesku@winpark.org
(847) 501-2061

RECREATION COORDINATOR (NON-SPORTS PROGRAMS, PARTIES + PARK RENTALS)

Debra Zarembski
dzarembski@winpark.org
(847) 501-2040

LAKEFRONT MANAGER

Matt Barton
mbarton@winpark.org
(847) 501-2045

PROGRAM REGISTRATION

Fax: (847) 501-5779
Online: winpark.org/recreation
In-Person: 540 Hibbard Road

Residents: Monday, November-18 at 8:30am

Non-Residents: Wednesday, November 20 at 8:30am





Safe Sitter Babysitting Certification Courses

Would your child know what to do if an infant choked when they're babysitting? Would they know how to call 911 or how to handle a nosebleed? In this course, students will learn how to handle all of these situations and more! This training will help develop leadership skills, teach basic childcare, first aid, how to develop a babysitting business, and how to keep themselves and others safe.

All students will receive a Safe Sitter Certification card and backpack. Feel free to bring a snack. Check our website for future class additions or call (847) 501-2040 to be added to a callback list. Limited spots available, register early!

AGES: 12-15		LOCATION: WPD Community Room		
Activity #	Day	Date	Time	Res/Non-Res
R40529-11	Fri	11/15	12-5pm	\$140/\$170
R10529-01	TBD	TBD	12-5pm	\$145/\$175
R10529-02	TBD	TBD	12-5pm	\$145/\$175
R10529-03	TBD	TBD	12-5pm	\$145/\$175

Music Together

Toddlers learn by watching, playing, and experimenting. Our mixed-age class allows children to grow musically while interacting socially with their peers.

AGES: Infant - 5 (with adult)
 LOCATION: Our Music Institute

NO CLASS: 3/26 + 3/29
 400 Central Ave. #3, Northfield, IL

Activity #	Day	Date	Time	Res/Non-Res
R10544-M1	Tue	1/28-4/8	9:15-10am	\$285/\$315
R10544-M2	Tue	1/28-4/8	10:15-11am	\$285/\$315
R10544-T1	Tue	1/28-4/8	9:15-10am	\$235/\$260
R10544-T2	Tue	1/28-4/8	10:15-11am	\$235/\$260

Introduction to Astronomy for Kids!

Let's help our kiddos ask questions and be relentlessly curious about the universe we live in! If they've ever expressed an interest or love for space, astronomy or the mysteries of the cosmos, they might love this class. Using a lot of visuals, games, real telescope time and good ol' fashioned discussion, we explore our solar system, our galaxy and beyond looking at meteors, asteroids and comets, black holes, exoplanets and more along the way!

AGES: 8-12		LOCATION: Winnetka Park District		
Activity #	Day	Date	Time	Res/Non-Res
R10546-01	Mon	1/6-3/3	3:45-4:30pm	\$203/\$223

Storytime & Mindfulness!

Mindfulness can build new neural connections making us calmer, happier, and more resilient. Storytime and Mindfulness class is a fun and engaging way to slow down and connect with your child. Local author Michele Foote will read her picture books, What Should We Do Today, Mommy?, Love You to Pieces, and Playdate In Outer Space, along with several other picture books to encourage mindfulness! Michele will discuss the joy of being in the present moment and seeing the world through the fresh eyes of a child. You'll practice simple breathing exercises, engage in playful games and crafts, and practice gratitude by exploring the "magic" in ordinary days through drawing and journaling.

Recent research is proving that mindfulness leads to greater overall physical and mental health and ignites passion and creativity! This class will inspire you and your child to practice mindfulness as your children grow. Any adult is welcome to attend with the child.

AGES: 3-8		LOCATION: Winnetka Park District		
Activity #	Day	Date	Time	Res/Non-Res
R10548-01	Sun	1/5-3/2	11am-11:50am	Free

Magic!

Kids will learn magic tricks that involve cards, ropes, coins, mind-reading, and more! Children are encouraged to sign up again and again as new tricks are taught every class. Each child receives a magic kit. **Instructor:** Magic Team of Gary Kantor

AGES: 5-12		LOCATION: Winnetka Park District		
Activity #	Day	Date	Time	Res/Non-Res
R10549-01	Thu	2/13	5-5:55pm	\$25/\$30

Oak Leaf Forest Preschool 24/25 School Year

A parent cooperative preschool affiliated with 501c3 nonprofit Oak Leaf Cooperative School, is a mixed-age, play-based nature preschool run by parents and an experienced early childhood educator. Parents and teachers work collaboratively to shape and manage the program. Parents can choose to volunteer in class or behind the scenes.

Oak Leaf Forest Preschool supports a child's fundamental need to explore. We foster curiosity and social emotional skills through our emphasis on play-based learning. The outdoor setting encourages immersive hands-on experiences while allowing for spontaneous learning opportunities and strengthens a child's connection to the environment.

Classes take place entirely outdoors, in all seasons, at Crow Island Woods, a 17-acre Winnetka Park District nature area. In the event of severe weather, classes will be held at nearby Winnetka Presbyterian Church. Children must be potty-trained, or a parent/caregiver must be available to change a diaper or pull-up.

This co-op is led by experienced Waldorf teacher Elizabeth Kelly. Please contact Ms. Kelly to learn more about the program at family.life.ways@gmail.com.

Dates

September 4, 2024 - May 30, 2025 - Registration open to start mid-year

Ages

2.5-6

The program is designed for 3-6 year olds. Please contact Ms. Kelly to discuss readiness for younger children (2.5-2.9 years old)

Fees

\$1485 or nine payments of \$165 per day selected. Pro-rated if starting mid-year.

Payment options: 1) Pay in Full or 2) Payment Plan. Payment Plan requires a saved credit card on file. Nine equal payments will be made. First payment at the time of registration and eight monthly payments (September 1, 2023 – April 1, 2024).

Registration via Payment Plan must be done in-person at Administration Center.

Enrollment options

Select 2 or more days:

Activity #	Day	Time
R50100-01	Mon	8:30am-12pm
R50100-02	Tu	8:30am-12pm
R50100-03	Wed	8:30am-12pm
R50100-04	Th	8:30am-12pm
R50100-05	Fri	8:30am-12pm

Oak Leaf recommends selecting consecutive days, if possible.



Haven's Winnetka Youth Organization:

The "YO" is a free after-school drop-in center for 6th-12th graders. Open 3:15-5:30pm five days a week during the school year and 12-5:30pm during seasonal breaks, the Warming House provides a welcoming environment to all teens.

With no referral necessary, the Warming House welcomes any teen who needs a safe space, is seeking community service opportunities, or may want to just to drop in. Structured programs are offered daily, including cultural humility, creative arts, youth leadership boards, academics, community service, and recreation.

We take youth on monthly excursions and provide multiple volunteer opportunities within and outside the YO. The program creates a tight-knit community that is committed to bettering its community at large.

GRADE: 6-12

LOCATION: Indian Hill



Adult - Tot Sports

Parents + guardians are an integral part of helping their tots develop basic sports movement and motor skills. Motor skill activities focus on hand/eye and hand/foot coordination. Sports equipment and instruction are provided to help guide your child through an introduction to organized sports. Parent or caregiver participation is required.

AGES: 2-4 with an Adult **LOCATION:** Skokie School

NO CLASS: 1/20 + 2/17

Activity #	Day	Date	Time	Res/Non-Res
R10721-01	Mon	1/6-3/17	5pm-5:45pm	\$167/\$1850

Lil' Leaguers Baseball: Juniors

The Single A baseball program is designed to give children an opportunity to begin their baseball playing experience in a fun and supportive environment. During the class, activities are introduced to promote proper balance, equipment, hand eye coordination, following directions and early baseball fundamentals.

AGES: 2-3 **LOCATION:** Skokie School

Activity #	Day	Date	Time	Res/Non-Res
R10711-01	Sat	1/11-3/15	11:15am-12pm	\$185/\$200

Lil' Leaguers Baseball: Rookies

The Double A program is designed to progress children through their early baseball experience. Simple skills acquired in the Single A division are reinforced and other aspects of the game are introduced in a fun and supportive environment.

AGES: 4-6 **LOCATION:** Skokie School

Activity #	Day	Date	Time	Res/Non-Res
R10711-02	Sat	1/11-3/15	12-12:45pm	\$185/\$200

Softball Skills Clinic 1

This class is a complete introduction for the beginning softball star. Learn about the bases, field positions, and defensive mechanics while gaining skills in throwing and hitting. Live games are played every day with instructor pitching. Players will use 11" softie or indoor softball. Softball glove is required.

AGES: 6-8

LOCATION: Skokie School

Activity #	Day	Date	Time	Res/Non-Res
R10713-01	Sat	1/11-3/15	1pm-2pm	\$220/\$240

Softball Skills Clinic 2

Learn how to play each position effectively with instructional focus on base coverage and infield/outfield teamwork. Advance your offensive game by learning how to bunt and develop proper hitting techniques and bat swing. The clinic also covers base running and gives instruction on how to steal and slide.

AGES: 9-12

LOCATION: Skokie School

Activity #	Day	Date	Time	Res/Non-Res
R10713-02	Sat	1/11-3/15	2pm-3pm	\$220/\$240

Arena Football

Come join in on the fun and start playing the nation's most loved game! Players are introduced to stance, receiving, rushing, blocking and defense. Each week ends with a scrimmage encouraging teamwork and sportsmanship. Players always get to play either receiver or running back each week. Games focus on fundamentals and field concepts, as well as positions and mechanics. No equipment necessary!

AGES: 6-9

LOCATION: Skokie School

NO CLASS: 1/20 + 2/17

Activity #	Day	Date	Time	Res/Non-Res
R10730-01	Mon	1/6-3/17	5:45pm-6:45pm	\$167/\$185

Junior Spikers Volleyball

Need Description.

Need Picture.

AGES: 5-7

LOCATION: Washburne School

Activity #	Day	Date	Time	Res/Non-Res
R10743-01	Sun	1/12-3/16	12:15pm-1pm	\$185/\$200

Girls & Boys Volleyball Leagues

The Volleyball League exposes youth players to team dynamics and develops volleyball skills, strategy, and technique. Evaluations will be held the first week and will be used to determine team placement and provide balanced teams. The Hot Shots Sports coaches will conduct a 20-minute skills session each week, followed by multiple games for each team that will be timed. Emphasis for the league will be placed on skill development, teamwork, and sportsmanship.

AGES: 11-15

LOCATION: Skokie School

NO CLASS: 1/20 + 2/17

Activity #	Day	Date	Time	Res/Non-Res
R10760-01	Mon	1/6-3/17	6:30pm-8:30pm	\$333/\$360
R10760-02	Sun	1/12-3/16	3pm-5pm	\$370/\$400

Volleyball Skills Clinic 101

This clinic includes instruction on all major volleyball skills; serving, passing, setting and attacking. Players receive a solid foundation of these fundamental skills through fun and active drills, building up to team play. This class is for the volleyball beginner looking to understand the game and learn new skills. Kneepads are recommended.

AGES: 8-11

LOCATION: Washburne School

Activity #	Day	Date	Time	Res/Non-Res
R10763-01	Sun	1/12-3/16	1pm-2pm	\$185/\$200

Volleyball Skills Clinic 201

This clinic focuses on progressing all skills including, transitioning from free ball, offense, defense, and developing specific positions. This is a great opportunity for players to enhance their skill level and knowledge of the game. Kneepads are recommended.

AGES: 12-15

LOCATION: Washburne School

Activity #	Day	Date	Time	Res/Non-Res
R10763-02	Sun	1/12-3/16	2pm-3pm	\$185/\$200

Lil' Strikers Soccer: Juniors

Junior Strikers uses age appropriate games and drills to promote motor skills and familiarity with a soccer ball. Through our fun games and adventure themed activities, players develop skills such as balance, shooting, close ball control, and trapping. The Junior Strikers experience is one that not only instills a love for the game of soccer, but also shows the importance of sports activity to promote a full and healthy life.

AGES: 2-3

LOCATION: Washburne School

Activity #	Day	Date	Time	Res/Non-Res
R10793-01	Sun	1/12-3/16	9am-9:45am	\$185/\$200

Lil' Strikers Soccer: Rookies

The focus of the Rookie Strikers is FUNdamentals that are crucial for every budding soccer player. Players focus on foot placement while shooting, following through on their shot, manipulating the ball in creative ways, defensive stance, and much more; all while participating in our fun games and adventure themed activities.

AGES: 3-4

LOCATION: Washburne School

Activity #	Day	Date	Time	Res/Non-Res
R10793-02	Sun	1/12-3/16	9:45am-10:30am	\$185/\$200

Lil' Strikers Soccer: Pros

The Pro Strikers program builds on skills and rules learned in the Rookie Strikers class and also introduces more fundamental techniques and basic rules.

AGES: 4-5

LOCATION: Washburne School

Activity #	Day	Date	Time	Res/Non-Res
R10793-03	Sun	1/12-3/16	10:30am-11:15am	\$185/\$200

Lil Strikers Soccer: All Stars

The All Star Strikers level is the top level of classes for your young soccer star. In this class, players develop a close familiarity with the ball and learn the importance of always having it under control. Being geared towards getting your child ready for future soccer experiences, this class tests players in a more challenging environment working on 1v1 and team exercises.

AGES: 5-6

LOCATION: Washburne School

Activity #	Day	Date	Time	Res/Non-Res
R10793-04	Sun	1/12-3/16	11:15am-12pm	\$185/\$200

Need Picture.

Pre-Competitive Swim Classes

Swimmers learn to swim in a step by step program of specific skills that teach students to master all the skills to be safe in the water and proficient as a competitor.

- » Groups have a maximum of 4 swimmers per instructor.
- » There is a program supervisor on deck for every lesson that assists instructors, evaluates swimmers' progress, and answers parents' questions.
- » There are 10 levels in our program, and swimmers can advance to the each level immediately as required skills are mastered.
- » Swimmers reaching levels 7 and beyond will have the opportunity to be placed on the competitive swim team!

AGES: 4+

LOCATION: New Trier Northfield Campus

Activity #	Day	Date	Time	Res/Non-Res
R10810-01	Sun	1/5-3/16	9:20am-9:50am	\$270/\$270
R10810-02	Sun	1/5-3/16	10am-10:30am	\$270/\$270
R10810-03	Sun	1/5-3/16	10:40am-11:10am	\$270/\$270
R10810-04	Sun	1/5-3/16	11:20am-11:50am	\$270/\$270
R10810-05	Sun	1/5-3/16	12pm-12:30pm	\$270/\$270
R10810-06	Sun	1/5-3/16	12:40pm-1:10pm	\$270/\$270

House League Basketball

The Winnetka Park District's House League Basketball program provides recreational basketball to boys and girls of all skill levels. The league is made up of 275 players.

Tentative Season Schedule:

- » Practices Start: Week of November 27
- » Games Start: Saturday, January 13
- » Regular Season Ends: Saturday, March 16
- » Playoffs (5th-6th graders only): March 18 - 21
- » Practice and game days/times will vary according to final teams and coach availability. Practices are at local schools.

How 8-12 player teams are formed:

- » Each coach and assistant coach will coach their own child's team. No one can request a specific coach.
- » Players in grades 3 and 4 are allowed one mutual friend request, but it is not guaranteed. Beginning this year, 5 and 6 graders may not make friend requests.
- » Participants must attend the evaluation. Otherwise, they will be placed on a team.
- » Teams are not always divided by school.
- » Rosters are final once the season begins.
- » If you sign up past the deadline, your child will be placed on a random team chosen by the Park District.

Registration Deadline: November 10

Evaluations

Boys Season

GRADE: 3-6		LOCATION: Skokie School		
Activity #	Day	Date	Res/Non-Res	
R40724-4	Sat	11/25-3/16	\$210/\$220	
R40724-5	Sat	11/25-3/16	\$210/\$220	
R40724-6	Sat	11/25-3/16	\$210/\$220	

Girls Season

GRADE: 3-6		LOCATION: Skokie School		
Activity #	Day	Date	Res/Non-Res	
R40725-3	Sat	11/25-3/16	\$210/\$220	
R40725-4	Sat	11/25-3/16	\$210/\$220	
R40725-5	Sat	11/25-3/16	\$210/\$220	
R40725-6	Sat	11/25-3/16	\$210/\$220	

Lil' Dribblers Basketball: Juniors

The Junior Dribblers basketball program is designed to give children an opportunity to begin their basketball playing experience in a fun and supportive environment. During the class, activities are introduced to promote proper balance, equipment, hand eye coordination, following directions and early basketball fundamentals.

AGES: 2-3

LOCATION: Skokie School

Activity #	Day	Date	Time	Res/Non-Res
R10740-01	Sat	1/11-3/15	9am-9:45am	\$365/\$400

Lil' Dribblers Basketball: Rookies

The Rookie Dribblers program is designed to progress children through their early basketball experience. Simple skills acquired in the Junior Dribblers are reinforced and other aspects of the game are introduced in a fun and supportive environment.

AGES: 3-4

LOCATION: Skokie School

Activity #	Day	Date	Time	Res/Non-Res
R10740-02	Sat	1/11-3/15	9:45am-10:30am	\$365/\$400

Lil' Dribblers Basketball: Pros

The Pro Dribblers program builds on skills and rules learned in the Rookie Dribblers class and also introduces more fundamental techniques and basic rules.

AGES: 5-6

LOCATION: Skokie School

Activity #	Day	Date	Time	Res/Non-Res
R10740-03	Sat	1/11-3/15	10:30am-11:15am	\$365/\$400

Boys Basketball Clinics

Boys have the opportunity to develop the fundamentals of basketball including shooting, ball handling, dribbling, passing and more. The clinic will feature: 5-on-5 full court play with active instruction and tips from the coaching staff of Hot Shots Sports.

AGES: 6-8

LOCATION: Skokie School

Activity #	Day	Date	Time	Res/Non-Res
R10722-01	Wed	1/8-3/19	5pm-5:45pm	\$204/\$225
R10722-02	Wed	1/8-3/19	5:45pm-6:45pm	\$204/\$225

Girls Basketball Clinics

Girls have the opportunity to develop the fundamentals of basketball including shooting, ball handling, dribbling, passing and more. The clinic will feature: 5-on-5 full court play with active instruction and tips from the coaching staff of Hot Shots Sports.

AGES: 5-7

LOCATION: Skokie School

Activity #	Day	Date	Time	Res/Non-Res
R10727-01	Tue	1/7-3/18	5pm-6pm	\$284/\$305
R10727-02	Tue	1/7-3/18	6pm-7pm	\$284/\$305

Adult + Tot Tumbling

Guardians and children will learn basic tumbling. Upbeat instruction will focus on forward and backward rolls, handstands, cartwheels, and stretching.

AGES: 2-4 with adult

LOCATION: Winnetka Park District

Activity #	Day	Date	Time	Res/Non-Res
R10770-01	Thu	1/16-3/6	2pm-2:45pm	\$160/\$180

Additional Child

Activity #	Day	Date	Time	Res/Non-Res
R10770-02	Thu	1/16-3/6	2pm-2:45pm	\$25/\$25

Cheerleading

Participants will learn cheers, jumps, tumbling, and the importance of teamwork through games and group activities. The schedule will consist of Tuesday practices and Sunday games. Uniforms will not be provided. All participants who would like a uniform must purchase it using the links below.

TOP (DARK GREEN): [BIT.LY/WPD-CHEER-TOP](http://bit.ly/wpd-cheer-top)

SKIRT (FOREST GREEN): [BIT.LY/WPD-CHEER-SKIRT](http://bit.ly/wpd-cheer-skirt)

If you have any questions, contact James Janesku at (847) 501-2061 or jjanesku@winpark.org.

Mini Cheer

GRADE: 1-3

LOCATION: Skokie School

Activity #	Day	Date	Time	Res/Non-Res
R10733-01	Tue	1/7-3/11	5pm-6pm	\$215/\$230

Cheerleading

GRADE: 4-8

LOCATION: Skokie School

Activity #	Day	Date	Time	Res/Non-Res
R10733-02	Tue	1/7-3/11	6pm-7pm	\$215/\$230

Chicago Loves Dance Hip Hop

Chicago Loves Dance takes pride in teaching the self-esteem and socialization required for everyday life through the activity of dance and performance. Students will learn choreography to the newest pop and dance songs, show off their creativity in freestyle sessions, and perform in a fun dance competition at the end of class.

GRADE: 1-3

LOCATION: Winnetka Park District

Activity #	Day	Date	Time	Res/Non-Res
R10771-01	Wed	1/8-3/12	5pm-6pm	\$195/\$210
R10771-02	Wed	1/8-3/12	6pm-7pm	\$195/\$210



Chicago Loves Dance Holiday Hip Hop

Dance along to your favorite festive tunes! Students will learn a fun holiday themed dance that they will perform on the last day of class.

GRADE: 1-5

LOCATION: Winnetka Park District

Activity #	Day	Date	Time	Res/Non-Res
R50777-01	Tue	12/3-12/17	5pm-6pm	\$60/\$75

Youth Yoga

Children will learn beginner yoga movements with fun, yoga-based games. Yoga in early childhood is wonderful for improving listening skills, building self-esteem, and supporting social and emotional learning. Yoga mats supplied.

AGES: 6-12

LOCATION: Winnetka Park District

Activity #	Day	Date	Time	Res/Non-Res
R10772-01	Fri	1/17-3/7	6pm-7pm	\$160/\$180

Youth Gymnastics

Children learn and master fundamental gymnastics and tumbling. Upbeat instruction will focus on forward and backward rolls, handstands, cartwheels, and stretching.

AGES: 4-6

LOCATION: Skokie School

Activity #	Day	Date	Time	Res/Non-Res
R10773-01	Thu	1/16-3/6	5pm-6pm	\$160/\$180
R10773-02	Thu	1/16-3/6	6pm-7pm	\$160/\$180

Adult + Child Yoga

Take a yoga class geared toward the comfort level of both children and adults. Parents and children will learn poses, movements, and stretches, while spending quality time together. Yoga mats supplied.

AGES: 5-9

LOCATION: Winnetka Park District

Activity #	Day	Date	Time	Res/Non-Res
R10774-01	Fri	1/17-3/7	5pm-6pm	\$160/\$180

Additional Child

Activity #	Day	Date	Time	Res/Non-Res
R10774-02	Fri	1/17-3/7	5pm-6pm	\$25/\$25

Affiliate Organizations



Northshore Trevians Youth Football

The Northshore Trevians is the youth tackle + flag football feeder program to New Trier High School. Taught the right way, with health and safety of our young athletes as our number one priority, our players benefit from the early development with New Trier's offensive and defensive play schemes. Our experienced coaches and directors work to ensure safe, positive and enriching experience for all participants. Central to this commitment is our partnership with New Trier High School Head Varsity Coach, Brian Doll and his coaching staff. The program uses Winnetka Park District turf fields for practices and games, as well as New Trier High School turf fields for home games.

Fielding teams ages 6 - 14 years old, we provide a fun place for kids to play that include all sizes and skill levels:

- » **FLAG FOOTBALL:** Kindergarten - 8th Grade
- » **GIRLS FLAG FOOTBALL:** 3rd - 8th Grade
- » **7V7 NON-CONTACT FOOTBALL:** 4th - 8th Grade
- » **TACKLE FOOTBALL:** 1st - 8th Grade

REGISTRATION + MORE INFORMATION: NTYFootball.org | 312-307-6701 | jrtrevianfootball@gmail.com



Kenilworth-Winnetka Baseball Association

Kenilworth-Winnetka Baseball Association (KWBA) is a non-profit, volunteer organization that creates a fun, safe, community environment for boys and girls to play baseball, build character, learn sportsmanship, develop skills, and make friends.

KWBA offers a fall league for boys + girls in grades 1-8. Teams are formed by school as best as possible. Friend requests are accepted (secretary@kwba.org). Volunteer coaches can choose their teams to a certain number of players.

REGISTRATION + MORE INFORMATION: kwba.org/registration



American Youth Soccer Organization

The American Youth Soccer Organization (AYSO) philosophy is to provide soccer programs that enrich children's lives. Our program is heavily based on child development principles. We encourage our players to learn and grow in both sports and social skills. We believe that all players should be able to develop their soccer skills and knowledge to the best of their abilities, both individually and as members of a team, in order to maximize their enjoyment of the game.

Any child who wishes to play may register. AYSO is not limited to any specific group of people. To the extent possible, all teams in each two-year age division are created equal, with similar composition of experienced versus inexperienced players, and older versus younger players in that age division.

Spring Season: April - June | Summer Camps/Clinics + Winter soccer available

REGISTRATION + MORE INFORMATION: www.playsoccer.org



Team One Lacrosse

Girls Options

First Sticks Program

ENTRY LEVEL PROGRAM

GRADES: K-2

DATES: Tuesdays, 4-5pm

Develop + Play Program

DEVELOPMENTAL PROGRAM

GRADES: 3-8

DATES: Tuesday, 5-7pm

Team ONE 2024-2025 Girls Tryouts

LOCAL/REGIONAL/NATIONAL
TRAVEL TEAMS

GRADES: 3-12

DATES: August 15 + 17

Boys Options

First Sticks Program

ENTRY LEVEL PROGRAM

GRADES: K-2

DATES: Thursdays, 4-5pm

Develop + Play Program

DEVELOPMENTAL PROGRAM

GRADES: 3-6

DATES: Thursday, 5-7pm

Team ONE 2024-2025 Boys Tryouts

LOCAL/REGIONAL/NATIONAL
TRAVEL TEAMS

GRADES: 3-12

DATES: August 18

More registration + more information available at:

t1lax.com | (224) 534-7500 | info@t1lax.com



490 Hibbard Road, Winnetka, IL 60093
(847) 501-2060

FACILITY MANAGER

Paul Schwartz
pschwartz@winpark.org
(847) 501-2062

ASSISTANT FACILITY MANAGER

James Faedtke
jfaedtke@winpark.org
(847) 501-2059

SKATING DIRECTOR

Christine Condon
ccondon@winpark.org
(847) 716-1295

SKATING SCHOOL MANAGER

Brianna Perez
bperez@winpark.org
(847) 501-2069

GROUP LESSON REGISTRATION

Online: winpark.org/ice

PRIVATE LESSON REQUESTS

ccondon@winpark.org
(847) 716-1295



Public Skating

Hours

Weekdays (September 3 - May 22)

Monday - Thursday: 10:45am - 12:15pm
Tuesday: 3:30 - 4:45pm

Weekends (October 12 - March 16)

Saturday + Sunday: 2 - 3:20pm

Please check the rink calendar for up to date changes

No Public Skating: March 1 and March 2

Fees

Admission

Adult (18+):	\$7.50
Youth (6 - 17):	\$6.50
Youth (5 and under):	Free per paid adult

Skate Rentals

One skate rental:	\$4
Ten skate rental (punch card):	\$28

Public Skate Punch Cards

Ten session punch card:	\$50
-------------------------	------

Parties on Ice

Public Skate Package:

Have your child's birthday party on ice! Skate on the ice, enjoy some pizza, and have fun!

Skating birthday parties are offered at the Winnetka Ice Arena Saturdays and Sundays, October 12, 2024, through March 16, 2025 during Public Skate from 2 – 3:20pm.

Package Includes:

- » 15 admissions + skate rentals
- » 3 pizzas (cheese or pepperoni)
- » Water or juice boxes
- » Decorations

Ages	Length(hrs)	Max	Res/Non-Res
6+	1.5	15	\$250/\$300

Private Skate Package:

- » Reserve your own private ice. *Based on ice availability*
- » A la carte options

Book your ice birthday party by contacting James Faedtke at (847) 501-2059 or jfaedtke@winpark.org.

Ice Skating + Hockey Lessons

Session Dates

WINTER: January 4 - March 21, 2025

NO CLASS: 3/1

SPRING: March 31 - May 23, 2025

NO CLASS: 5/3

Registration

Residents: December 3, 2024

Non-Residents: December 10, 2024

Online registration for each session ends the night before the session begins. All subsequent registration must be done in-person or with the Skating Director.

Policies + Guidelines

- » A \$25 service fee will be charged for refunds. There are no refunds after the second class, except for medical reasons.
- » Skaters may make-up one missed class per session. Approval must be obtained from the skating director (Christine Condon, ccondon@winpark.org) before the make-up class. No make-up classes are permitted the first or evaluation week of a session. Make-up classes do not rollover to the following session.
- » Classes may be combined or canceled at the discretion of management, depending on class enrollment.
- » All Tots and Junior Hockey Skaters 5 years and under must have a parent or guardian in the building at all times.
- » All children wearing hockey skates must wear a hockey helmet with a face guard.
- » All beginner level skaters should wear a knit hat or bike helmet, and gloves or mittens.
- » Class fees do not include skates. Class skate rentals are \$3.50 per session. A ten skate rental punch card can also be purchased for \$28.
- » Register for two or more classes per student, per session, and receive a 10% discount on additional classes.

Young or First-Time Skaters

For young or first-time skaters: Learning to skate on traditional skates is much easier and safer. Our introductory courses allow children to build the confidence needed to transition to hockey skates. Tot 1 skaters with no prior skating experience must complete one full session of Tot 1 in traditional skates. Learn to Skate Hockey participants may wear either traditional or hockey skates.

About the Curriculum

ISI Ice Skating

The Winnetka Ice Arena offers ice skating lessons through ISI (Ice Sports Industry). ISI Skating Programs were developed more than 50 years ago and has become the program of choice for successful coaches + skating schools while keeping skating fun!

It is based on consistent and well-defined levels of achievement that have proven to guide a skater from basic beginner maneuvers through significantly more advanced and even competitive skill sets. It has literally taught millions of people how to skate and skate well. Many of the most accomplished skaters in the United States began in this program and have gone on to achieve some of the world's highest titles.

ISI Memberships

ISI individual membership is for skaters of all ages and abilities, from beginning to recreational to competitive levels. Members may purchase test patches. Test patches provide a tangible reward and recognition of skater achievement for each test level. Patches can be purchased by ISI members once all the skills in a level have been mastered for \$5 per patch. Previously achieved level patches may be purchased for \$3 per patch. These patches are available from the skating director.

Tots

A child who can walk well can be taught to ice skate. Very young children usually learn better in a group class environment. These classes are designed for beginning skaters ages three to five years old. Class maneuvers are broken down into smaller parts so they can be more easily learned. Instruction is given with a focus of having "fun" on the ice.

Pre-Alpha, Alpha, Beta, Gamma, Delta

These Learn to Skate levels are for skaters ages five and up. This step-by-step progression of skills makes learning fun while improving the skater's confidence on ice. The mastery of these basic skills is required before moving on to higher levels of achievement, and it can take more than one semester to pass each class level. Upon completion of these levels, skaters can advance to more specialized skating areas.

Freestyle 1 - Advanced Freestyle

Once a skater has mastered the basic skills, skaters can begin Freestyle level classes. Each level is comprised of a variety of advanced skating skills, transitions, spins, and jumps that build on the previous skills. These levels are taught in a positive and interactive group format. Instructors will focus on quality and mastery of skills.

Hockey

Our classes teach aspiring hockey players the skills necessary to enjoy the great game of hockey. Whether your child's objective is to improve their hockey skills or learn skating on a recreational basis, we have something for them. Our highly skilled professional staff have years of experience teaching young hockey players the fundamentals of hockey and skating. All participants must wear a hockey helmet with a faceguard during class. Loaner helmets will not be available.



Winnetka Skating Club

The mission of the Winnetka Skating Club (WSC) is to provide a recreational skating club that promotes the sport of skating and fosters social interaction between all ages and levels of skaters. Hockey players are also welcome to join! Through the enjoyment and skills of skating, we facilitate a safe and fun environment at the ice arena, where new friendships and a sense of support for one another are encouraged! 2024 - 2025 membership is valid through September 2, 2025.

WSC Fee

\$100/\$120

WSC Jacket

\$35

Benefits

- » Opportunity to have fun and make new friends
- » A 10% discount on skating classes
- » A 20% discount on freestyle coupon books
- » WSC gear
- » Free Friday Night Skates exclusively for WSC members, which include one hour of supervised skating
- » Free participation in exhibitions
- » Performing a special group number in the Annual Ice Show
- » Representing the Winnetka Ice Arena in the annual Fourth of July parade
- » Email updates on upcoming events

Friday Night Skates

December 13, January 17, March 7, April 11

Exhibitions

December 14, February 15

For more information, contact Christine Condon at ccondon@winpark.org or (847) 716-1295.



Winnetka Competitive Team

Competition events are open to any individual or professional members of ISI, from Tots to Adults. Throughout the year ISI rinks host regional competitions that all follow the same philosophy: participation, not elimination.

Skaters must be current ISI members in order to compete. Skaters have the opportunity to compete in Solo, Artistic, Footwork, Interpretive, Spotlight, Couples Events, along with others. Competitions are held at various rinks throughout the year. Competition participation is purely voluntary.

We encourage all skaters to participate in competitions. Skaters, regardless of their skating level, are able to experience the thrill of performing for an audience, gain self esteem and confidence, while competing for the fun of it on a level playing field. Competitions gives the skater the opportunity to measure their skating skills against other skaters at the same level and age group from different ice rinks.

For more information, contact the skating director, Christine Condon, at ccondon@winpark.org.

Tots

AGES: 3-5.5

Tot Skating is designed for beginning skaters. Class maneuvers are broken down into smaller parts so they can be more easily learned. Instruction is given with a focus on having fun on the ice.

Tot 1

PREREQUISITE: No prior skating experience required.

Winter

Activity #	Day	Date	Time	Res/Non-Res
S33001-01	Sat	1/4-3/15	8:25-8:55am	\$145/\$185
S33001-02	Mon	1/6-3/17	4-4:30pm	\$160/\$204
S33001-03	Mon	1/6-3/17	5:30-6pm	\$160/\$204
S33001-04	Tue	1/7-3/18	2:30-3pm	\$160/\$204
S33001-05	Wed	1/8-3/19	9:30-10am	\$160/\$204
S33001-06	Wed	1/8-3/19	4:15-4:45pm	\$160/\$204
S33001-07	Thu	1/9-3/20	9:30-10am	\$160/\$204
S33001-08	Thu	1/9-3/20	2:30-3pm	\$160/\$204
S33001-09	Fri	1/10-3/21	4-4:30pm	\$160/\$204
S33001-10	Fri	1/10-3/21	4:30-5pm	\$160/\$204

Spring

Activity #	Day	Date	Time	Res/Non-Res
S43001-01	Sat	4/5-5/17	8:25-8:55am	\$88/\$112
S43001-02	Mon	3/31-5/19	4-4:30pm	\$102/\$130
S43001-03	Mon	3/31-5/19	5:30-6pm	\$102/\$130
S43001-04	Tue	4/1-5/20	2:30-3pm	\$102/\$130
S43001-05	Wed	4/2-5/21	9:30-10am	\$102/\$130
S43001-06	Wed	4/2-5/21	4:15-4:45pm	\$102/\$130
S43001-07	Thu	4/3-5/22	9:30-10am	\$102/\$130
S43001-08	Thu	4/3-5/22	2:30-3pm	\$102/\$130
S43001-09	Fri	4/4-5/23	4-4:30pm	\$102/\$130
S43001-10	Fri	4/4-5/23	4:30-5pm	\$102/\$130

Tot 2

PREREQUISITE: Tot 1 and below

Winter

Activity #	Day	Date	Time	Res/Non-Res
S33002-01	Sat	1/4-3/15	8:25-8:55am	\$145/\$185
S33002-02	Mon	1/6-3/17	4-4:30pm	\$160/\$204
S33002-03	Mon	1/6-3/17	5:30-6pm	\$160/\$204
S33002-04	Tue	1/7-3/18	2:30-3pm	\$160/\$204
S33002-05	Wed	1/8-3/19	9:30-10am	\$160/\$204
S33002-06	Wed	1/8-3/19	4:15-4:45pm	\$160/\$204
S33002-07	Thu	1/9-3/20	9:30-10am	\$160/\$204
S33002-08	Thu	1/9-3/20	2:30-3pm	\$160/\$204
S33002-09	Fri	1/10-3/21	4-4:30pm	\$160/\$204
S33002-10	Fri	1/10-3/21	4:30-5pm	\$160/\$204

Spring

Activity #	Day	Date	Time	Res/Non-Res
S43002-01	Sat	4/5-5/17	8:25-8:55am	\$88/\$112
S43002-02	Mon	3/31-5/19	4-4:30pm	\$102/\$130
S43002-03	Mon	3/31-5/19	5:30-6pm	\$102/\$130
S43002-04	Tue	4/1-5/20	2:30-3pm	\$102/\$130
S43002-05	Wed	4/2-5/21	9:30-10am	\$102/\$130
S43002-06	Wed	4/2-5/21	4:15-4:45pm	\$102/\$130
S43002-07	Thu	4/3-5/22	9:30-10am	\$102/\$130
S43002-08	Thu	4/3-5/22	2:30-3pm	\$102/\$130
S43002-09	Fri	4/4-5/23	4-4:30pm	\$102/\$130
S43002-10	Fri	4/4-5/23	4:30-5pm	\$102/\$130

Tot 3

PREREQUISITE: Tot 2 and below

Winter

Activity #	Day	Date	Time	Res/Non-Res
S33003-01	Sat	1/4-3/15	8:25-8:55am	\$145/\$185
S33003-02	Mon	1/6-3/17	4-4:30pm	\$160/\$204
S33003-03	Mon	1/6-3/17	5:30-6pm	\$160/\$204
S33003-04	Tue	1/7-3/18	2:30-3pm	\$160/\$204
S33003-05	Wed	1/8-3/19	9:30-10am	\$160/\$204
S33003-06	Wed	1/8-3/19	4:15-4:45pm	\$160/\$204
S33003-07	Thu	1/9-3/20	9:30-10am	\$160/\$204
S33003-08	Thu	1/9-3/20	2:30-3pm	\$160/\$204
S33003-09	Fri	1/10-3/21	4-4:30pm	\$160/\$204
S33003-10	Fri	1/10-3/21	4:30-5pm	\$160/\$204

Spring

Activity #	Day	Date	Time	Res/Non-Res
S43003-01	Sat	4/5-5/17	8:25-8:55am	\$88/\$112
S43003-02	Mon	3/31-5/19	4-4:30pm	\$102/\$130
S43003-03	Mon	3/31-5/19	5:30-6pm	\$102/\$130
S43003-04	Tue	4/1-5/20	2:30-3pm	\$102/\$130
S43003-05	Wed	4/2-5/21	9:30-10am	\$102/\$130
S43003-06	Wed	4/2-5/21	4:15-4:45pm	\$102/\$130
S43003-07	Thu	4/3-5/22	9:30-10am	\$102/\$130
S43003-08	Thu	4/3-5/22	2:30-3pm	\$102/\$130
S43003-09	Fri	4/4-5/23	4-4:30pm	\$102/\$130
S43003-10	Fri	4/4-5/23	4:30-5pm	\$102/\$130

Tot 4

PREREQUISITE: Tot 3 and below

Winter

Activity #	Day	Date	Time	Res/Non-Res
S33004-01	Sat	1/4-3/15	8:25-8:55am	\$145/\$185
S33004-02	Mon	1/6-3/17	4-4:30pm	\$160/\$204
S33004-03	Mon	1/6-3/17	5:30-6pm	\$160/\$204
S33004-04	Tue	1/7-3/18	2:30-3pm	\$160/\$204
S33004-05	Wed	1/8-3/19	9:30-10am	\$160/\$204
S33004-06	Wed	1/8-3/19	4:15-4:45pm	\$160/\$204
S33004-07	Thu	1/9-3/20	9:30-10am	\$160/\$204
S33004-08	Thu	1/9-3/20	2:30-3pm	\$160/\$204
S33004-09	Fri	1/10-3/21	4-4:30pm	\$160/\$204
S33004-10	Fri	1/10-3/21	4:30-5pm	\$160/\$204

Spring

Activity #	Day	Date	Time	Res/Non-Res
S43004-01	Sat	4/5-5/17	8:25-8:55am	\$88/\$112
S43004-02	Mon	3/31-5/19	4-4:30pm	\$102/\$130
S43004-03	Mon	3/31-5/19	5:30-6pm	\$102/\$130
S43004-04	Tue	4/1-5/20	2:30-3pm	\$102/\$130
S43004-05	Wed	4/2-5/21	9:30-10am	\$102/\$130
S43004-06	Wed	4/2-5/21	4:15-4:45pm	\$102/\$130
S43004-07	Thu	4/3-5/22	9:30-10am	\$102/\$130
S43004-08	Thu	4/3-5/22	2:30-3pm	\$102/\$130
S43004-09	Fri	4/4-5/23	4-4:30pm	\$102/\$130
S43004-10	Fri	4/4-5/23	4:30-5pm	\$102/\$130



Pre-Alpha - Delta

AGES: 6-17

Step-by-step progression of skills makes learning fun while improving the skater's confidence on ice. The mastery of these basic skills is required before moving on to higher levels of achievement, and it can take more than one semester to pass each level. Upon completion of these levels, skaters can advance to more specialized skating areas.

Pre-Alpha 1

PREREQUISITE: No prior skating experience required.

Winter

Activity #	Day	Date	Time	Res/Non-Res
S33011-01	Sat	1/4-3/15	8:15-8:55am	\$220/\$280
S33011-02	Mon	1/6-3/17	4-4:45pm	\$242/\$308
S33011-03	Wed	1/8-3/19	4-4:45pm	\$242/\$308
S33011-04	Thu	1/9-3/20	4:45-5:30pm	\$242/\$308

Spring

Activity #	Day	Date	Time	Res/Non-Res
S43011-01	Sat	4/5-5/17	8:15-8:55am	\$132/\$168
S43011-02	Mon	3/31-5/19	4-4:45pm	\$154/\$196
S43011-03	Wed	4/2-5/21	4-4:45pm	\$154/\$196
S43011-04	Thu	4/3-5/22	4:45-5:30pm	\$154/\$196

Pre-Alpha 2

PREREQUISITE: Pre-Alpha 1 or Tot 3

Winter

Activity #	Day	Date	Time	Res/Non-Res
S33012-01	Sat	1/4-3/15	8:15-8:55am	\$220/\$280
S33012-02	Mon	1/6-3/17	4-4:45pm	\$242/\$308
S33012-03	Wed	1/8-3/19	4-4:45pm	\$242/\$308
S33012-04	Thu	1/9-3/20	4:45-5:30pm	\$242/\$308

Spring

Activity #	Day	Date	Time	Res/Non-Res
S43012-01	Sat	4/5-5/17	8:15-8:55am	\$132/\$168
S43012-02	Mon	3/31-5/19	4-4:45pm	\$154/\$196
S43012-03	Wed	4/2-5/21	4-4:45pm	\$154/\$196
S43012-04	Thu	4/3-5/22	4:45-5:30pm	\$154/\$196

Alpha 1

PREREQUISITE: Pre-Alpha 2 and below.

Winter

Activity #	Day	Date	Time	Res/Non-Res
S33013-01	Sat	1/4-3/15	8:55-9:40am	\$220/\$280
S33013-02	Mon	1/6-3/17	4:45-5:30pm	\$242/\$308
S33013-03	Wed	1/8-3/19	4:45-5:30pm	\$242/\$308
S33013-04	Thu	1/9-3/20	4:45-5:30pm	\$242/\$308

Spring

Activity #	Day	Date	Time	Res/Non-Res
S43013-01	Sat	4/5-5/17	8:55-9:40am	\$132/\$168
S43013-02	Mon	3/31-5/19	4:45-5:30pm	\$154/\$196
S43013-03	Wed	4/2-5/21	4:45-5:30pm	\$154/\$196
S43013-04	Thu	4/3-5/22	4:45-5:30pm	\$154/\$196

Alpha 2

PREREQUISITE: Alpha 1 and below.

Winter

Activity #	Day	Date	Time	Res/Non-Res
S33014-01	Sat	1/4-3/15	8:55-9:40am	\$220/\$280
S33014-02	Mon	1/6-3/17	4:45-5:30pm	\$242/\$308
S33014-03	Wed	1/8-3/19	4:45-5:30pm	\$242/\$308
S33014-04	Thu	1/9-3/20	4:45-5:30pm	\$242/\$308

Spring

Activity #	Day	Date	Time	Res/Non-Res
S43014-01	Sat	4/5-5/17	8:55-9:40am	\$132/\$168
S43014-02	Mon	3/31-5/19	4:45-5:30pm	\$154/\$196
S43014-03	Wed	4/2-5/21	4:45-5:30pm	\$154/\$196
S43014-04	Thu	4/3-5/22	4:45-5:30pm	\$154/\$196



Beta 1

PREREQUISITE: Alpha 2 and below

Winter

Activity #	Day	Date	Time	Res/Non-Res
S33015-01	Sat	1/4-3/15	8:55-9:40am	\$220/\$280
S33015-02	Mon	1/6-3/17	4:45-5:30pm	\$242/\$308
S33015-03	Wed	1/8-3/19	4:45-5:30pm	\$242/\$308
S33015-04	Thu	1/9-3/20	4:45-5:30pm	\$242/\$308

Spring

Activity #	Day	Date	Time	Res/Non-Res
S43015-01	Sat	4/5-5/17	8:55-9:40am	\$132/\$168
S43015-02	Mon	3/31-5/19	4:45-5:30pm	\$154/\$196
S43015-03	Wed	4/2-5/21	4:45-5:30pm	\$154/\$196
S43015-04	Thu	4/3-5/22	4:45-5:30pm	\$154/\$196

Beta 2

PREREQUISITE: Beta 1 and below

Winter

Activity #	Day	Date	Time	Res/Non-Res
S33016-01	Sat	1/4-3/15	8:55-9:40am	\$220/\$280
S33016-02	Mon	1/6-3/17	5:15-6pm	\$242/\$308
S33016-03	Wed	1/8-3/19	4:45-5:30pm	\$242/\$308
S33016-04	Thu	1/9-3/20	4:45-5:30pm	\$242/\$308

Spring

Activity #	Day	Date	Time	Res/Non-Res
S43016-01	Sat	4/5-5/17	8:55-9:40am	\$132/\$168
S43016-02	Mon	3/31-5/19	5:15-6pm	\$154/\$196
S43016-03	Wed	4/2-5/21	4:45-5:30pm	\$154/\$196
S43016-04	Thu	4/3-5/22	4:45-5:30pm	\$154/\$196

Gamma

PREREQUISITE: Beta 2 and below

Winter

Activity #	Day	Date	Time	Res/Non-Res
S33017-01	Sat	1/4-3/15	8:55-9:40am	\$220/\$280
S33017-02	Mon	1/6-3/17	5:15-6pm	\$242/\$308
S33017-03	Wed	1/8-3/19	4:45-5:30pm	\$242/\$308
S33017-04	Thu	1/9-3/20	4-4:45pm	\$242/\$308

Spring

Activity #	Day	Date	Time	Res/Non-Res
S43017-01	Sat	4/5-5/17	8:55-9:40am	\$132/\$168
S43017-02	Mon	3/31-5/19	5:15-6pm	\$154/\$196
S43017-03	Wed	4/2-5/21	4:45-5:30pm	\$154/\$196
S43017-04	Thu	4/3-5/22	4-4:45pm	\$154/\$196

Delta

PREREQUISITE: Gamma and below

Winter

Activity #	Day	Date	Time	Res/Non-Res
S33018-01	Sat	1/4-3/15	8:55-9:40am	\$220/\$280
S33018-02	Mon	1/6-3/17	5:15-6pm	\$242/\$308
S33018-03	Wed	1/8-3/19	4:45-5:30pm	\$242/\$308
S33018-04	Thu	1/9-3/20	4-4:45pm	\$242/\$308

Spring

Activity #	Day	Date	Time	Res/Non-Res
S43018-01	Sat	4/5-5/17	8:55-9:40am	\$132/\$168
S43018-02	Mon	3/31-5/19	5:15-6pm	\$154/\$196
S43018-03	Wed	4/2-5/21	4:45-5:30pm	\$154/\$196
S43018-04	Thu	4/3-5/22	4-4:45pm	\$154/\$196

Freestyle

AGES: 6-17

Once a skater has mastered the basic skills, skaters can begin Freestyle level classes. Each level is comprised of a variety of advanced skating skills, transitions, spins and jumps that build on the previous skills. These levels are taught in a positive and interactive group format. Instructors will focus on quality and mastery of skills.

Skaters must come dressed in appropriate skating attire for all classes (e.g., skating dresses, tights, leggings, etc.) and hair should be pulled away from the face.

Skaters who have passed a test at another facility must be re-tested by the figure skating director. Tests may be arranged by contacting Christine Condon at (847) 716-1295 or ccondon@winpark.org

Freestyle 1

PREREQUISITE: Delta and below

Winter

Activity #	Day	Date	Time	Res/Non-Res
S33021-01	Thu	1/9-3/20	4-4:45pm	\$264/\$330

Spring

Activity #	Day	Date	Time	Res/Non-Res
S43021-01	Thu	4/3-5/22	4-4:45pm	\$168/\$210

Need Picture.

Freestyle 2

PREREQUISITE: Freestyle 1 and below

Winter

Activity #	Day	Date	Time	Res/Non-Res
S33022-01	Thu	1/9-3/20	4-4:45pm	\$264/\$330

Spring

Activity #	Day	Date	Time	Res/Non-Res
S43022-01	Thu	4/3-5/22	4-4:45pm	\$168/\$210

Freestyle 3

PREREQUISITE: Freestyle 2 and below

Winter

Activity #	Day	Date	Time	Res/Non-Res
S33023-01	Tue	1/7-3/18	4:55-5:40pm	\$264/\$330

Spring

Activity #	Day	Date	Time	Res/Non-Res
S43023-01	Tue	4/1-5/20	4:55-5:40pm	\$168/\$210

Freestyle 4

PREREQUISITE: Freestyle 3 and below

Winter

Activity #	Day	Date	Time	Res/Non-Res
S33024-01	Tue	1/7-3/18	4:55-5:40pm	\$264/\$330

Spring

Activity #	Day	Date	Time	Res/Non-Res
S43024-01	Tue	4/1-5/20	4:55-5:40pm	\$168/\$210

Freestyle 5

PREREQUISITE: Freestyle 4 and below

Winter

Activity #	Day	Date	Time	Res/Non-Res
S33025-01	Tue	1/7-3/18	4:55-5:40pm	\$264/\$330

Spring

Activity #	Day	Date	Time	Res/Non-Res
S43025-01	Tue	4/1-5/20	4:55-5:40pm	\$168/\$210

Advanced Freestyle

PREREQUISITE: Freestyle 5 and below

Winter

Activity #	Day	Date	Time	Res/Non-Res
S33026-01	Tue	1/7-3/18	4:55-5:40pm	\$264/\$330

Spring

Activity #	Day	Date	Time	Res/Non-Res
S43026-01	Tue	4/1-5/20	4:55-5:40pm	\$168/\$210

Skating Skills

AGES: 6-17

PREREQUISITE: Limited to skaters who have not passed their Juvenile moves.

Combines instruction and practice with an introduction to the USFS test structure. This class is for skaters who have not passed the Pre-Juvenile MIF test

Winter

Activity #	Day	Date	Time	Res/Non-Res
S33031-01	Fri	1/10-3/21	7:30-8am	\$176/\$220

Spring

Activity #	Day	Date	Time	Res/Non-Res
S43031-01	Fri	4/4-5/23	7:30-8am	\$112/\$140

Jump and Spin Class

AGES: 6-17

PREREQUISITE: Freestyle 1

This class focuses on proper jump and spin techniques. Exercises will be taught to accomplish their jump/spin goals while being introduced to new jumps/spins.

Winter

Activity #	Day	Date	Time	Res/Non-Res
S33032-01	Mon	1/6-3/17	4:30-5:15pm	\$264/\$330

Spring

Activity #	Day	Date	Time	Res/Non-Res
S43032-01	Mon	3/31-5/19	4:30-5:15pm	\$168/\$210

Performance Skating

AGES: 6-17

PREREQUISITE: Delta

This class is designed to introduce skaters to individual and small group performances in ice shows, exhibitions and competitions. Emphasis will be on creativity, movement & expressions while enhancing a skaters' overall performance.

Winter

Activity #	Day	Date	Time	Res/Non-Res
S33033-01	Thu	1/9-3/20	4:45-5:30pm	\$264/\$330

Spring

Activity #	Day	Date	Time	Res/Non-Res
S43033-01	Thu	4/3-5/22	4:45-5:30pm	\$168/\$210

Adult All Levels Skating

AGES: 18+

No experience necessary, beginner through advanced levels welcome. Learn the basics to enjoy recreational skating or develop a solid foundation for learning more advanced skills.

Winter

Activity #	Day	Date	Time	Res/Non-Res
S33034-01	Thu	1/9-3/20	10-10:45am	\$242/\$308

Spring

Activity #	Day	Date	Time	Res/Non-Res
S43034-01	Thu	4/3-5/22	10-10:45am	\$154/\$196

Off Ice Training Class

AGES: 6-17

This class is designed to help skaters improve their skating skills while focusing on plyometric strength, core strength, balance, agility, and flexibility while utilizing various dance training principles to better understand timing and rhythmic action.

Winter

Activity #	Day	Date	Time	Res/Non-Res
S33035-01	Tue	1/7-3/18	5:45-6:30pm	\$264/\$330

Spring

Activity #	Day	Date	Time	Res/Non-Res
S43035-01	Tue	1/7-3/18	5:45-6:30pm	\$168/\$210

Freestyle Sessions

RECOMMENDED FOR FREESTYLE SKATERS.

Practice ice available! Have your child start the day with some exercise and take advantage of this opportunity to improve their skills. Private lessons are available during these sessions.

FEE: \$12 Per Session

\$96 Book of 10 Coupons*

*Buy five or more coupon books and pay \$78/book

No Sessions: 11/29, 12/23 (3pm), 12/25, 12/30 (3pm), 1/1

Level	Days	Dates	Time
High	M	9/9 - 5/19	6-7:30am
Open	M	9/9 - 5/19	7:30-9am
Open	M	9/9 - 5/19	3-4pm
High	W	9/4 - 5/21	6-7:30am
Open	W	9/4 - 5/21	7:30-9am
High	F	9/6 - 5/23	6-9am

High Freestyle

- » Only Freestyle 1 and higher may practice
- » Gamma and higher may have privates – these times will teach them Freestyle etiquette

Open Freestyle

- » Beta and higher may practice
- » Alpha levels and up may have privates – no skating aides allowed

Tot level skaters or hockey skaters may not attend Freestyle sessions.

Private Lessons

Private lessons are available to all skaters, regardless of age or skill level. Private lessons are a supplement to group lessons and an opportunity for personalized approach focusing on a skater's individual needs. Skaters benefit from private lessons, which will help them progress at an accelerated pace with fewer distractions. Private lessons also prepare skaters for skating competitions and advanced testing.

For more information, contact the skating director, Christine Condon, at ccondon@winpark.org.

Season Pass

VALID SEPTEMBER 3, 2024 - AUGUST 28, 2025

May be used for all freestyle, public skate, and private lesson ice.

Fee: \$750



Warriors Learn to Skate Hockey

AGES: 3-8

PREREQUISITE: No prior skating experience required.

Required Equipment: Traditional or Hockey skates available to rent, hockey helmet with cage and winter gloves or hockey gloves. Loaner helmets will not be available.

In conjunction with the Winnetka Hockey Club, this program gives brand new and novice skaters the opportunity to learn skating for a future in our Learn to Play Program, a pathway to the Winnetka Warriors! Work with Winnetka Warrior coaches on the basics of skating and developing the skating skills required to graduate to the Learn To Play Program.

Winter

Activity #	Day	Date	Time	Res/Non-Res
H33001-01	Sat	1/4-3/22	8:25am-8:55am	\$145/\$185
H33001-02	Wed	1/8-3/19	5pm-5:30pm	\$160/\$204
H33001-03	Fri	1/10-3/21	4pm-4:30pm	\$160/\$204

Spring

Activity #	Day	Date	Time	Res/Non-Res
H43001-01	Sat	4/5-5/17	8:25am-8:55am	\$88/\$112
H43001-02	Wed	4/2-5/21	5pm-5:30pm	\$102/\$130
H43001-03	Fri	4/4-5/23	4pm-4:30pm	\$102/\$130

Warriors Learn to Play Hockey

AGES: 5-12

PREREQUISITE: Tots, Pre-Alpha, Warriors Learn to Skate Hockey, or Instructor Recommendation.

Required Equipment: Hockey Helmet with Full Cage, Hockey Gloves, Hockey Elbow pads and shin guards, hockey skates. (Rentals are Available)

In conjunction with the Winnetka Hockey Club, this program teaches hockey skills from learning how to hold the hockey stick, all the way to stickhandling and shooting skills. This program is a pathway to the Winnetka Warriors house league and travel programs.

Winter

Activity #	Day	Date	Time	Res/Non-Res
H33011-01	Sat	1/4-3/22	8:55am-9:40am	\$220/\$280
H33011-02	Wed	1/8-3/19	4:15pm-5pm	\$242/\$308
H33011-03	Fri	1/10-3/21	4:30pm-5:15pm	\$242/\$308

Spring

Activity #	Day	Date	Time	Res/Non-Res
H43011-01	Sat	4/5-5/17	8:55am-9:40am	\$132/\$168
H43011-02	Wed	4/2-5/21	4:15pm-5pm	\$154/\$196
H43011-03	Fri	4/4-5/23	4:30pm-5:15pm	\$154/\$196

Special Events



Turkey Day Skate

THURSDAY, NOVEMBER 28 | 10:30AM - 1PM

Burn off a few calories before Thanksgiving dinner and enjoy a special skate day at the Winnetka Ice Arena. Admission is \$2 per skater, skates may be rented for \$4.

Ugly Sweater Holiday Skate

SATURDAY, DECEMBER 14 | 2 - 3:20PM

Wear your ugliest holiday sweater and take a few laps skating to festive holiday music. Be sure to stick around for the Holiday Skating Exhibition following the skate.

Holiday Skating Exhibition

SATURDAY, DECEMBER 14 | 3:30 - 4:30PM

Tot through Free Skate program participants will demonstrate their skills in our annual Holiday Exhibition.

Spring Skating Exhibition

SATURDAY, FEBRUARY 15 | 3:30 - 4:30PM

Tot through Free Skate program participants will demonstrate their skills in our Spring Exhibition.



Annual Ice Show

FRIDAY, MAY 2 + SATURDAY, MAY 3, 2025

Any skater enrolled in the Winter and Spring sessions is encouraged to participate. Rehearsals will take place in the month of April. More information will be available in December.

Affiliate Organizations



Winnetka Hockey Club (WHC)

Andy McNerney, President | www.winnetkahockey.com | (847) 446-9004

Since our inception in 1972, the Winnetka Hockey Club has remained true to its original mission to provide community based hockey to the children of Winnetka, Glencoe, Kenilworth, and Northfield. We take great pride in offering both recreational (house) and competitive (travel) programs to meet the needs of all interest levels. We do this through the combined efforts of our Board of Directors, professional staff, and volunteer coaches.

Why Youth Hockey?

- » **Fast Paced:** Games generally last one hour. It's a great sport in the winter when physical activity may be limited.
- » **Teamwork:** Hockey requires that your child learn to cooperate with teammates.
- » **Lifetime Sport:** Hockey is a sport that many play into their 50s and 60s.
- » **Community:** Your child will play with their schoolmates and make new friends through hockey. Winnetka hockey is widely respected within the community for its organization and structure.
- » **Respect:** At the core of our sport is respect for teammates, respect for the opposition, respect for the officials, and respect for the game.



Skokie Valley Skating Club (SVSC)

Elaine Paque, President | skokievalleyskatingclub.com | elaine.paque@gmail.com

The Home Club of Olympians Jason Brown and Bradie Tennell. The SVSC Serves 650 skaters that test and compete in singles, pairs, ice dance, and synchronized skating activities.



New Trier Hockey Club (NTHC)

Adam Finger, President | newtrierhockey.com

The NTHC has five boys and two girls teams that compete throughout the Chicago area. The NTHC is considered one of the top High School programs in Chicago and has won 26 State Championships.





530 Hibbard Road, Winnetka, IL 60093
(847) 501-2065

MANAGER

Pat Fragassi, PTR
pfragassi@winpark.org
(847) 501-2066

DIRECTOR OF TENNIS

Alexander Shubny, USPTA, PTR, IPTPA
ashubny@winpark.org
(847) 501-6135

ASSISTANT MANAGER

Joe Holguin, USPTA, PTR
jholguin@winpark.org
(847) 501-2058

Hours

Monday - Thursday: 6:30am to 10pm

Friday through Sunday closing hours may vary based on demand.

Holiday Closures/Hours

- » November 28 (Thanksgiving): Closed
- » December 24 (Christmas Eve): 9am - 2pm
- » December 25 (Christmas): Closed



Court Fees + Reservations

Indoor Courts

	DAYS/TIMES		MEMBER COURT RATE (1 HR)	NON-MEMBER COURT RATE (1 HR)
Prime Time	Mon-Th	8:30am-8:30pm	\$35	\$50
	Fri-Sun	8:30am-6pm		
Non-Prime	Mon-Sun	6:30-8:30am	\$24	\$40
	Mon-Th	8:30-10pm		
	Fri-Sun	6pm-Close		
Day of Play	Mon-Fri	12-4pm	\$20	\$20 + \$5 guest fee per player
Jr. After School	Mon-Fri	3-6pm	\$16	\$24

Outdoor Courts

HOURS	WALK-ONS*	MEMBER	NON-MEMBERS
1	\$0	\$0	\$0

Reservations

Members: If reserving seven days in advance, reservations will be accepted in-person at 6:30am + by phone at 8am.

Non-Members: Reservations can be made no more than 48 hours before start time.

Indoor court + outdoor court time is limited to 1.5 hours. Extra time may be booked on the day of play.

All players must check-in at the front desk before playing and are responsible for the full court fee unless cancelations are made within 24 hours of the reserved court.

Players must wear appropriate tennis attire and shoes on courts.

Ball Machine (Indoors Only)

Reservations can be made at the front desk.

Fee: \$5/hour (plus court fee)

"Day Of" Play Deal (Indoors Only)

MONDAY - FRIDAY | 12 - 4PM

Members pay \$20/hour total court fee. Additional \$5 for non-member guest fee. Contact the front desk for more information: (847) 501-2065 ex. 0

2024-2025 Membership

Effective September 1, 2024 through August 31, 2025

Resident

Adult	\$165
Junior	\$75

Non-Resident

Adult	\$265
Junior	\$130

Member Benefits

- » Court reservation priority, with the ability to make reservations up to seven days in advance
- » Permanent court time eligibility
- » Entitled to reduced court, private lesson, and group lesson rates*

*Non-resident members receive group lessons at resident rates.

Private + Semi-Private Lessons

Our private and semi-private tennis lessons are offered year-round and give you your choice of day, time, and instructor. Whether you are looking to learn the basics, advance your skills, want one-on-one instruction, or are interested in creating a small group class with friends, our staff will work with you to build a customized option that fits your needs and schedule. All fees listed are per hour. 24-hour notice is required for lesson cancellation. Pricing through 8/31/25.

To learn more or schedule your lesson, contact Alexander Shubny, Director of Tennis, at (847) 501-6135.

Permanent Private Lessons: All students participating in a permanent private lesson must be a current member of the facility.

Lessons with Tennis Professionals (1 hour)

Pricing listed is per person.

	1 Person	2 People	3 People	4 People
Member	\$97	\$56	\$42	\$33
Non-Member	\$104	\$62.25	\$48.50	\$41

Lessons with Director of Tennis (1 hour)

Pricing listed is per person.

	1 Person	2 People	3 People	4 People
Member	\$106	\$59.75	\$44.25	\$36
Non-Member	\$112	\$68	\$53	\$43.25



Winter Registration Dates

Priority for current students:
until November 10

Transfer Week: November 11-15

Residents + Non-Resident Members:
November 16

Non-Resident Non-Members:
November 18

Spring Registration Dates

Priority for current students:
until February 25

Transfer Week: February 26-March 1

**Residents + Non-Resident
Members:** March 2

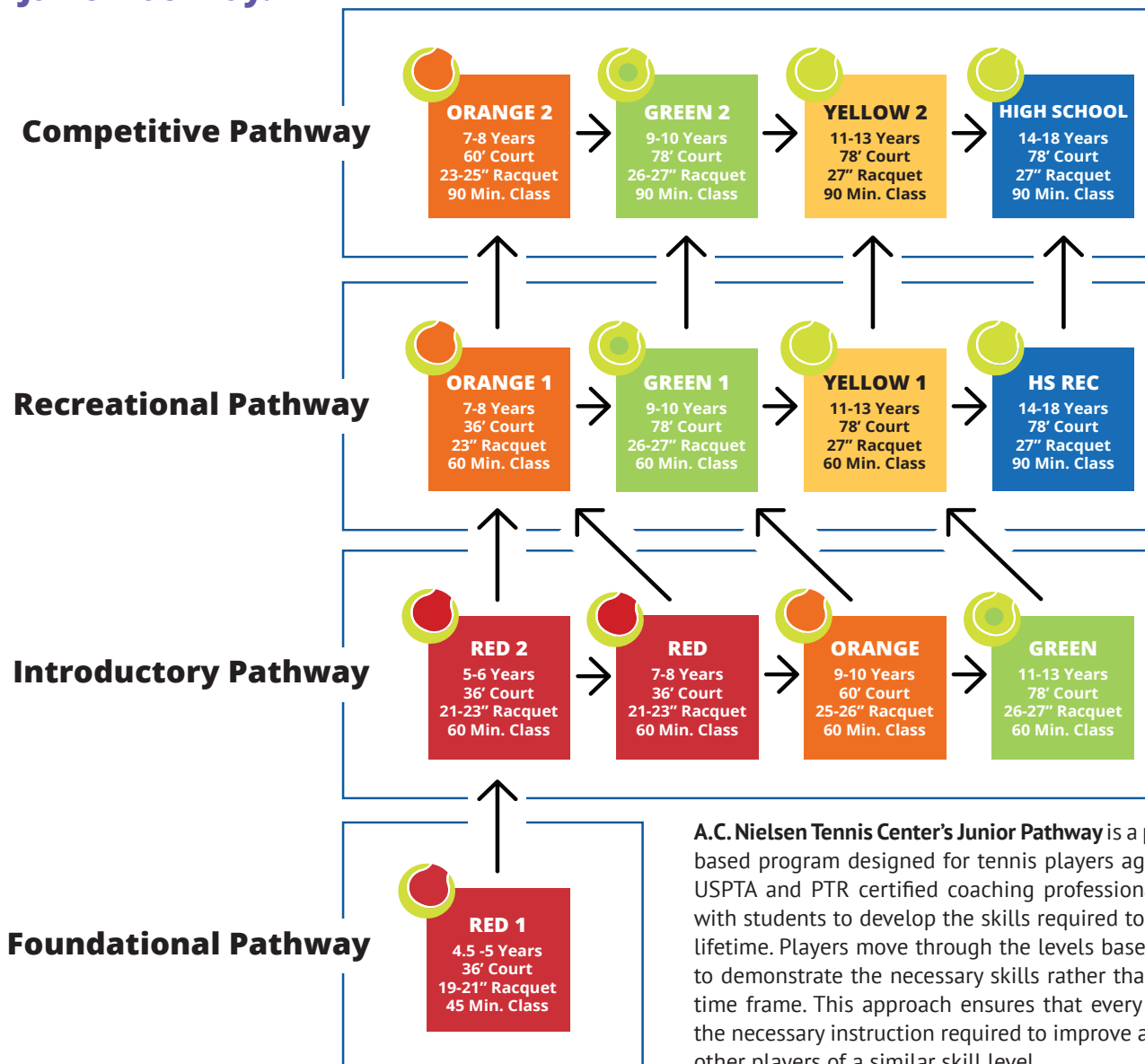
Non-Resident Non-Members: March 4

Group Lessons

Group lessons, camps, and clinics are offered year-round for both juniors and adults. Classes are available for all skill levels and include a mix of skill development and game-based drills.

- » **Minimum enrollment:** Classes may be canceled if registration does not meet the minimum enrollment of three students. Patrons will receive full refunds for canceled classes.
- » **Late registration:** Late registration is permitted on a space-available basis. The class fee will be prorated.
- » **Class make-ups:** Class make-ups are not given for missed junior classes. Adult class make ups are not guaranteed, but our staff will do their best to accommodate. Refunds or account credits will not be issued for missed classes, except those missed due to injury.
- » **Attire:** Students must wear tennis shoes. Tennis apparel is preferred. Students should turn off cell phones during class.

Junior Pathway:



Junior Group Lessons



Foundational Pathway

Red 1

Activity #	Day	Date	Time	Res/Non-Res
T44100-1	Tue	12/3-3/18	4-4:45pm	\$404/\$537
T44100-2	Tue	12/3-3/18	4:45-5:30pm	\$404/\$537
T44100-3	Thu	12/5-3/20	4:15-5pm	\$404/\$537
T44100-4	Fri	12/6-3/21	3:30-4:15pm	\$404/\$537
T44100-5	Fri	12/6-3/21	4:15-5pm	\$404/\$537
T44100-6	Sat	12/7-3/15	11:30-12:15pm	\$348/\$463

Introductory Pathway

Red 2

Activity #	Day	Date	Time	Res/Non-Res
T44101-1	Mon	12/2-3/17	4-5pm	\$399/\$479
T44101-2	Tue	12/3-3/18	4-5pm	\$399/\$479
T44101-3	Wed	12/4-3/19	4-5pm	\$399/\$479
T44101-4	Thu	12/5-3/20	4-5pm	\$399/\$479
T44101-5	Fri	12/6-3/21	4-5pm	\$399/\$479
T44101-6	Sat	12/7-3/15	11:30-12:30pm	\$343/\$410

Red

Activity #	Day	Date	Time	Res/Non-Res
T44102-1	Mon	12/2-3/17	4-5pm	\$399/\$479
T44102-2	Tue	12/3-3/18	4-5pm	\$399/\$479
T44102-3	Wed	12/4-3/19	4-5pm	\$399/\$479
T44102-4	Thu	12/5-3/20	4-5pm	\$399/\$479
T44102-5	Fri	12/6-3/21	4-5pm	\$399/\$479
T44102-6	Sat	12/7-3/15	11:30am-12:30pm	\$343/\$410

Orange

Activity #	Day	Date	Time	Res/Non-Res
T44104-1	Mon	12/2-3/17	4-5pm	\$399/\$479
T44104-2	Tue	12/3-3/18	4-5pm	\$399/\$479
T44104-5	Fri	12/6-3/21	4-5pm	\$399/\$479

Green

Activity #	Day	Date	Time	Res/Non-Res
T44105-2	Tue	12/3-3/18	5-6pm	\$399/\$479

Recreational Pathway

Orange 1

Activity #	Day	Date	Time	Res/Non-Res
T44103-1	Mon	12/2-3/17	4-5pm	\$399/\$479
T44103-2	Tue	12/3-3/18	4-5pm	\$399/\$479
T44103-3	Wed	12/4-3/19	4-5pm	\$399/\$479
T44103-4	Thu	12/5-3/20	4-5pm	\$399/\$479
T44103-5	Fri	12/6-3/21	4-5pm	\$399/\$479
T44103-6	Sat	12/7-3/17	11:30am-12:30pm	\$343/\$410

Green 1

Activity #	Day	Date	Time	Res/Non-Res
T44106-1	Mon	12/2-3/17	5-6pm	\$399/\$479
T44106-2	Tue	12/3-3/18	5-6pm	\$399/\$479
T44106-3	Wed	12/4-3/19	5-6pm	\$399/\$479
T44106-4	Thu	12/5-3/20	5-6pm	\$399/\$479
T44106-5	Fri	12/6-3/21	5-6pm	\$399/\$479

Yellow 1

Activity #	Day	Date	Time	Res/Non-Res
T44107-1	Mon	12/2-3/17	3-4pm	\$399/\$479
T44107-2	Mon	12/2-3/17	6-7pm	\$399/\$479
T44107-3	Tue	12/3-3/18	6-7pm	\$399/\$479
T44107-4	Wed	12/4-3/19	6-7pm	\$399/\$479
T44107-5	Thu	12/5-3/20	6-7pm	\$399/\$479
T44107-6	Fri	12/6-3/21	5-6pm	\$399/\$479

Teen Recreational Tennis

Activity #	Day	Date	Time	Res/Non-Res
T44108-1	Mon	12/2-3/17	7-8:30pm	\$598/\$697



Competitive Pathway

Orange 2

Activity #	Day	Date	Time	Res/Non-Res
T44109-1	Mon	12/2-3/17	4-5:30pm	\$598/\$697
T44109-2	Wed	12/4-3/19	4-5:30pm	\$598/\$697
T44109-3	Fri	12/6-3/21	4-5:30pm	\$598/\$697
T44109-4	Sat	12/7-3/15	12:30-2pm	\$513/\$598

Green 2

Activity #	Day	Date	Time	Res/Non-Res
T44110-1	Mon	12/2-3/17	5:30-7pm	\$598/\$697
T44110-2	Wed	12/4-3/19	5:30-7pm	\$598/\$697
T44110-3	Fri	12/6-3/21	5:30-7pm	\$598/\$697
T44110-4	Sat	12/7-3/15	12:30-2pm	\$513/\$598

Yellow 2

Activity #	Day	Date	Time	Res/Non-Res
T44111-1	Mon	12/2-3/17	5:30-7pm	\$598/\$697
T44111-2	Wed	12/4-3/19	4-5:30pm	\$598/\$697
T44111-3	Sat	12/7-3/15	12:30-2pm	\$513/\$598

High School Drill + Play

Activity #	Day	Date	Time	Res/Non-Res
T44112-1	Tue	12/3-3/18	7-8:30pm	\$598/\$697
T44112-2	Thu	12/5-3/20	7-8:30pm	\$598/\$697

In-House Tournament

Green 2 Play Date

Activity #	Day	Date	Time	Res/Non-Res
T34605-2	Sat	11/16	6pm-8pm	\$37

Yellow 2 Play Date

Activity #	Day	Date	Time	Res/Non-Res
T34606-2	Sat	11/16	6pm-8pm	\$37

Winter Break Camp

Ages 5-8

Activity #	Day	Date	Time	Res/Non-Res
T44114-1	M, Th, F	12/23-12/27	9am-11am	\$160/\$225
T44114-2	M, Th, F	12/30-1/3	9am-11am	\$160/\$225

Ages 9-13

Activity #	Day	Date	Time	Res/Non-Res
T44115-1	M, Th, F	12/23-12/27	12pm-3pm	\$210/\$300
T44115-2	M, Th, F	12/30-1/3	12pm-3pm	\$210/\$300

Adult Group Lessons

Adult Group Class Levels

Please contact Alexander Shubny at (847) 501-6135 to schedule an on-court evaluation before registration. Participants may also determine their skill level through the descriptions below.

Beginner (1.0 - 1.5)

Has limited or no experience and is still working on getting the ball in play.

Advanced Beginner (1.5 - 2.0)

Needs on-court experience. Beginning to develop their form and can get the ball in play at a slow pace, but exhibit an inconsistent toss.

Intermediate I (2.0 - 2.5)

Learning to judge where the ball is going but court coverage is weak. Can sustain a short rally at a slow pace with other players of the same ability.

Intermediate II (2.5 - 3.0)

Fairly consistent when hitting medium-paced shots. Can successfully place shots most of the time and sustain a rally, but is not comfortable with all strokes and lacks execution when trying for directional control, depth or power.

Advanced I (3.0 - 3.5)

Has achieved improved stroke dependability with directional control on moderate shots, but still lacks depth and variety. Players are beginning to develop a spin.

Advanced II (3.5 - 4.0)

Has dependable strokes, including directional control and depth on both forehand and backhand shots. Uses various shots, can place the first serve and force some errors, and demonstrates good positioning. May be starting to master the use of power and spins but tends to misjudge ability on difficult shots.

Advanced III (4.0 - 4.5)

Starting to master the use of power and spins. Can control depth, anticipate shots, and handle a mixed sequence of volleys. Frequently has outstanding shots and sound footwork. Tryouts required.

Women's Daytime Classes

Beginner

Activity #	Day	Date	Time	Res/Non-Res
T44200-3	Fri	12/6-3/21	1:30-3pm	\$598/\$697

Advanced Beginner

Activity #	Day	Date	Time	Res/Non-Res
T44201-1	Mon	12/2-3/17	12-1:30pm	\$598/\$697
T44201-2	Tue	12/3-3/18	10:30am-12pm	\$598/\$697
T44201-3	Wed	12/4-3/19	10:30am-12pm	\$598/\$697
T44201-5	Fri	12/6-3/21	12-1:30pm	\$598/\$697

Intermediate I

Activity #	Day	Date	Time	Res/Non-Res
T44202-1	Mon	12/2-3/17	12-1:30pm	\$655/\$867
T44202-2	Tue	12/3-3/18	10:30am-12pm	\$655/\$867
T44202-3	Wed	12/4-3/19	10:30am-12pm	\$655/\$867
T44202-4	Thu	12/5-3/20	10:30am-12pm	\$655/\$867
T44202-5	Fri	12/6-3/21	12-1:30pm	\$655/\$867

Intermediate II

Activity #	Day	Date	Time	Res/Non-Res
T44203-1	Mon	12/2-3/17	12-1:30pm	\$655/\$867
T44203-2	Tue	12/3-3/18	9-10:30am	\$655/\$867
T44203-3	Wed	12/4-3/19	10:30am-12pm	\$655/\$867
T44203-4	Thu	12/5-3/20	10:30am-12pm	\$655/\$867
T44203-5	Fri	12/6-3/21	12-1:30pm	\$655/\$867

Advanced I

Activity #	Day	Date	Time	Res/Non-Res
T44204-1	Mon	12/2-3/17	10:30am-12pm	\$655/\$867
T44204-2	Tue	12/3-3/18	10:30am-12pm	\$655/\$867
T44204-3	Wed	12/4-3/19	9-10:30am	\$655/\$867
T44204-4	Thu	12/5-3/20	9-10:30am	\$655/\$867
T44204-5	Fri	12/6-3/21	10:30am-12pm	\$655/\$867

Advanced II

Activity #	Day	Date	Time	Res/Non-Res
T44205-1	Mon	12/2-3/17	10:30am-12pm	\$655/\$867
T44205-2	Tue	12/3-3/18	10:30am-12pm	\$655/\$867
T44205-3	Wed	12/4-3/19	9-10:30am	\$655/\$867
T44205-4	Thu	12/5-3/20	9-10:30am	\$655/\$867
T44205-5	Fri	12/6-3/21	9-10:30am	\$655/\$867
T44205-6	Fri	12/6-3/21	10:30am-12pm	\$655/\$867

Advanced III

Activity #	Day	Date	Time	Res/Non-Res
T44206-1	Mon	12/2-3/17	9-10:30am	\$655/\$867
T44206-2	Tue	12/3-3/18	1:30-3pm	\$655/\$867
T44206-3	Wed	12/4-3/19	1:30-3pm	\$655/\$867
T44206-4	Thu	12/5-3/20	10:30am-12pm	\$655/\$867

Round Robin

Activity #	Day	Date	Time	Res/Non-Res
T44207-1	Mon	12/2-3/17	12-1:30pm	\$350/\$420
T44207-2	Wed	12/4-3/19	12-1:30pm	\$350/\$420

Women's Evening Classes

Beginner/Advanced Beginner

Activity #	Day	Date	Time	Res/Non-Res
T44399-1	Tue	12/3-3/18	8:30-10pm	\$598/\$697
T44399-2	Thu	12/5-3/20	8:30-10pm	\$598/\$697

Intermediate I/II

Activity #	Day	Date	Time	Res/Non-Res
T44300-1	Tue	12/3-3/18	8:30-10pm	\$655/\$867
T44300-2	Wed	12/4-3/19	8:30-10pm	\$655/\$867
T44300-3	Thu	12/5-3/20	8:30-10pm	\$655/\$867

Advanced I

Activity #	Day	Date	Time	Res/Non-Res
T44301-1	Mon	12/2-3/17	8:30-10pm	\$655/\$867
T44301-2	Thu	12/5-3/20	7-8:30pm	\$655/\$867

Advanced II

Activity #	Day	Date	Time	Res/Non-Res
T44302-1	Tue	12/3-3/18	7-8:30pm	\$655/\$867

Advanced III

Activity #	Day	Date	Time	Res/Non-Res
T44303-1	Mon	12/2-3/17	7-8:30pm	\$655/\$867

Men's Daytime Classes

Early Bird

Activity #	Day	Date	Time	Res/Non-Res
T44208-1	Fri	12/6-3/21	6:30-7:30am	\$437/\$579

Men's Evening Classes

Intermediate/Advanced

Activity #	Day	Date	Time	Res/Non-Res
T44304-1	Tue	12/3-3/18	8:30-10pm	\$655/\$867
T44304-2	Wed	12/4-3/19	7-8:30pm	\$655/\$867

Advanced II

Activity #	Day	Date	Time	Res/Non-Res
T44305-1	Mon	12/2-3/17	8:30-10pm	\$655/\$867
T44305-2	Thu	12/5-3/20	8:30-10pm	\$655/\$867

Advanced III

Activity #	Day	Date	Time	Res/Non-Res
T44306-1	Mon	12/2-3/17	8:30-10pm	\$655/\$867
T44306-2	Wed	12/4-3/19	7-8:30pm	\$655/\$867

Cardio Tennis

Cardio Tennis is an exciting way to get in shape and burn calories on the court. By elevating your heart rate into your aerobic training zone, you can burn more calories than during singles or doubles tennis. Each hour-long class includes a 10 minute warm-up, 40 minutes of aerobic workout, and 10 minutes of cool down. Men and women of all tennis ability levels are welcome. An effective workout will be achieved by all, as tennis pro will challenge each player by his/her ability and fitness level.

Activity #	Day	Date	Time	Res/Non-Res
T44401-1	Mon	12/2-3/17	9:30-10:30am	\$389/\$505
T44401-2	Tue	12/3-3/18	9:30-10:30am	\$389/\$505
T44401-3	Wed	12/4-3/19	9:30-10:30am	\$389/\$505
T44401-4	Thu	12/5-3/20	9:30-10:30am	\$389/\$505
T44401-5	Sat	12/7-3/15	9:30-10:30am	\$321/\$432

Evening Drop In Tennis

Every Tuesday + Thursday | 8:30-10pm | \$15/\$20

This fun and flexible play opportunity is ideal for both men and women interested in playing recreational tennis with a variety of partners and opponents in doubles or singles formats (depending on court availability and participation). Tennis professional, Paul Moran, will be on-site to organize players, facilitate rotations, or fill in to play, if needed.

Space is limited and must be reserved by contacting Paul Moran by email at paulfarleymoran@gmail.com.



Platform Tennis Courts + Hut
Located behind the
A.C. Nielsen Tennis Center at
530 Hibbard Road, Winnetka, IL 60093
(847) 501-2060

FACILITY MANAGER

Paul Schwartz
pschwartz@winpark.org
(847) 501-2062

ASSISTANT MANAGER

James Faedtke
jfaedtke@winpark.org
(847) 501-2059

CERTIFIED INSTRUCTORS

Alan Graham
agraham@winnetkapaddle.com

Meg Gieselman
geeze1967@gmail.com

Robert Stahl
rstahl@winnetkapaddle.com



Platform Tennis Courts

Hours

Monday-Sunday: 7am - 11pm

Book a Court

Online: winpark.org/platform-tennis

Fees

Winnetka Platform Tennis Club Members

- » Fee: No fee first two hours (per day)
- » Full Members may reserve courts seven days in advance and Associate Members five days in advance.

Non-Members

- » Fee: \$25/hour
- » Non-Members may reserve courts three days in advance.
- » Court reservations canceled within 48 hours of reservation will be given a full refund. Refunds will not be given for any other cancelations.

Winnetka Platform Tennis Club

AN AFFILIATE GROUP OF THE WINNETKA PARK DISTRICT | WWW.WINNETKAPADDLE.COM

The Winnetka Platform Tennis Club (WPTC) works to promote and develop platform tennis in the community through social and competitive men's and women's teams, tournaments, social functions, and mixed couple events. As the largest user of the Winnetka Park District platform tennis facility, the club serves more than 500 people, and is one of the largest facilities in the nation.

Memberships offer a variety of benefits, including court reservation privileges, social events, and more.

Contact

President | Colin Cross, president@winnetkapaddle.com

Treasurer | Brad Birchmeier, treasurer@winnetkapaddle.com

Registration | Tanya Hussey, admin@winnetkapaddle.com

League Information

Women's Leagues

Chris Magloci at cmagloci@winnetkapaddle.com

Jill Mark, womenscoordinator-dl@winnetkapaddle.com

Joanne Wallace, womenscoordinator-dl@winnetkapaddle.com

Sonia Patterson, womenscoordinator-nl@winnetkapaddle.com

Men's Leagues

Colin Cross, president@winnetkapaddle.com

Mike Benson at mbenson@winnetkapaddle.com

Our Pros

Contact one of our pros to book team, group, + private lessons.

Chris Magloci at cmagloci@winnetkapaddle.com

Mike Benson at mbenson@winnetkapaddle.com

Men's Leagues

WPTC Men's League

SKILL LEVEL: Beginner to advanced

WPTC men participate in the CPTC weeknight league and the Sunday night North Shore League. The weeknight teams play in the evening on Tuesday, Wednesday, or Thursday. Registration for the 2024-2025 season is open.

Visit winnetkapaddle.com/mens-paddle for more info

Women's Leagues

WPTC Women's League

SKILL LEVEL: Beginner to advanced

WPTC women participate in the CNSWPL Monday Night and Day Leagues. Day league teams play on Thursday or Friday. Registration for the 2024-2025 season is open.

Visit winnetkapaddle.com/womens-paddle for more info

Need more info?

For complete league schedules/descriptions and member information, visit winnetkapaddle.com

Group Lessons

Registration

RESIDENTS: December 3, 2024

NON-RESIDENTS: December 10, 2024

Register online or in-person at the Winnetka Ice Arena (490 Hibbard Road). See page 3 for complete registration information.

NO CLASS: 4/20

Adult Group Lessons Skill Levels

Prime Time - All Levels

This program is for women of all skill levels. Students will focus on developing fundamental skills and strategies.

Beginner 1

At this stage, players are able to participate in point play, but need to learn the basic fundamentals of stroke technique.

Beginner 2

At this stage, players are able to keep the ball in play more frequently, but need to work on basic court positioning and consistency.

Intermediate

At this stage, students have consistent swings, but lack variety or depth and struggle to keep the ball in play when adding pace. They are more comfortable lobbing off the deck, and can occasionally make an easy screen shot.



Women's Paddle Group Lessons

Beginner 1

Students are able to participate in point play, but need to learn the basic fundamentals of technique on all strokes.

AGES: 18+ **LOCATION:** Platform Tennis

Activity #	Day	Date	Time	Res/Non-Res
P15001-1	Wed	1/8-3/12	9:30am-11am	\$310/\$370

Beginner 2

Students are learning to keep the ball in play, but need to work on basic court positioning and consistency.

AGES: 18+ **LOCATION:** Platform Tennis

Activity #	Day	Date	Time	Res/Non-Res
P15002-1	Wed	1/8-3/12	9:30am-11am	\$310/\$370

Intermediate

Students have swings that they can repeat, but lack variety or depth and struggle with keeping the ball in play when adding pace. More comfortable lobbing off the deck, but on occasion can make an easy screen shot.

AGES: 18+ **LOCATION:** Platform Tennis

Activity #	Day	Date	Time	Res/Non-Res
P15003-1	Wed	1/8-3/12	11am-12:30pm	\$310/\$370

Prime Time Paddle

Our Ladies Monday evening class will allow you the opportunity to learn and play this game in a class designed for all skill levels. We will focus on fundamental skills of the game and strategy.

AGES: 18+ **LOCATION:** Platform Tennis

Activity #	Day	Date	Time	Res/Non-Res
P15005-1	Mon	1/6-3/10	5pm-6pm	\$220/\$280
P15005-2	Mon	1/6-3/10	6pm-7pm	\$220/\$280

Men's Paddle Group Lessons

Men's Paddle Beginner 2

A great way to learn the game, meet new friends, and improve paddle skills.

AGES: 18+ **LOCATION:** Platform Tennis

Activity #	Day	Date	Time	Res/Non-Res
P15011-1	Mon	1/6-3/10	6pm-7pm	\$220/\$280

Men's Paddle Intermediate

A great way to learn the game, meet new friends and improve paddle skills.

AGES: 18+ **LOCATION:** Platform Tennis

Activity #	Day	Date	Time	Res/Non-Res
P15012-1	Mon	1/6-3/10	6pm-7pm	\$220/\$280

Co-Ed Paddle Group Lessons

Sunday Mixed Doubles

Looking to spend some quality time with your partner? Our mixed couples class is a great way to learn the finer points of the game while meeting other families for a session filled with instruction and open play time. Price is per couple.

AGES: 18+ **LOCATION:** Platform Tennis

Activity #	Day	Date	Time	Res/Non-Res
P15021-1	Sun	1/5-3/9	12:30pm-2pm	\$390/\$450

Paddle Open Adults

This beginner class is open to both men and women who have never played paddle or are interested in giving it another try.

AGES: 18+ **LOCATION:** Platform Tennis

Activity #	Day	Date	Time	Res/Non-Res
P15022-1	Sun	1/5-3/9	2pm-3:30pm	\$310/\$370
P15022-2	Fri	1/10-3/14	12:30pm-2pm	\$310/\$370

Advanced Position and Strategies

Focus is on building a stronger game. For intermediate/advanced players.

AGES: 18+ **LOCATION:** Platform Tennis

Activity #	Day	Date	Time	Res/Non-Res
P15004-1	Wed	1/8-3/12	11am-12:30pm	\$310/\$370
P15004-2	Fri	1/10-3/14	11am-12:30pm	\$310/\$370

Youth Group Lessons

Youth Paddle

You're never too young to learn this lifetime sport. This class will focus on building the basic fundamentals of technique. We will be working on balance, foot speed and agility in the beginning of every class, followed by stroke development and basic point building.

GRADE: 5-6 **LOCATION:** Platform Tennis

Activity #	Day	Date	Time	Res/Non-Res
P15032-2	Mon	1/6-3/10	4pm-5pm	\$220/\$280

GRADE: 7-8 **LOCATION:** Platform Tennis

Activity #	Day	Date	Time	Res/Non-Res
P15032-3	Mon	1/6-3/10	5pm-6pm	\$220/\$280



1300 Oak Street, Winnetka, IL 60093
(847) 501-2050 or (847) 501-2051

GENERAL MANAGER

Miles Tucker
mtucker@kempersports.com
(847) 501-2073

DIRECTOR OF AGRONOMY

Andrew Garner
agarner@kempersports.com
(847) 501-2056

GOLF PROFESSIONALS

Gary Beardman
gbeardman@kempersports.com
(847) 501-2079

Mike Samson
msamson@kempersports.com
(847) 501-2067

DISCOVERGOLF

Richard Franklin
rf@discovergolf.co
(520) 248-8760



Facility Info

18-Hole Course

Closed due to stormwater project + renovation.
Reopening on August 12, 2024.

Tee times are available 14-days in advance for Winnetka Residents beginning July 30. Tee times may be booked directly through winnetkagolfclub.org.

Par 3 (9-Hole) Course

Closed due to stormwater project + renovation.
Reopening on August 30, 2024.

Driving Range

Open Daily, Weather Permitting.
Call (847) 501-2050 for current hours.

Clubhouse + Golf Shop *When golf course is open.*

Open Daily, Sunrise - Sunset
Hours vary throughout the season. Call (847) 501-2050 for current hours.

DiscoverGolf Junior Golf Programs

The DiscoverGolf program is delivered by Richard Franklin, the founder of DiscoverGolf, a 15 year devotee to early childhood golf development programs, and is widely considered as one of the most innovative and knowledgeable professionals in all of junior golf. His programs, including DGWee, have been conducted at LPGA and Korn Ferry Tour events and have been featured on Golf Channel, NBC, Golf Digest, Golf Magazine, PGA.com, CDGA Magazine, Barons Magazine, and the Golfer's Journal.

Director Contact: Richard Franklin | rf@discovergolf.com | (520) 248-8760



Register at:

[https://www.winnetkagolfclub.org/
discovergolf-current-programming/](https://www.winnetkagolfclub.org/discovergolf-current-programming/)



Board Members

P.K. Wilson, Chair

Gina Gooden, Vice-Chair

Lyn Aleshire

Inna Olesnycky

Ex Officio Members

Shannon Nazzal

Jim Crocker

Alisa Kapusinski

James Hemmings

Jeff Tyson

Winnetka Parks Foundation

Who We Are

The Winnetka Parks Foundation (WPF) is an official 501(c)3 nonprofit organization, established in 1999 to enrich our village parks, beaches, recreational activities, and community events. In partnership with the Winnetka Park District and other entities, the WPF also coordinates and sponsors youth programming events to engage underserved communities, extending our outreach beyond the Village of Winnetka. Through generous donations from community members, the foundation has raised more than \$1M to help fund key Winnetka Park District projects and events.

Ways to Give

When you invest in the Winnetka Parks Foundation, you are investing in your community. The WPF is here to make it easy for you to get involved and give back to your parks and your community today at winnetkaparksfoundation.org.

Join the Foundation Board

Beyond generous donations, one of the most valuable gifts you can give is your time. We're always looking for new board members and volunteers, and would love to have you on our team. If you are interested in learning more about Winnetka Parks Foundation board opportunities, please reach out to Shannon Nazzal, Executive Director for the Winnetka Park District, at snazzal@winpark.org or (847) 501-2074.

Upcoming Foundation Events:

Family Skate

November 15 | 10-11:30am

\$10 per skater

Coming Soon!

Spring: Tennis Tournament

Visit www.winnetkaparksfoundation.org to register and stay up to date with the Winnetka Parks Foundation.

Beach + Launch Sales / Info
Phone: (847) 501-5040
Online: winpark.org
In-Person: 540 Hibbard Road

LAKEFRONT MANAGER

Matt Barton
mbarton@winpark.org
(847) 501-2045

DIRECTOR OF RECREATION + FACILITIES

Alisa Kapusinski
akapusinski@winpark.org
(847) 501-2072

RECREATION COORDINATOR

Debra Zarembski
dzarembski@winpark.org
(847) 501-2040

Our notification tool, **RainOut Line**, provides real-time updates on beach information, beach closures, no swimming conditions, and more. Sign up for text message or email alerts, or download the app to your smartphone.

Learn more at winpark.org/status-alerts.





Centennial Beach

225 Sheridan Road | (847) 501-2040

- » Dog water fountain
- » Dog water hose
- » Off-street parking
- » Swimming for dogs only

About

Centennial Dog Beach is an off-leash swimming beach located on Lake Michigan. It's the perfect place for your four-footed friend to get some exercise, go for a swim, or just have some fun. All patrons must have a valid pass to enter the dog beach

Dog Beach Passes

Season Pass Dates: April 1, 2024 - March 31, 2025

Park District staff reserve the right to shorten the season based on Centennial Beach construction requirements.

Season Pass	Res/Non-Res
First Dog	\$50/\$200*
Additional Dog	\$25/\$50
Replacement Card	\$20

*Fee includes a mandatory \$100 village parking pass.

Pass Requirements

- » Rabies tag number
- » Village tag number
- » Proof of current Bordetella, Distemper, Hepatitis, Parainfluenza, Parvovirus, and Leptospirosis

How to Purchase

Download a season pass application at winpark.org/passes and email it to wpdinfo@winpark.org.

Lloyd Beach

799 Sheridan Road | (847) 770-0824

- » Sailboat/Storage Launch
- » Wooded Natural Areas
- » Off-street parking
- » Restrooms and picnic tables

Winter Boat Storage - Indoor

STORAGE DATES: NOVEMBER 1, 2024 - APRIL 1, 2025

Indoor Storage for Sunfish, Lasers, Kayaks, Canoes, V-15, Paddle Boards. Keep your boats out of the winter weather by storing them inside Lloyd Beach House for the winter.

Activity #	Res/Non-Res
R50999-L	\$300

Maple Street Beach

725 Sheridan Road | (847) 770-0828

- » Beach house with restrooms
- » Off-street parking

Tower Road Beach

899 Sheridan Road | (847) 770-0823

- » Beach house with restrooms, showers, and vending machines
- » Sand volleyball courts and playground
- » Off-street parking

Elder Lane Beach

299 Sheridan Road | (847) 770-0829

Parties

Celebrate your next party with the Winnetka Park District! Our staff takes the stress out of your event with a full service party package so you can focus on creating memories with your child and their friends, and not on the party details.

To ensure your date is available, we recommend making your reservation at least three weeks in advance.

Youth Themed Parties*

Package includes:

- » An expert party coordinator to facilitate the party from start to finish
- » Access to the Skokie School gym and party room with tables/chairs
- » Drinks and themed tableware
- » Cake not included but can be added for additional fee (party coordinator will cut and serve cake, provide candles, + sing Happy Birthday)

- » Arts + Crafts
- » Dinosaurs
- » Knights + Princesses
- » Pirates
- » Sports + Games
- » Magic!
- » Superheroes
- » Hip Hop / Breakdancing

Have another idea? Contact us to see if we can accommodate your request. To view themes and fees, visit: winpark.org/parties-rentals.

Ages	Length(hrs)	Max	Fee*
3+	1.5	20	\$295-475

*based on theme

Book your themed birthday party by contacting Debbie Zarembski at (847) 501-2040.

Youth Tennis Parties

Package includes:

- » On-court activities (basic instruction + games)
- » Free use of loaner tennis racquets
- » One tennis instructor (up to eight children — additional instructors are \$50 each)
- » Access to one court for one hour and a post-party room (additional courts are \$30 each)

Ages	Length(hrs)	Mem/Non-Mem
5+	1/hr on court	\$200/250

Adult Tennis Parties

Package includes:

- » Exclusive access to two tennis courts for two hours (additional courts are \$30 each)
- » One tennis instructor (additional instructors are \$50)
- » Access to our lounge for 1.5 hours after tennis ends

Mem/Res	Non-Res
\$400	\$500

Book your tennis party by contacting Alexander Shubny at (847) 501-6135.

Parties on Ice

Public Skate Package Includes:

- » 15 admissions + skate rentals
- » 3 pizzas (cheese or pepperoni) + water or juice boxes

Available during Public Skate October-March 2-3:20pm

Private Skate Package:

- » A la carte options

Based on ice availability

Book your ice birthday party by contacting James Faedtke at (847) 501-2059 or jfaedtke@winpark.org.

Adult Platform Tennis Parties***

Package includes:

- » Exclusive access to the hut and six courts for four hours; 2 additional courts available for added fee
- » Free use of loaner paddles
- » Post party clean-up (extra clean-up will incur a \$125 fee)

WPTC Member	Res	Non-Res
\$350	\$400	\$500

Book your party by contacting Paul Schwartz at (847) 501-2062 or pschwartz@winpark.org.

*Themed Parties are not available June 15 - September 3 due to school construction.

*** Platform Tennis Parties cancelled at least 45 days from the event will receive a full refund. Parties cancelled 30 to 44 days will receive a 50 percent refund. Parties cancelled less than 30 days in advance will receive no refund and must be paid in full.

Facility + Shelter Rentals

Platform Tennis Hut 1300 OAK STREET

Our beautiful, rustic platform tennis hut is perfect for social gatherings and meetings. The hut can comfortably accommodate up to 50 people, and includes a TV, gas fireplace, full-size refrigerator, kitchen prep area, and a bar. Exclusive use of the platform tennis courts is included with hut rental.

FEES (FOUR HOUR RENTAL):

WPTC Members	Residents	Non-Residents	Holidays
\$350	\$400	\$500	\$550

Book the Platform Tennis Hut by contacting the Ice Arena at (847) 501-2060.

Tennis Shack + Tennis Lounge 530 HIBBARD ROAD

Our Tennis Lounge and Tennis Shack are perfect for small gatherings or as meeting spaces. Amenities include a kitchen area, flat screen tv with slideshow/video capabilities, and seating for up to 30 people.

TENNIS SHACK FEES (TWO HOUR RENTAL):

A.C. Nielsen Member	Residents	Non-Residents
\$75	\$100	\$125

TENNIS LOUNGE FEES (TWO HOUR RENTAL):

A.C. Nielsen Member	Residents	Non-Residents
\$150	\$200	\$300

Book the Tennis Shack or Lounge by contacting Pat Fragassi, Tennis Manager at (847) 501-2066.

Community Room 540 HIBBARD ROAD

The Community Room is available for meetings or small gatherings and can accommodate up to 40 people. Free wi-fi is available. The community room cannot be used for parties.

FEES (ONE HOUR MINIMUM):

Residents	Non-Residents
\$35	\$55

Book the Community Room by contacting Debbie Zarembski at (847) 501-2040.

Indian Hill Park Shelter 131 WILSON STREET

Indian Hill Park's enclosed shelter is equipped with restrooms, a party room, and fireplace. Rental includes 20 chairs and two tables. Availability is limited December through February.

FEES (FOUR HOUR MINIMUM):

Residents	Non-Residents
\$25	\$50

Book the Indian Hill Park Shelter by contacting Debbie Zarembski at (847) 501-2040.

Crow Island Woods Shelter* 1140 WILLOW ROAD

Crow Island Wood's picnic shelter is equipped with restrooms and lies adjacent to a large field and parking lot. Rental includes four picnic tables.

FEES (FOUR HOUR MINIMUM):

Residents	Non-Residents
\$25	\$50

Book the Crow Island Woods Shelter by contacting Debbie Zarembski at (847) 501-2040.



Lloyd Beach + Beach House

799 SHERIDAN ROAD

Lloyd Beach + Beach House is great for birthday parties and small social gatherings. Beach house is equipped with restrooms, party room, and parking. Rental includes two tables and 20 chairs. There is no swimming at Lloyd Beach, but paddleboard and kayak rentals are available for an additional fee.

Beach House Rentals are available from May 1 through October 15.

FEES (THREE HOUR MINIMUM):

Residents	Non-Residents
\$100	\$150

Maple Street Beach House

725 SHERIDAN ROAD

Maple Street Beach House is equipped with restrooms, a party room, and off-street parking. Rental includes six tables and 50 chairs. Access to the swimming beach is available with rental fee, when the beach is open.

Beach House Rentals are available from May 15 through October 15.

FEES (THREE HOUR MINIMUM):

Residents	Non-Residents
\$100	\$150

Book the Lloyd Beach or Maple Street Beach Houses by contacting Debbie Zarembski at (847) 501-2040.

Parks + Amenities

The Winnetka Park District operates and maintains a total of 26 parks which encompasses over 242 acres. A balance of active and passive parks provides our residents and visitors with a unique experience at every park. Take time to enjoy the open space available through the Winnetka Park District.

Parks without Playgrounds

Park	Address	Acres	Basketball Courts	Bike Racks	Bocce Ball Courts	Corn Hole / Bean Bag Toss	Leashed Dogs Allowed	Outdoor Ice Skating	Lake Frontage	Parking Spaces	Pier Fishing	Ping Pong Tables	Restrooms	Sailboat Storage/Launch	Shelter	Splash Pad Sprayground	Swimming Beaches	Wooded Natural Areas
Arborvitae Park	713 Elm Street	.09					•											
Bell Woods	1380 Tower Road	2.57					•											•
Centennial Park / Beach	225 Sheridan Road	5.22		1			•		•	11								
Crow Island Woods	11140 Willow Road	17.91					•			7					•			•
Franklin Dunbaugh Park	1035 Hubbard Place	1.42					•											•
Green Bay Trail	400 Maple Street	9.38		1														
Hill Road Park	240 Green Bay Road	.30					•			9								
Lloyd Park / Boat Launch	799 Sheridan Road	9.53							•	64			•	252				•
Maple Street Park / Beach	725 Sheridan Road	3.00		1					•	14	•		•				•	
Merrill Park	1101 Merrill Street	.13					•											
Robert E. Burke Memorial Park	265 Church Road	.23					•											
Sheridan Park	720 Sheridan Road	1.20					•											
Station Park	754 Elm Street	.83					•			40								
West Elm Street Park	1155 Elm Street	3.74					•											



Parks with Playgrounds			Basketball Courts	Bike Racks	Bocce Ball Courts	Corn Hole / Bean Bag Toss	Leashed Dogs Allowed	Outdoor Ice Skating	Lake Frontage	Parking Spaces	Pier Fishing	Ping Pong Tables	Restrooms	Sailboat Storage/Launch	Shelter	Splash Pad Sprayground	Swimming Beaches	Wooded Natural Areas
Park	Address	Acres																
Dwyer Park	521 Birch Street	1.23		3		•						•			•			
Elder Lane Park / Beach	299 Sheridan Road	4.56		1					•	70	•		•				•	
Glencoe Park	156 Glenwood Avenue, Glencoe	.39																
Happ Road Park	1722 Holder Lane, Northfield	.38	1	2														
Hubbard Woods Park	939 Green Bay Road	1.38		3	•			•		10			•		•	•		
Indian Hill Park	131 Wilson Street	3.36		2				•					•		•			
Nick Corwin Park	1550 Edgewood Lane	6.05		2						29			•					
Northfield Park	240 Lockwood Avenue, Northfield	1.99	1	1				•		3								
Skokie Playfield	540 Hibbard Road	162.01		2				•		366			•					
Tower Road Park / Beach	899 Sheridan Road	3.75		3					•	52	•		•		•		•	
Village Green	525 Maple Street	3.34																

Park Map



DICK'S Sporting Goods Coupons

Our partner, DICK'S Sporting Goods, is offering you discounts on athletic wear and equipment throughout the store to help you maintain your active lifestyle all year-round. These offers include:

- » Take \$10 off a pair of athletic footwear or cleats \$59.99 or more
- » Take 15% off an athletic or outdoor apparel item
- » Take 10% off a single team sports equipment item

These coupons are valid in-store February 1, 2024 – January 31, 2025 at any DICK'S Sporting Goods location.



Download your coupons!

To download your DICK'S Sporting Goods coupons, visit winpark.org/coupons.

Business Sponsorship Program

The Winnetka Park District is a public organization responsible for providing parks, recreation facilities, and programming to the community. With more than 15,000 residents attending our events each year, partnering with us is an excellent opportunity for you to increase visibility and align your business with a positive brand in the community.

The Benefits

- » Connect with new consumers that align with your target market(s)
- » Reinforce relationships + evoke positive feelings from customers
- » Increase visibility in the community
- » Enhance your business' credibility
- » Create momentum on social media outlets
- » Develop an opportunity to be named in the local media

Save When You Bundle

Discounts for bundling events are available. Based on your business' marketing goals and budget, we will work with you to develop a customized plan tailored to your needs.

Contact

Winnetka Park District |
540 Hibbard Road Winnetka, IL 60093 | (847) 501-2040

Exposure

25,000+

monthly website visitors

24,000+

average views of our seasonal program guide

17,500+

active email database

15,000+

unique members of the local community at our special events annually

9,400+

social media followers

NSSRA

Winnetka Park District and partner communities work with Northern Suburban Special Recreation Association (NSSRA), which provides stand-alone recreation, sport, cultural and social programming for children, teens, and adults with disabilities.

Reasons to Request Inclusion

Support

NSSRA recognizes that some individuals with disabilities would benefit from social opportunities by participating in programs offered through Winnetka Park District.

NSSRA's inclusion services provide a choice for individuals of varying abilities to experience Winnetka Park District's Programs. Inclusion support may come in one or more of the following: Observations, Visual Supports, Behavior Management Support, Activity Modifications, Varying Levels of Staff Support, Disability Awareness Training, Adaptive Equipment, or an Inclusion Companion.

NSSRA and Winnetka Park District staff work closely with the participant and family to provide enriching recreational experiences while maintaining safety and confidentiality and providing the appropriate support to promote independence and growth in the least restrictive environment.

Requesting Inclusion Services

For information on Inclusion services or to make arrangements for accommodation, contact the Park District's NSSRA Inclusion Liaison, Toby Ross, at (847) 501-2071 or tross@winpark.org.



Programs + Camps

To view NSSRA's youth + adult programs, events, and camps, please visit nssra.org/program-guides/.

Learn More

Mitchel L. Slotnick Center / NSSRA

1221 County Line Road • Highland Park, IL 60035
(847) 509-9400 • www.nssra.org • info@NSSRA.org



winnetkaparks



winnetkaparks



winnetkaparks